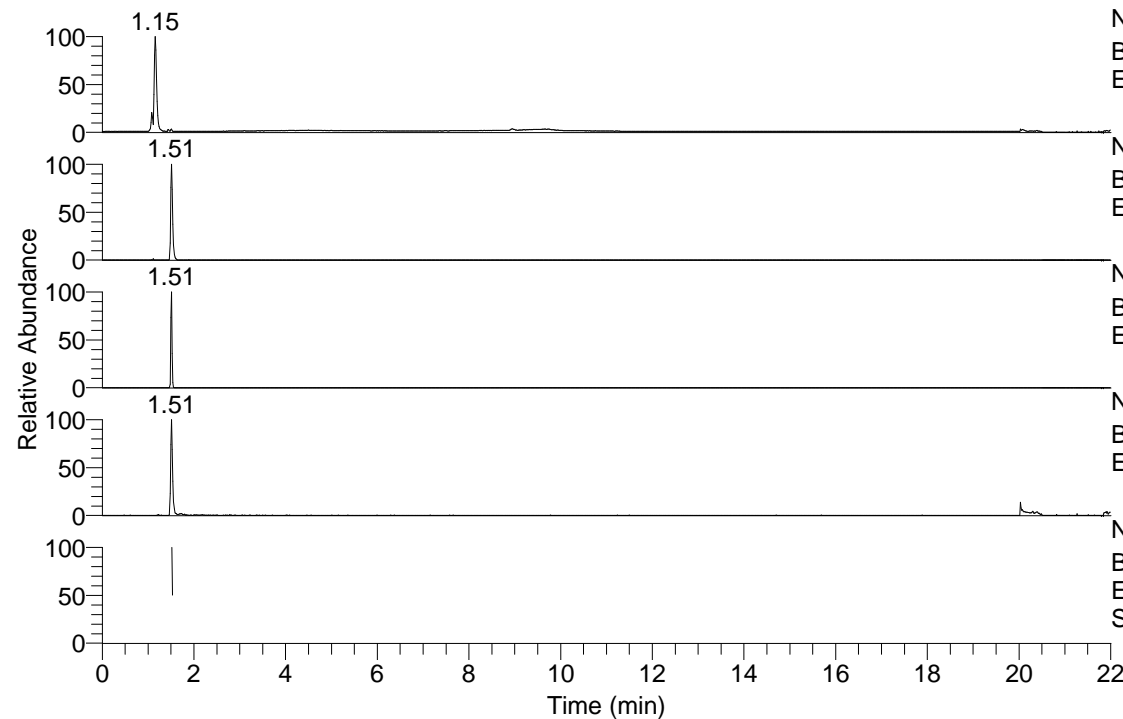


RT: 0.00 - 22.00



NL: 5.19E7
 Base Peak m/z= 50.00000-1500.00000 F: FTMS + p
 ESI Full ms [100.00-1500.00] MS Stegodyphussp4

NL: 5.26E5
 Base Peak m/z= 244.09213-244.09457 F: FTMS + p
 ESI Full ms [100.00-1500.00] MS Stegodyphussp4

NL: 2.22E5
 Base Peak m/z= 487.17643-487.18131 F: FTMS + p
 ESI Full ms [100.00-1500.00] MS Stegodyphussp4

NL: 4.14E5
 Base Peak m/z= 112.05053-112.05165 F: FTMS + p
 ESI Full ms [100.00-1500.00] MS Stegodyphussp4

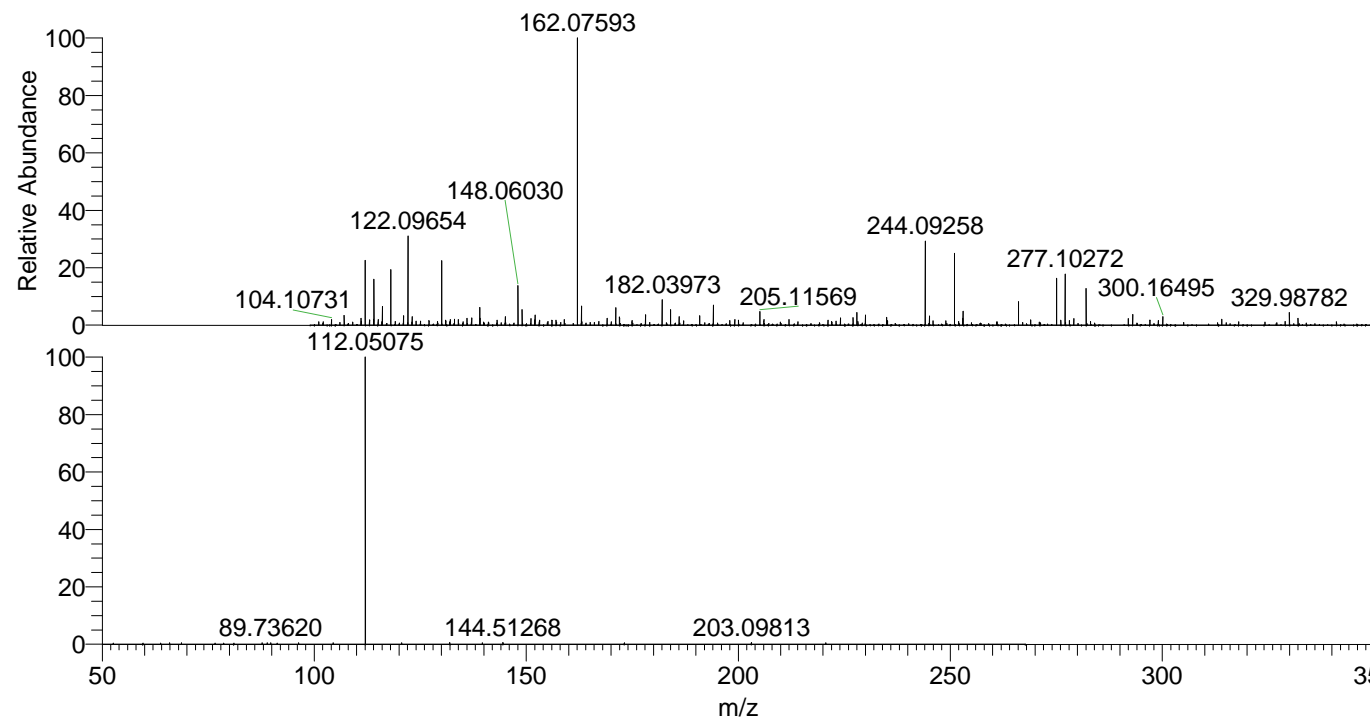
NL: 3.78E5
 Base Peak m/z= 50.00000-1500.00000 F: FTMS + p
 ESI d Full ms2 244.09@hcd35.00 [50.00-265.00] MS
 Stegodyphussp4

Stegodyphussp4#604-611 RT: 1.52-1.54

F: FTMS + p ESI d Full ms2 244.09 ...

m/z= 50.00000-1000.00000

m/z	Intensity	Relative
87.70313	1391.4	0.50
89.73620	1546.3	0.56
104.49108	1434.3	0.52
112.05075	277682.2	100.00
120.62625	1405.7	0.51
131.97482	1677.4	0.60
139.62955	1487.6	0.54
144.51268	1755.0	0.63
173.12894	1490.3	0.54
203.09813	1606.5	0.58



NL: 1.74E6
 Stegodyphussp4#601 RT:
 1.51 AV: 1 T: FTMS + p
 ESI Full lock ms
 [100.00-1500.00]

NL: 2.77E5
 Stegodyphussp4#520-703
 RT: 1.52-1.54 AV: 2 F:
 FTMS + p ESI d Full ms2
 244.09@hcd35.00
 [50.00-265.00]