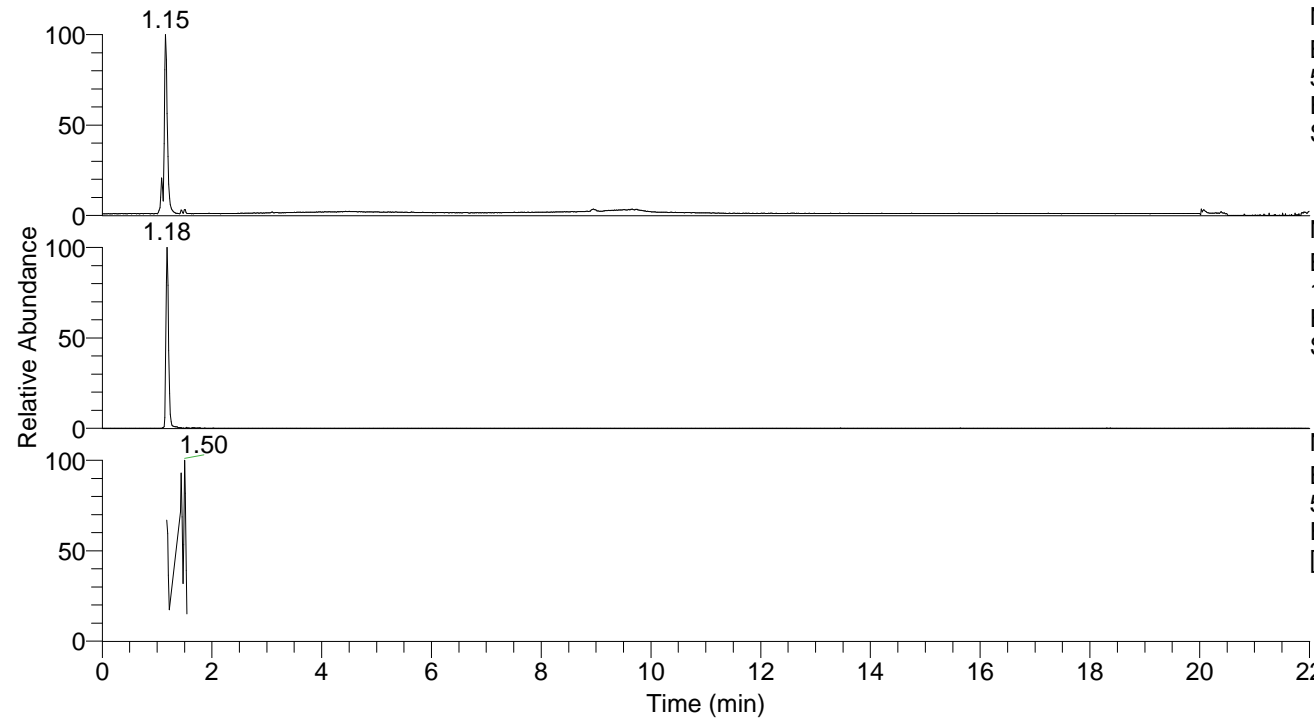


RT: 0.00 - 22.00



NL: 5.19E7
Base Peak m/z=
50.00000-1500.00000 F: FTMS + p
ESI Full ms [100.00-1500.00] MS
Stegodyphussp4

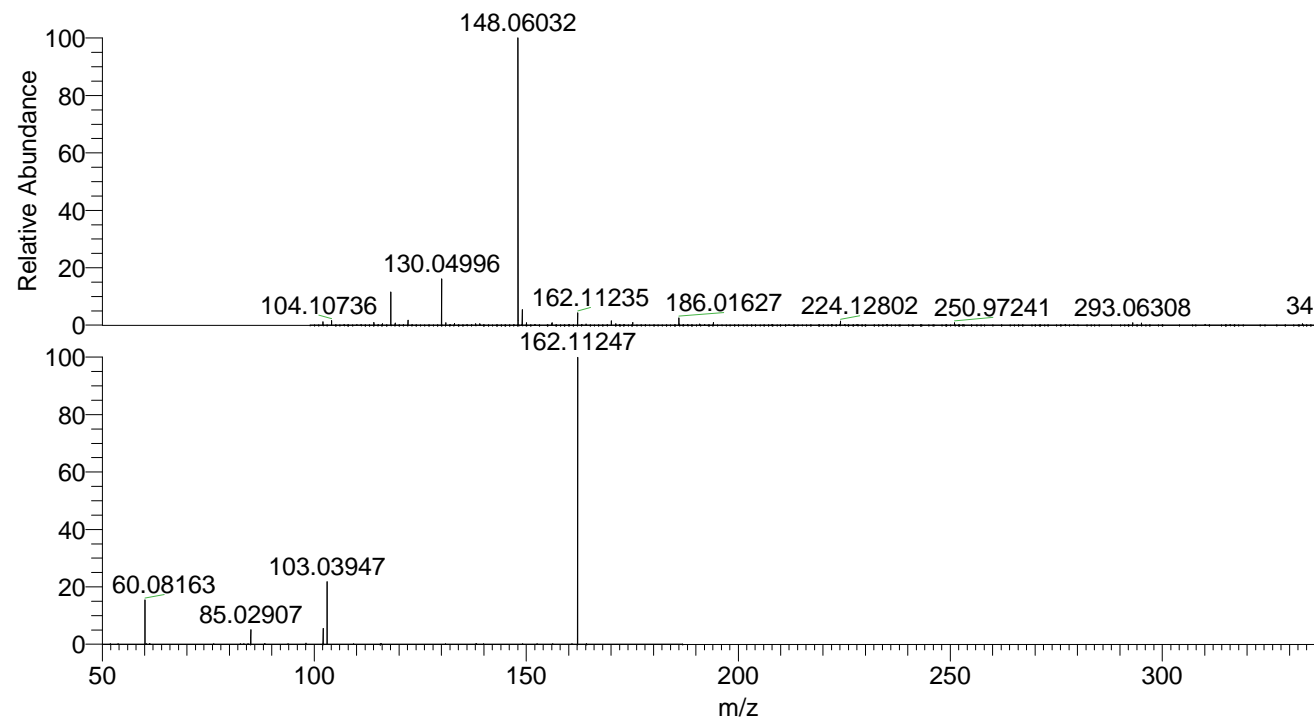
NL: 1.35E6
Base Peak m/z=
162.11221-162.11383 F: FTMS + p
ESI Full ms [100.00-1500.00] MS
Stegodyphussp4

NL: 9.27E5
Base Peak m/z=
50.00000-1500.00000 F: FTMS + p
ESI d Full ms2 162.08@hcd35.00
[50.00-185.00] MS Stegodyphussp4

Stegodyphussp4#467-485 RT: 1.18-1.22

F: FTMS + p ESI d Full ms2 162.08 ...
m/z= 50.00000-1000.00000

m/z	Intensity	Relative
60.08163	59102.7	15.14
85.02906	19279.6	4.94
102.05540	3439.4	0.88
102.09177	21839.1	5.60
103.03946	85120.4	21.81
162.11246	390254.3	100.00



NL: 2.92E7
Stegodyphussp4#469 RT:
1.18 AV: 1 T: FTMS + p
ESI Full lock ms
[100.00-1500.00]

NL: 4.53E5
Stegodyphussp4#458-482
RT: 1.18-1.21 AV: 3 F:
FTMS + p ESI d Full ms2
162.08@hcd35.00
[50.00-185.00]