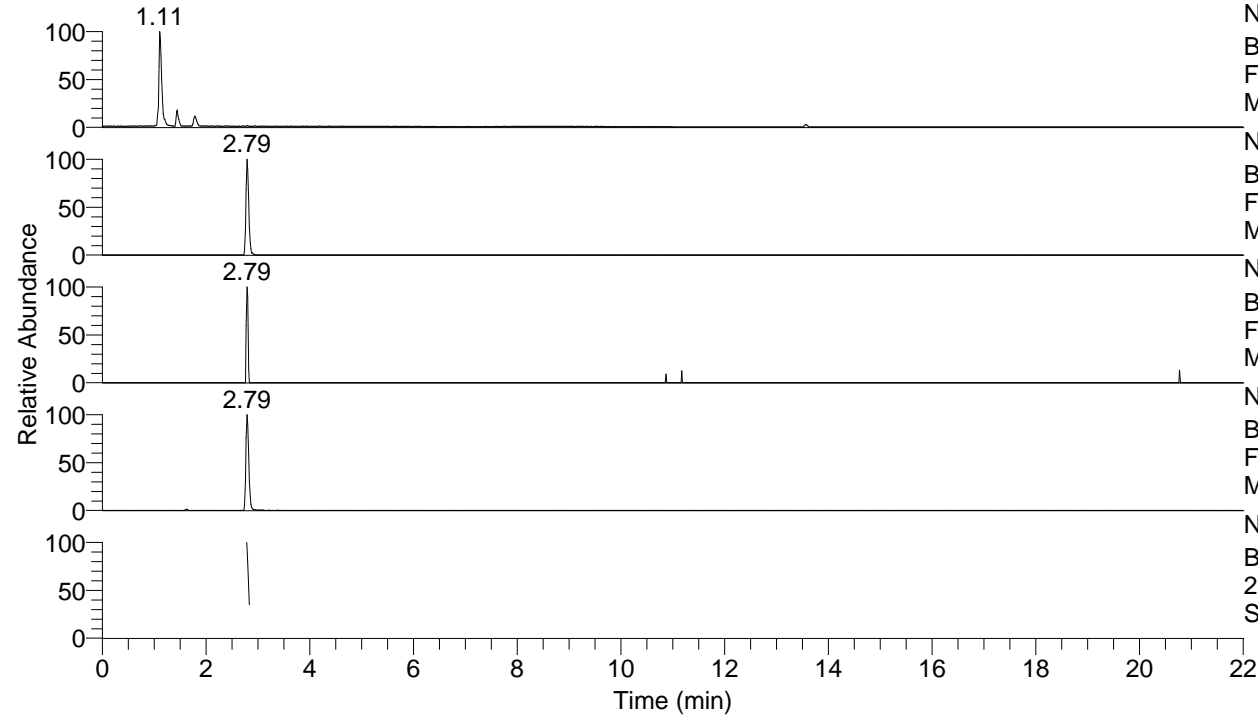


RT: 0.00 - 22.01



NL: 6.52E7
Base Peak m/z= 50.00000-1500.00000 F:
FTMS + p ESI Full ms [100.00-1500.00]
MS Sgrossa

NL: 4.57E5
Base Peak m/z= 269.08590-269.09128 F:
FTMS + p ESI Full ms [100.00-1500.00]
MS Sgrossa

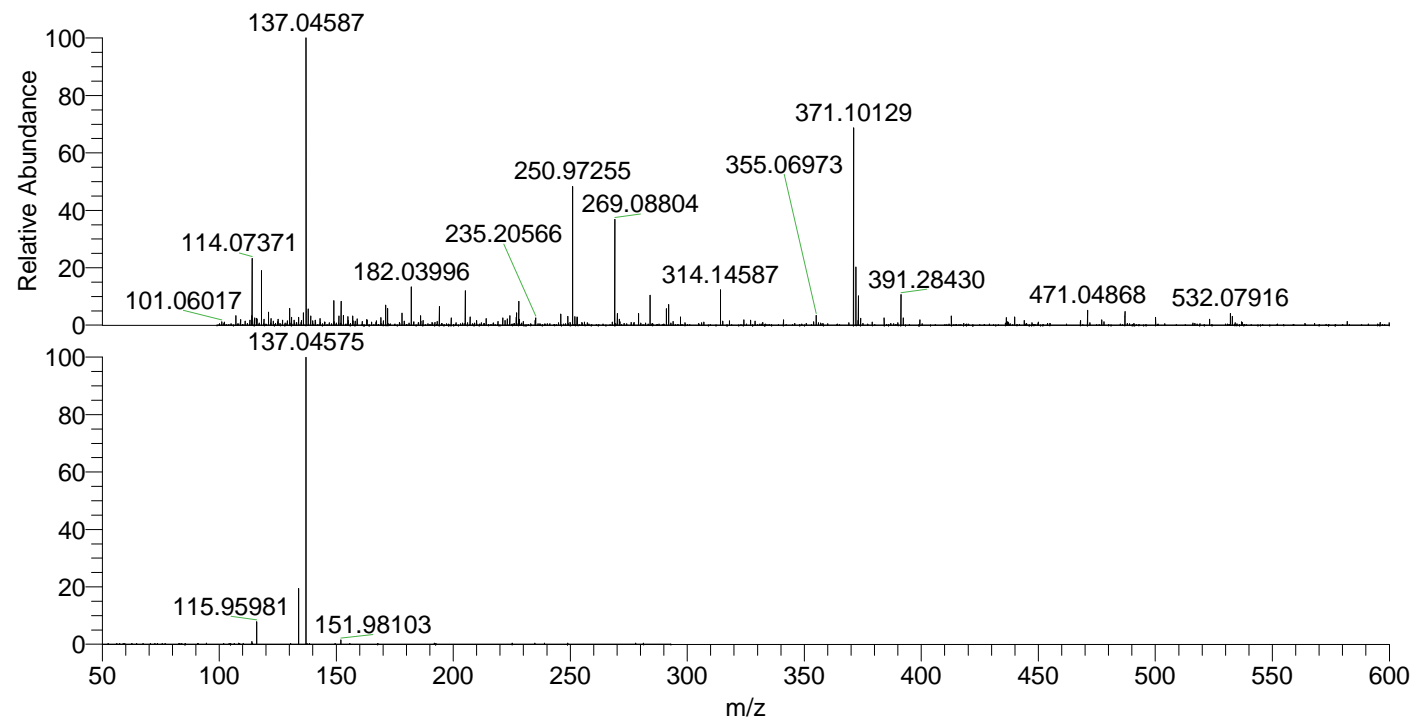
NL: 1.14E4
Base Peak m/z= 537.16399-537.17473 F:
FTMS + p ESI Full ms [100.00-1500.00]
MS Sgrossa

NL: 1.18E6
Base Peak m/z= 137.04497-137.04771 F:
FTMS + p ESI Full ms [100.00-1500.00]
MS Sgrossa

NL: 3.51E5
Base Peak F: FTMS + p ESI d Full ms2
269.09@hcd35.00 [50.00-290.00] MS
Sgrossa

Sgrossa#1110-1128 RT: 2.79-2.83 AV: 4
F: FTMS + p ESI d Full ms2 269.09 ...
m/z= 50.00000-1000.00000

m/z	Intensity	Relative
113.96423	2159.2	0.94
115.95981	18185.9	7.89
133.96988	45823.6	19.88
137.04575	230480.3	100.00
151.98103	3672.7	1.59



NL: 1.18E6
Sgrossa#1111 RT: 2.79
AV: 1 T: FTMS + p ESI
Full lock ms
[100.00-1500.00]

NL: 2.30E5
Sgrossa#1055-1146 RT:
2.79-2.83 AV: 4 F: FTMS
+ p ESI d Full ms2
269.09@hcd35.00
[50.00-290.00]