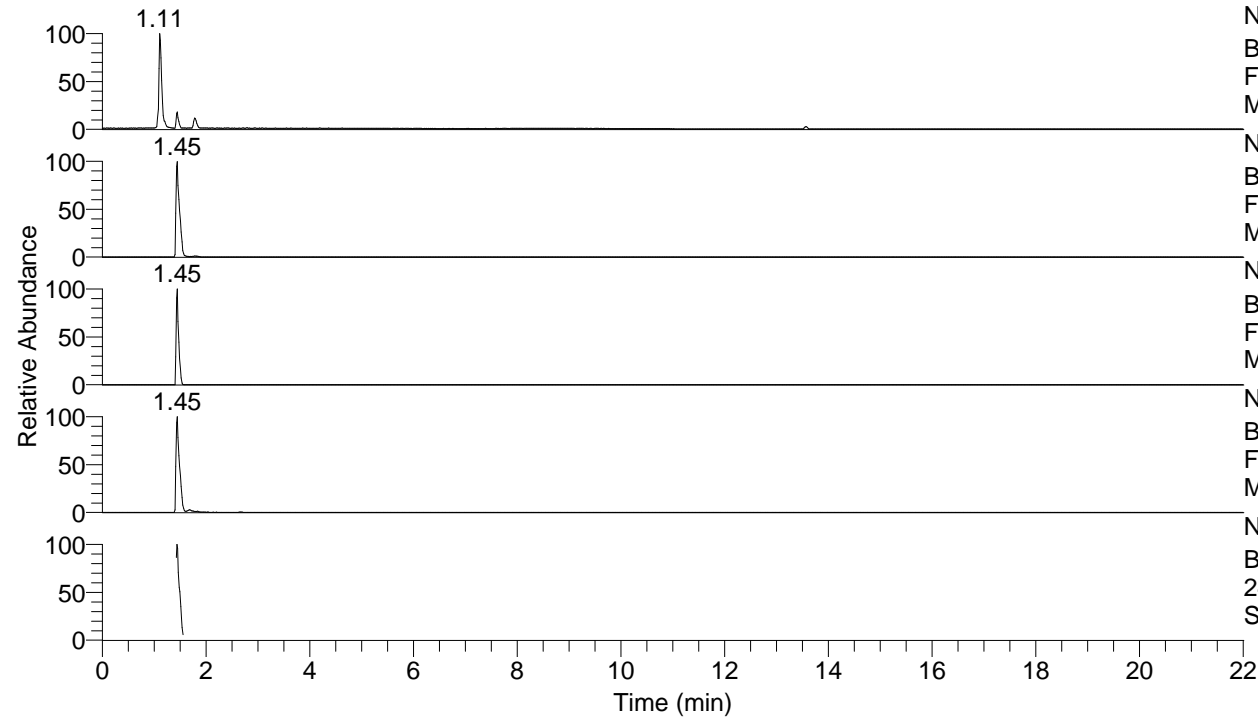


RT: 0.00 - 22.01



NL: 6.52E7
Base Peak m/z= 50.00000-1500.00000 F:
FTMS + p ESI Full ms [100.00-1500.00]
MS Sgrossa

NL: 3.77E6
Base Peak m/z= 244.09090-244.09578 F:
FTMS + p ESI Full ms [100.00-1500.00]
MS Sgrossa

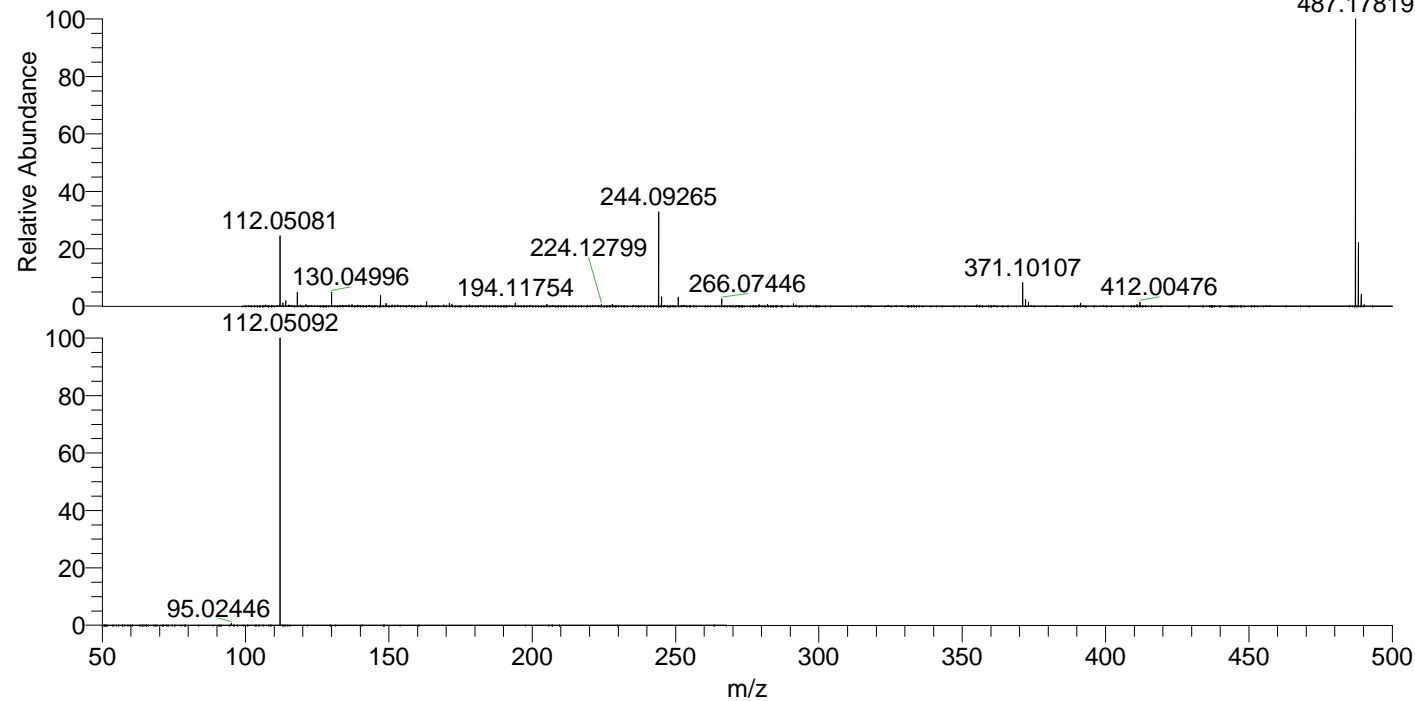
NL: 1.19E7
Base Peak m/z= 487.17400-487.18374 F:
FTMS + p ESI Full ms [100.00-1500.00]
MS Sgrossa

NL: 2.89E6
Base Peak m/z= 112.04997-112.05221 F:
FTMS + p ESI Full ms [100.00-1500.00]
MS Sgrossa

NL: 2.57E6
Base Peak F: FTMS + p ESI d Full ms2
244.09@hcd35.00 [50.00-265.00] MS
Sgrossa

Sgrossa#569-621 RT: 1.43-1.56 AV: 10
F: FTMS + p ESI d Full ms2 244.09@h ...
m/z= 50.00000-1000.00000

m/z	Intensity	Relative
95.02446	8399.1	0.64
112.05092	1318285.5	100.00



NL: 1.12E7
Sgrossa#577 RT: 1.45
AV: 1 T: FTMS + p ESI
Full lock ms
[100.00-1500.00]

NL: 1.28E6
Sgrossa#526-630 RT:
1.43-1.56 AV: 10 F:
FTMS + p ESI d Full ms2
244.09@hcd35.00
[50.00-265.00]