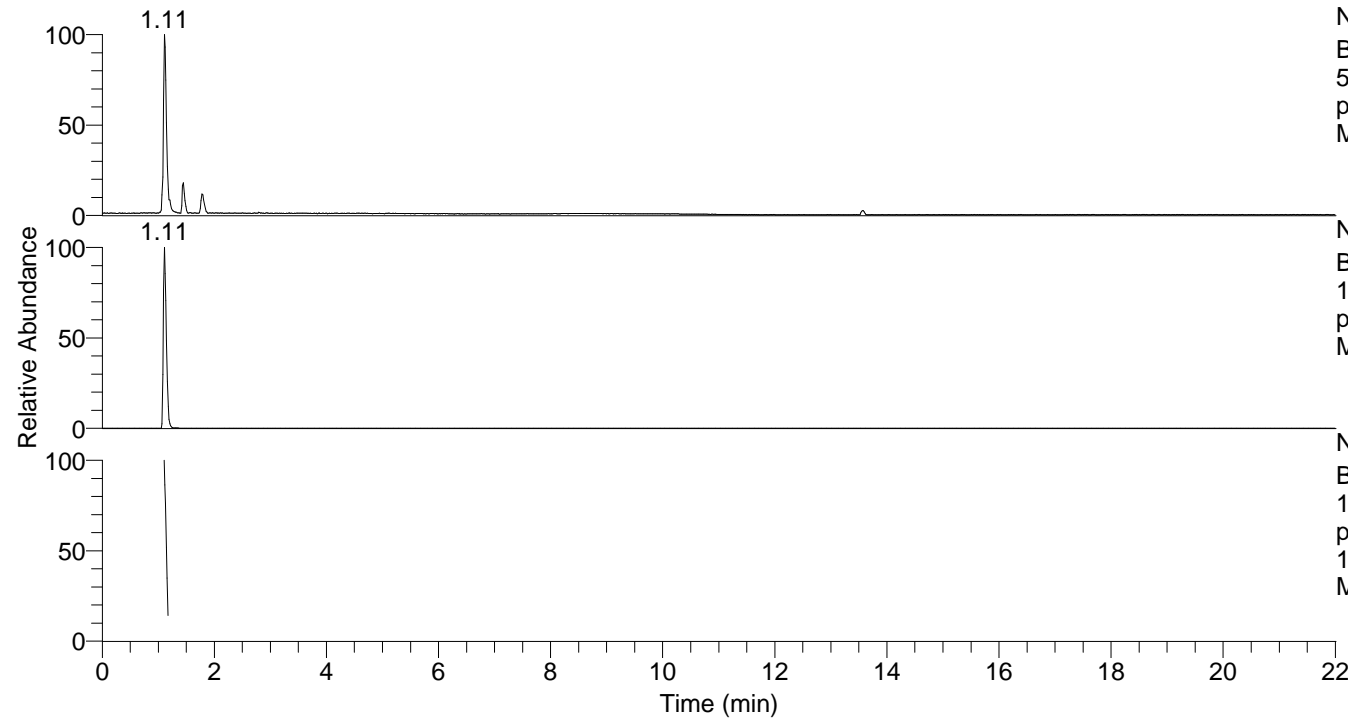


RT: 0.00 - 22.01



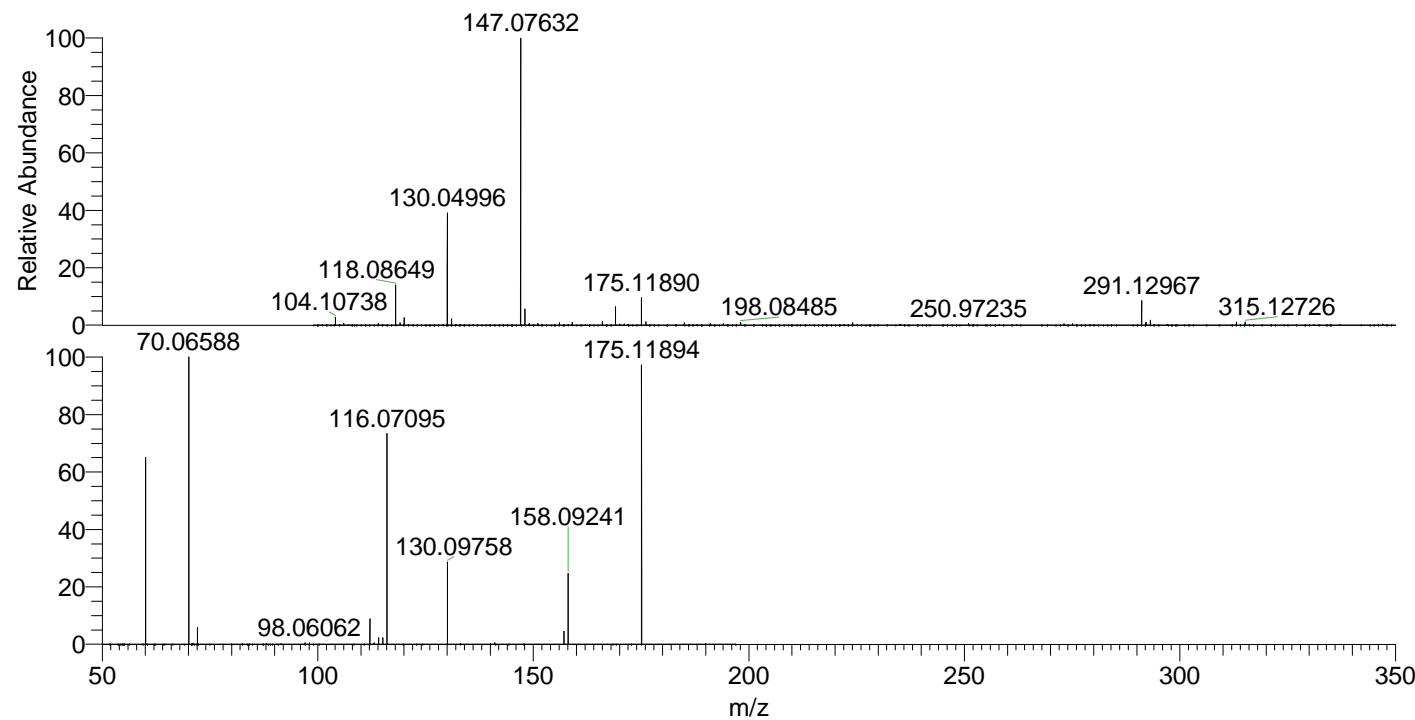
NL: 6.52E7
Base Peak m/z=
50.00000-1500.00000 F: FTMS +
p ESI Full ms [100.00-1500.00]
MS Sgrossa

NL: 6.52E6
Base Peak m/z=
175.11775-175.12125 F: FTMS +
p ESI Full ms [100.00-1500.00]
MS Sgrossa

NL: 9.78E5
Base Peak m/z=
175.11775-175.12125 F: FTMS +
p ESI d Full ms2
175.12@hcd35.00 [50.00-195.00]
MS Sgrossa

Sgrossa#438-468 RT: 1.11-1.17 AV: 6
F: FTMS + p ESI d Full ms2 175.12 ...
m/z= 50.00000-1000.00000

m/z	Intensity	Relative
60.05647	366822.8	64.70
70.06588	566939.4	100.00
72.08154	33578.4	5.92
98.06062	3073.7	0.54
112.08731	51892.5	9.15
114.10285	12654.0	2.23
115.08690	13059.4	2.30
116.07095	425818.9	75.11
130.09758	165634.3	29.22
157.10838	25443.0	4.49
158.09241	144280.6	25.45
175.11894	551931.7	97.35



NL: 3.26E7
Sgrossa#457 RT: 1.15
AV: 1 T: FTMS + p ESI
Full lock ms
[100.00-1500.00]

NL: 5.62E5
Sgrossa#335-578 RT:
1.11-1.17 AV: 6 F:
FTMS + p ESI d Full ms2
175.12@hcd35.00
[50.00-195.00]