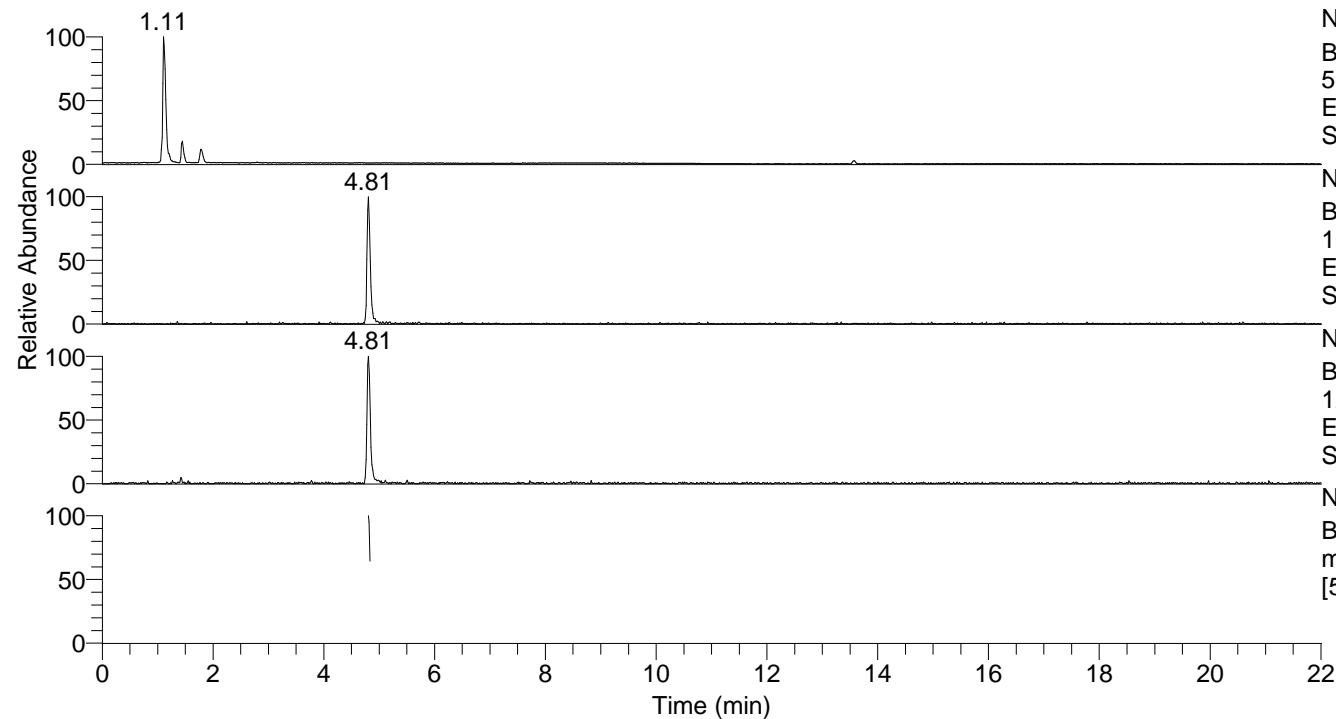


RT: 0.00 - 22.01



NL: 6.52E7  
Base Peak m/z=  
50.00000-1500.00000 F: FTMS + p  
ESI Full ms [100.00-1500.00] MS  
Sgrossa

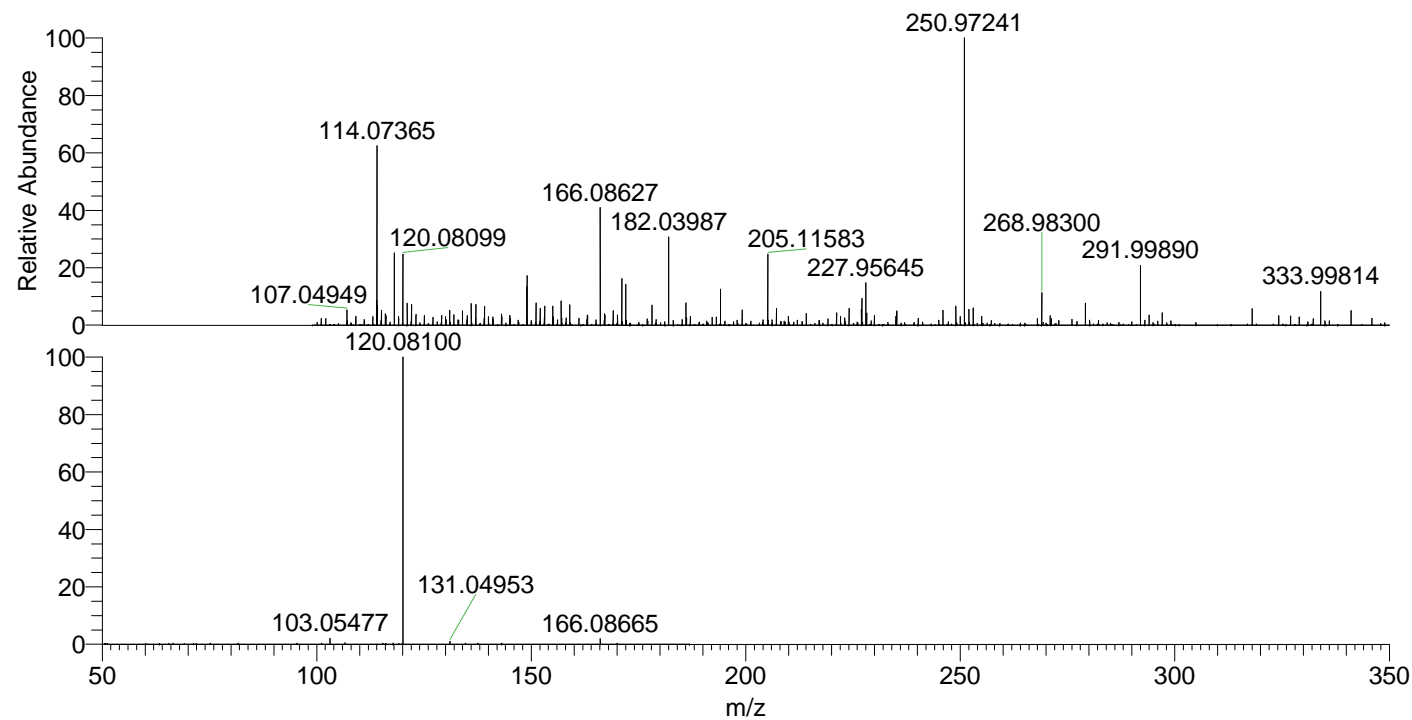
NL: 2.61E5  
Base Peak m/z=  
166.08597-166.08763 F: FTMS + p  
ESI Full ms [100.00-1500.00] MS  
Sgrossa

NL: 1.55E5  
Base Peak m/z=  
120.08072-120.08192 F: FTMS + p  
ESI Full ms [100.00-1500.00] MS  
Sgrossa

NL: 2.73E5  
Base Peak F: FTMS + p ESI d Full  
ms2 166.09@hcd35.00  
[50.00-185.00] MS Sgrossa

Sgrossa#1908-1920 RT: 4.80-4.83 AV: 3  
F: FTMS + p ESI d Full ms2 166.09 ...  
m/z= 50.00000-1000.00000

m/z	Intensity	Relative
103.05477	4539.2	2.03
120.08100	223542.9	100.00
131.04953	2280.3	1.02
166.08665	4347.9	1.95



NL: 6.05E5  
Sgrossa#1909 RT: 4.81  
AV: 1 T: FTMS + p ESI  
Full lock ms  
[100.00-1500.00]

NL: 2.21E5  
Sgrossa#1878-1962 RT:  
4.80-4.83 AV: 3 F: FTMS  
+ p ESI d Full ms2  
166.09@hcd35.00  
[50.00-185.00]