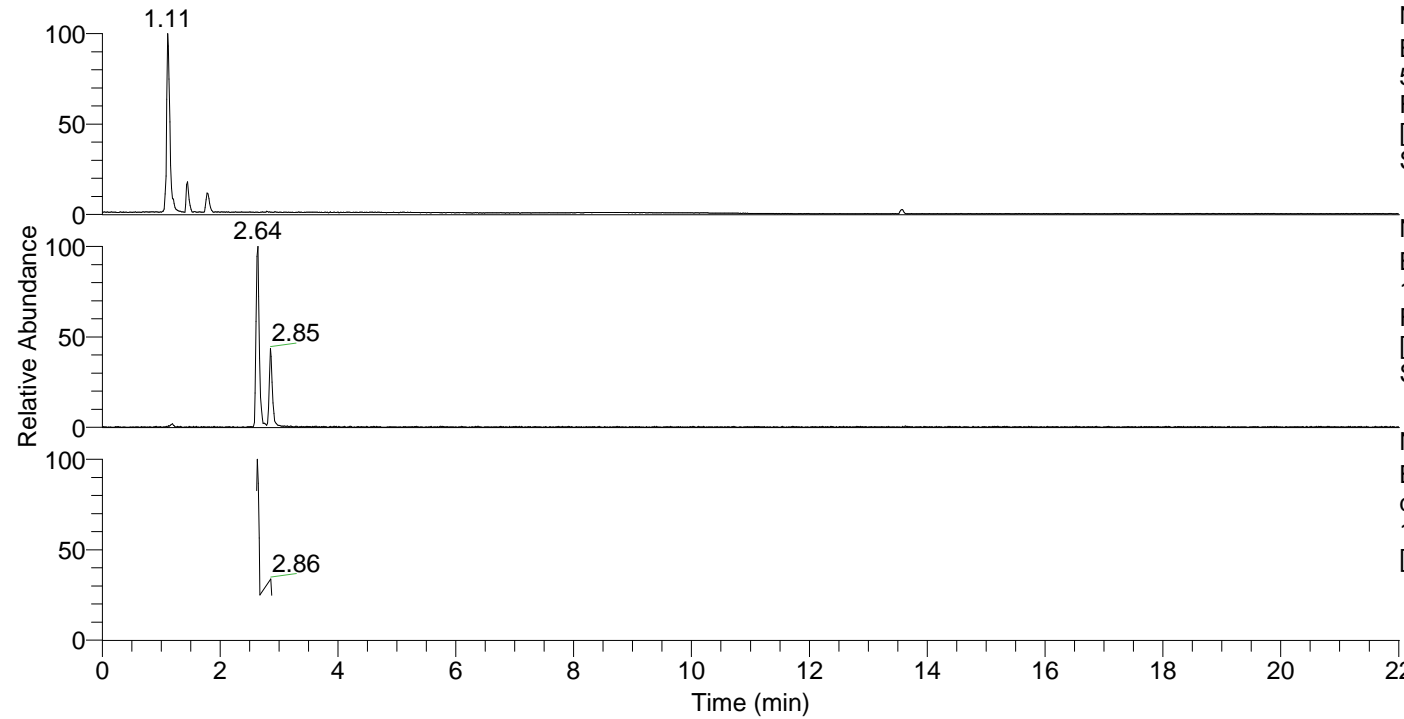


RT: 0.00 - 22.01



NL: 6.52E7
Base Peak m/z=
50.00000-1500.00000 F:
FTMS + p ESI Full ms
[100.00-1500.00] MS
Sgrossa

NL: 7.93E5
Base Peak m/z=
132.10113-132.10377 F:
FTMS + p ESI Full ms
[100.00-1500.00] MS
Sgrossa

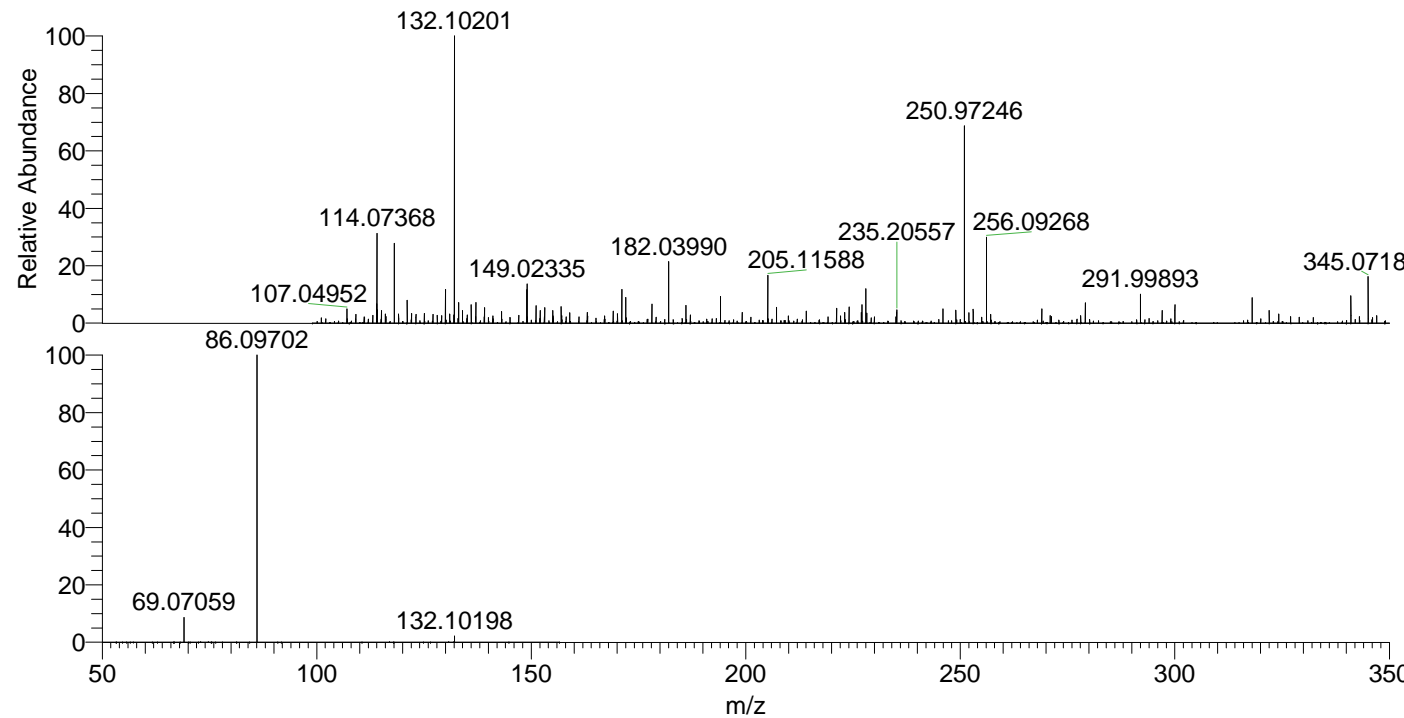
NL: 6.49E5
Base Peak F: FTMS + p ESI
d Full ms2
132.10@hcd35.00
[50.00-155.00] MS Sgrossa

Sgrossa#1043-1065 RT: 2.62-2.68 AV: 5

F: FTMS + p ESI d Full ms2 132.10 ...

m/z = 50.00000-1000.00000

| m/z | Intensity | Relative |
|-----------|-----------|----------|
| 69.07059 | 36938.6 | 8.51 |
| 86.09702 | 434263.9 | 100.00 |
| 132.10198 | 9276.6 | 2.14 |



NL: 7.73E5
Sgrossa#1051 RT: 2.64
AV: 1 T: FTMS + p ESI
Full lock ms
[100.00-1500.00]

NL: 4.25E5
Sgrossa#1009-1072 RT:
2.62-2.68 AV: 5 F: FTMS
+ p ESI d Full ms2
132.10@hcd35.00
[50.00-155.00]