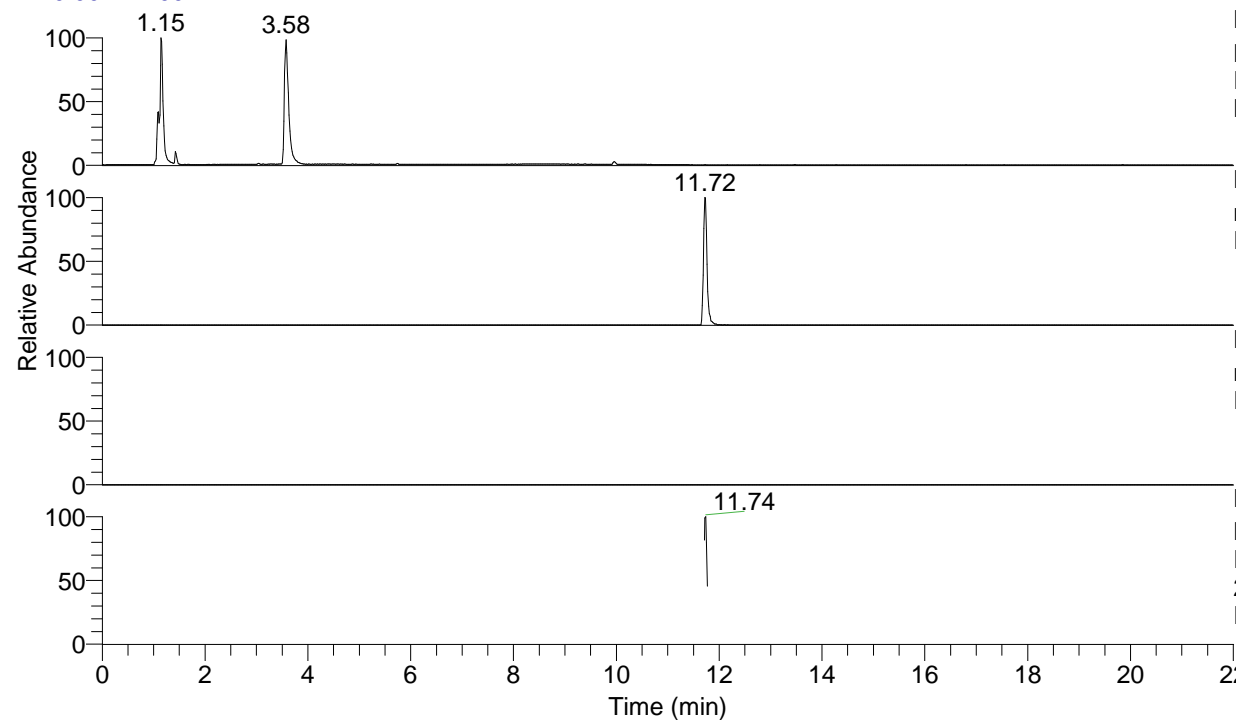


RT: 0.00 - 22.00



NL: 6.97E7
 Base Peak m/z= 50.00000-1500.00000 F:
 FTMS + p ESI Full ms [100.00-1500.00]
 MS Pviridans

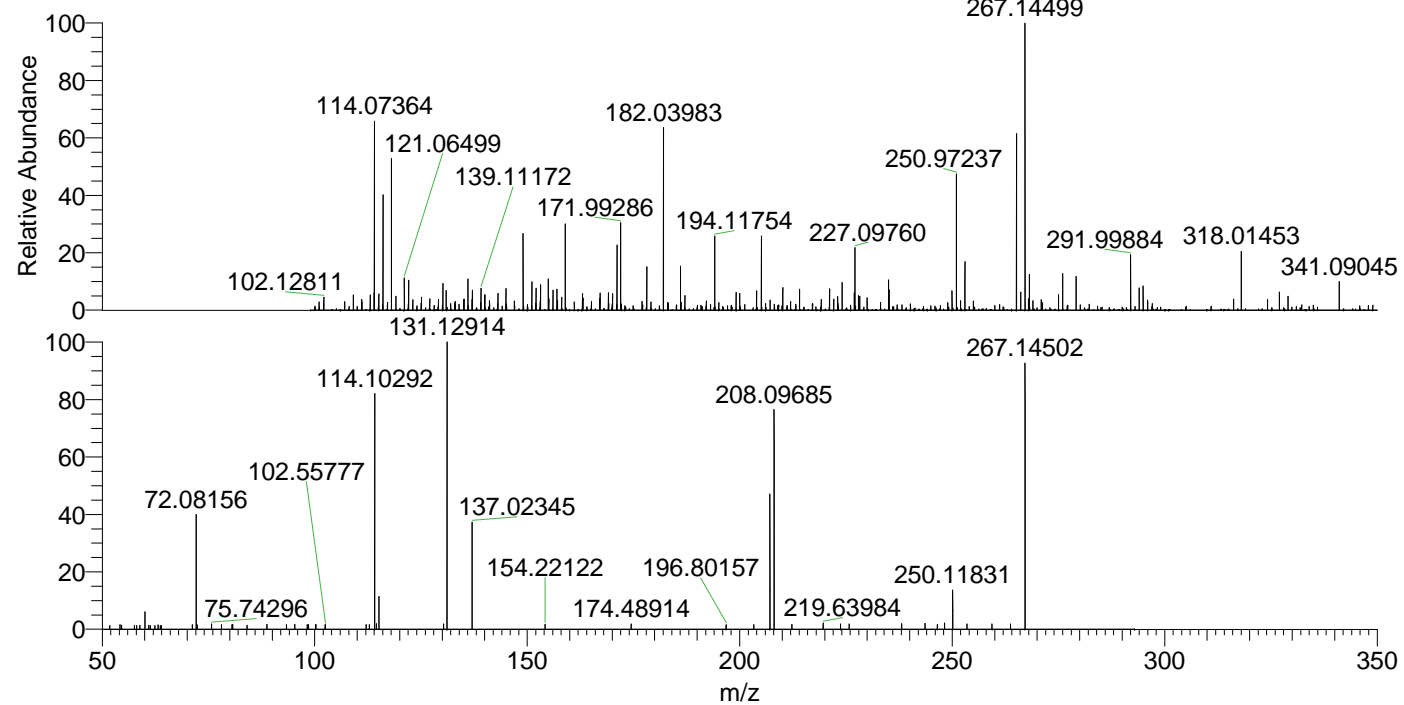
NL: 4.42E5
 m/z= 267.14438-267.14706 F: FTMS + p
 ESI Full ms [100.00-1500.00] MS Pviridans

NL: 0
 m/z= 134.07610-134.07744 F: FTMS + p
 ESI Full ms [100.00-1500.00] MS Pviridans

NL: 4.75E4
 Base Peak m/z= 50.00000-1500.00000 F:
 FTMS + p ESI d Full ms2
 267.14@hcd35.00 [50.00-290.00] MS
 Pviridans

Pviridans#4654-4676 RT: 11.71-11.77
 F: FTMS + p ESI d Full ms2 267.14 ...
 m/z= 50.00000-1000.00000

m/z	Intensity	Relative
54.19792	566.3	1.65
54.56108	470.1	1.37
58.83163	479.9	1.40
60.05646	2086.7	6.09
60.93853	468.7	1.37
61.35623	441.5	1.29
62.36713	452.4	1.32
63.14766	507.8	1.48
63.67784	452.5	1.32
63.89789	450.5	1.31
71.22804	565.2	1.65
72.08156	13752.5	40.14
72.26424	498.1	1.45
72.32723	511.7	1.49
75.74296	623.4	1.82
78.02563	567.6	1.66
80.56102	564.7	1.65
80.71371	597.0	1.74
84.06791	496.4	1.45
88.76336	585.3	1.71
93.31836	556.5	1.62
95.32253	583.4	1.70
98.21139	563.7	1.65
98.54338	560.5	1.64
100.20643	590.9	1.72
100.24964	561.9	1.64
102.48573	558.6	1.63
102.55777	520.9	1.52
112.10180	555.8	1.62
112.84321	571.8	1.67
114.10292	28494.1	83.16
114.50832	672.3	1.96
115.08671	3996.1	11.66
130.34827	651.7	1.90
131.12914	34262.5	100.00
137.02345	13095.7	38.22
154.22122	591.4	1.73
174.48914	634.9	1.85
196.80157	582.1	1.70
203.31503	556.3	1.62
207.11301	16522.8	48.22
208.09685	26229.9	76.56
212.29862	607.1	1.77
219.63984	748.7	2.19
223.75126	630.8	1.84
225.74410	630.1	1.84
238.10811	680.7	1.99
243.61689	716.2	2.09
246.51119	598.3	1.75
248.22049	746.4	2.18
250.11831	4674.2	13.64
253.47009	626.0	1.83
259.37559	663.7	1.94
263.73425	627.2	1.83
267.14502	31830.4	92.90



NL: 4.27E5
 Pviridans#4657 RT: 11.72
 AV: 1 T: FTMS + p ESI
 Full lock ms
 [100.00-1500.00]

NL: 3.43E4
 Pviridans#4556-4727 RT:
 11.71-11.77 AV: 5 F:
 FTMS + p ESI d Full ms2
 267.14@hcd35.00
 [50.00-290.00]