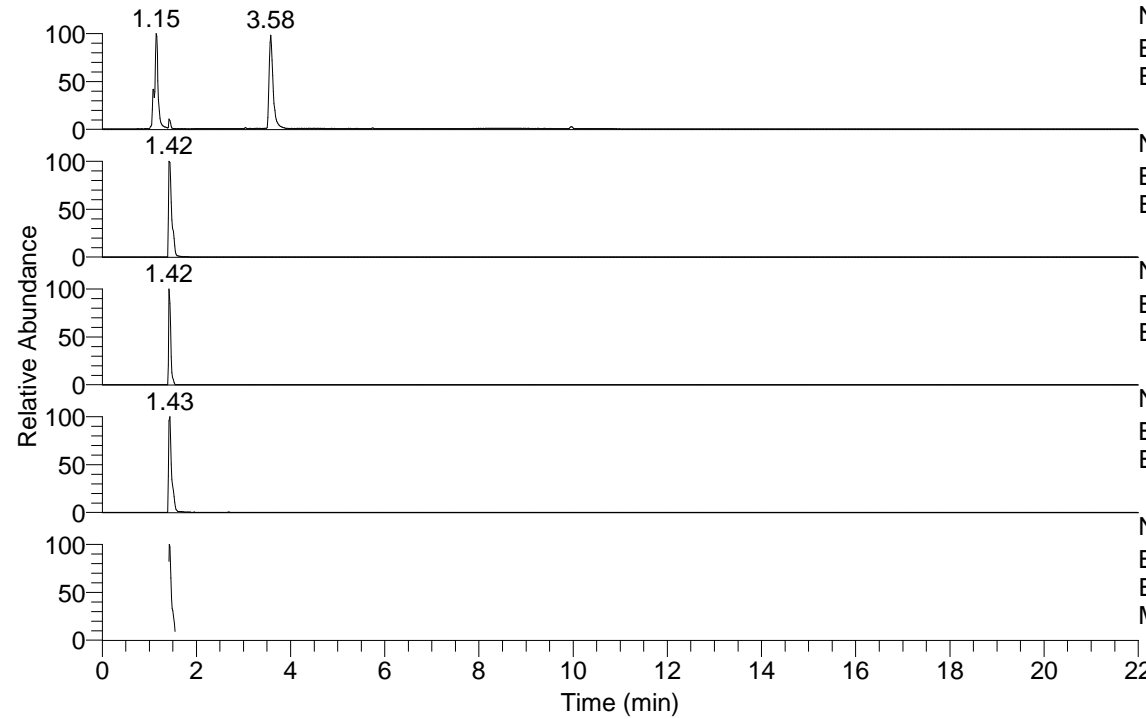


RT: 0.00 - 22.00



NL: 6.97E7
Base Peak m/z= 50.00000-1500.00000 F: FTMS + p
ESI Full ms [100.00-1500.00] MS Pviridans

NL: 2.55E6
Base Peak m/z= 244.09213-244.09457 F: FTMS + p
ESI Full ms [100.00-1500.00] MS Pviridans

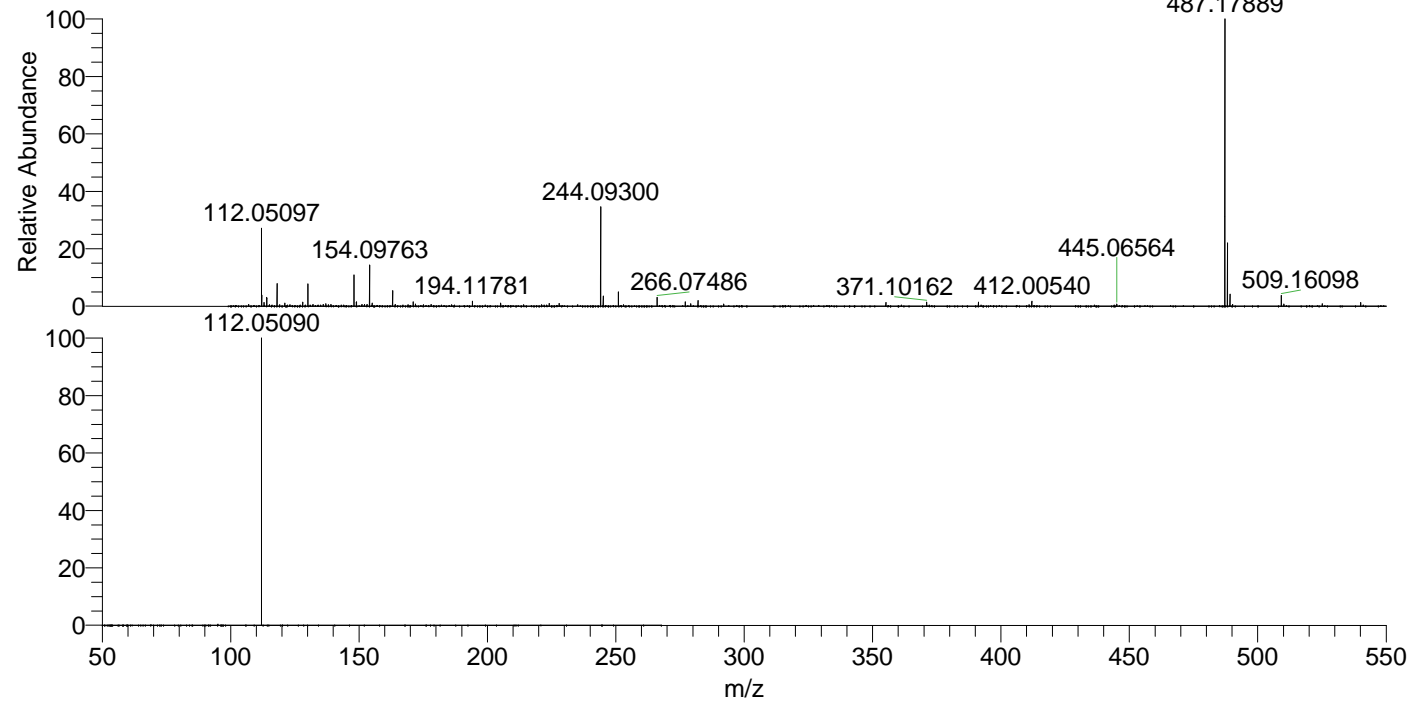
NL: 7.60E6
Base Peak m/z= 487.17643-487.18131 F: FTMS + p
ESI Full ms [100.00-1500.00] MS Pviridans

NL: 2.10E6
Base Peak m/z= 112.05053-112.05165 F: FTMS + p
ESI Full ms [100.00-1500.00] MS Pviridans

NL: 1.93E6
Base Peak m/z= 50.00000-1500.00000 F: FTMS + p
ESI d Full ms2 244.09@hcd35.00 [50.00-265.00]
MS Pviridans

Pviridans#569-621 RT: 1.41-1.55 AV: 10
F: FTMS + p ESI d Full ms2 244.09 ...
m/z= 50.00000-1000.00000

m/z	Intensity	Relative
112.05090	910442.5	100.00



NL: 7.13E6
Pviridans#571 RT: 1.42
AV: 1 T: FTMS + p ESI
Full lock ms
[100.00-1500.00]

NL: 8.82E5
Pviridans#527-672 RT:
1.41-1.55 AV: 10 F:
FTMS + p ESI d Full ms2
244.09@hcd35.00
[50.00-265.00]