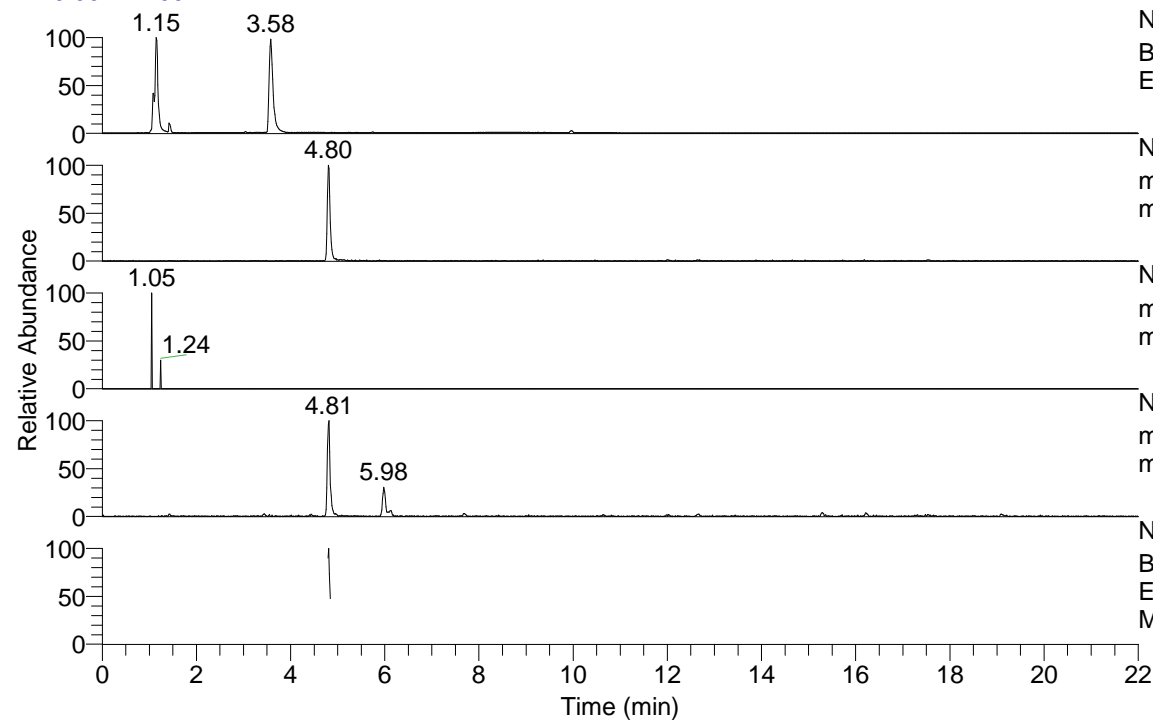


RT: 0.00 - 22.00



NL: 6.97E7
Base Peak m/z= 50.00000-1500.00000 F: FTMS + p
ESI Full ms [100.00-1500.00] MS Pviridans

NL: 3.83E5
m/z= 166.08597-166.08763 F: FTMS + p ESI Full
ms [100.00-1500.00] MS Pviridans

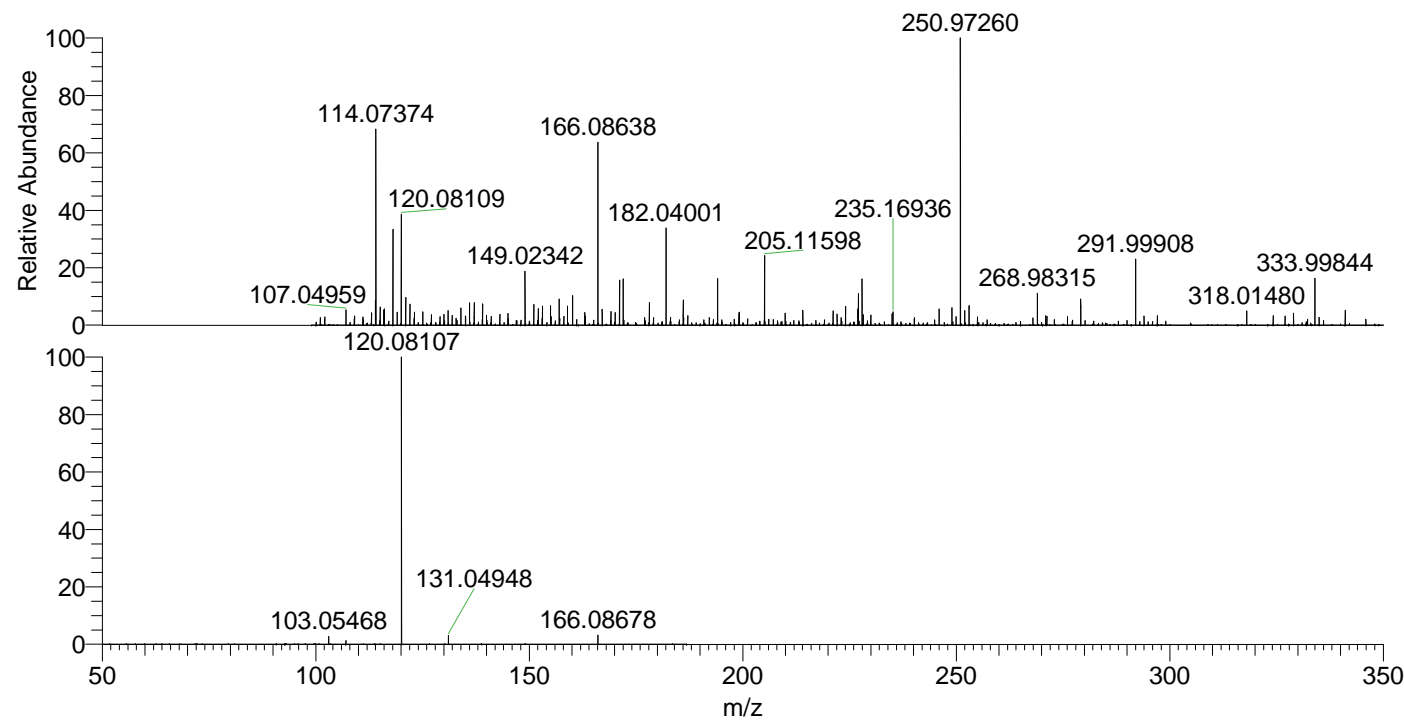
NL: 4.60E3
m/z= 331.16412-331.16744 F: FTMS + p ESI Full
ms [100.00-1500.00] MS Pviridans

NL: 2.36E5
m/z= 120.08072-120.08192 F: FTMS + p ESI Full
ms [100.00-1500.00] MS Pviridans

NL: 4.13E5
Base Peak m/z= 50.00000-1500.00000 F: FTMS + p
ESI d Full ms2 166.09@hcd35.00 [50.00-185.00]
MS Pviridans

Pviridans#1913-1931 RT: 4.79-4.84 AV:
F: FTMS + p ESI d Full ms2 166.09 ...
m/z= 50.00000-1000.00000

m/z	Intensity	Relative
103.05468	8114.7	2.70
107.04966	3840.1	1.28
120.08107	300609.6	100.00
131.04948	9231.6	3.07
166.08678	9498.8	3.16



NL: 5.69E5
Pviridans#1915 RT: 4.80
AV: 1 T: FTMS + p ESI
Full lock ms
[100.00-1500.00]

NL: 3.00E5
Pviridans#1878-1956 RT:
4.79-4.84 AV: 4 F: FTMS
+ p ESI d Full ms2
166.09@hcd35.00
[50.00-185.00]