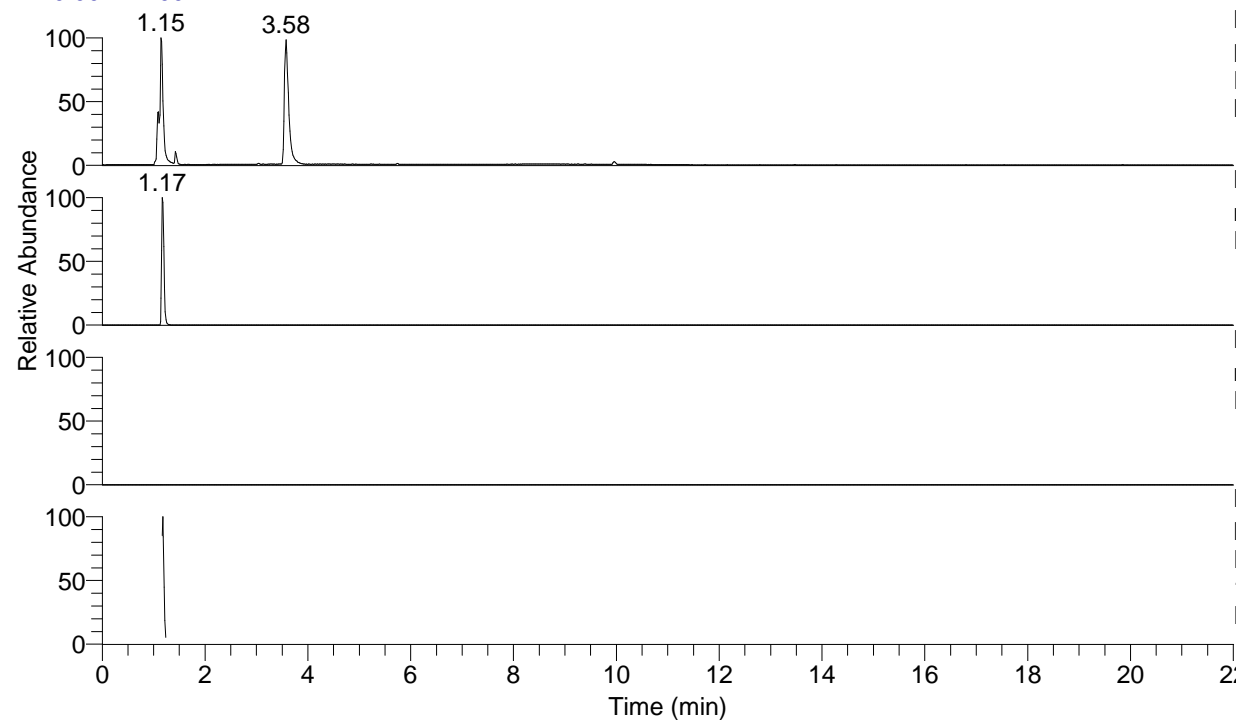


RT: 0.00 - 22.00



NL: 6.97E7
Base Peak m/z= 50.00000-1500.00000 F:
FTMS + p ESI Full ms [100.00-1500.00]
MS Pviridans

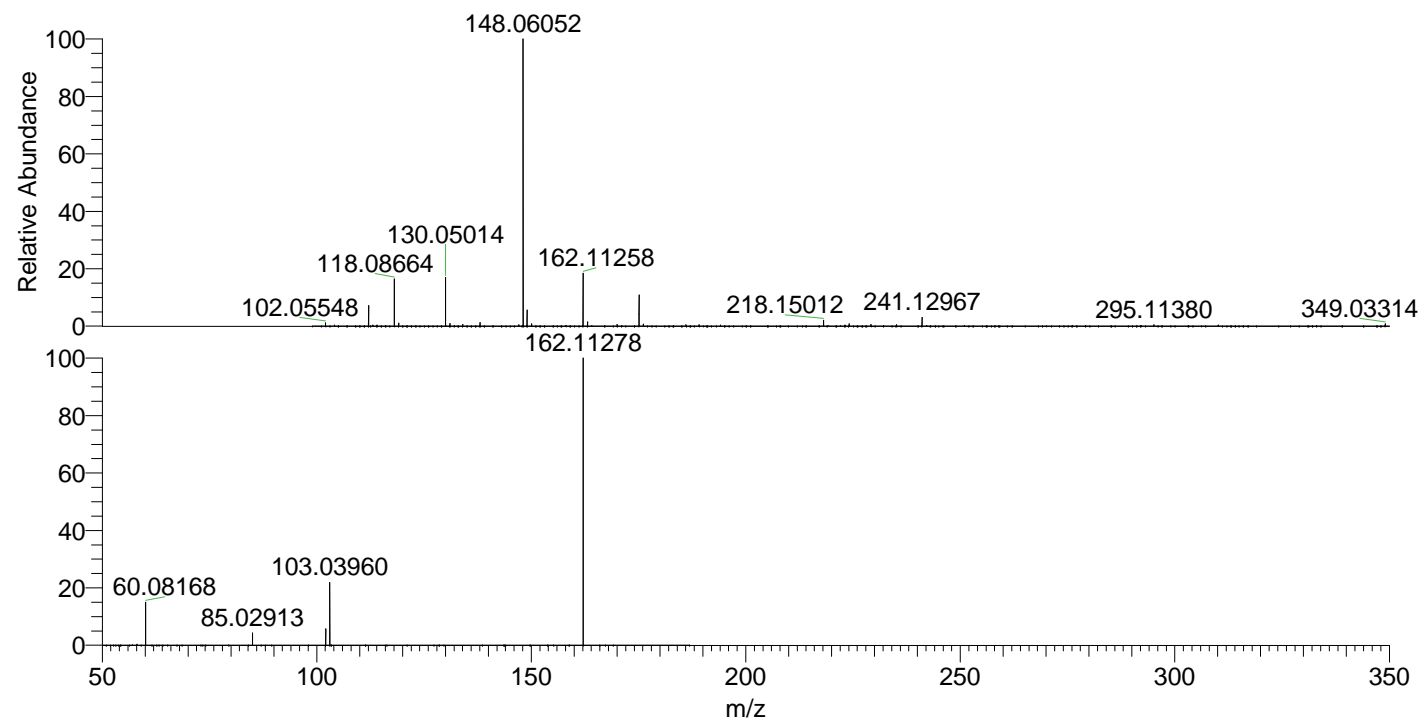
NL: 1.07E7
m/z= 162.11220-162.11382 F: FTMS + p
ESI Full ms [100.00-1500.00] MS Pviridans

NL: 0
m/z= 323.21659-323.21983 F: FTMS + p
ESI Full ms [100.00-1500.00] MS Pviridans

NL: 4.85E6
Base Peak m/z= 50.00000-1500.00000 F:
FTMS + p ESI d Full ms2
162.11@hcd35.00 [50.00-185.00] MS
Pviridans

Pviridans#468-498 RT: 1.17-1.24 AV: 6
F: FTMS + p ESI d Full ms2 162.11@h ...
m/z= 50.00000-1000.00000

m/z	Intensity	Relative
60.08168	375445.3	14.80
85.02913	107290.5	4.23
102.09194	143372.0	5.65
103.03960	556925.9	21.96
162.11278	2536375.5	100.00



NL: 5.51E7
Pviridans#469 RT: 1.17
AV: 1 T: FTMS + p ESI
Full ms [100.00-1500.00]

NL: 2.51E6
Pviridans#396-528 RT:
1.17-1.24 AV: 6 F: FTMS
+ p ESI d Full ms2
162.11@hcd35.00
[50.00-185.00]