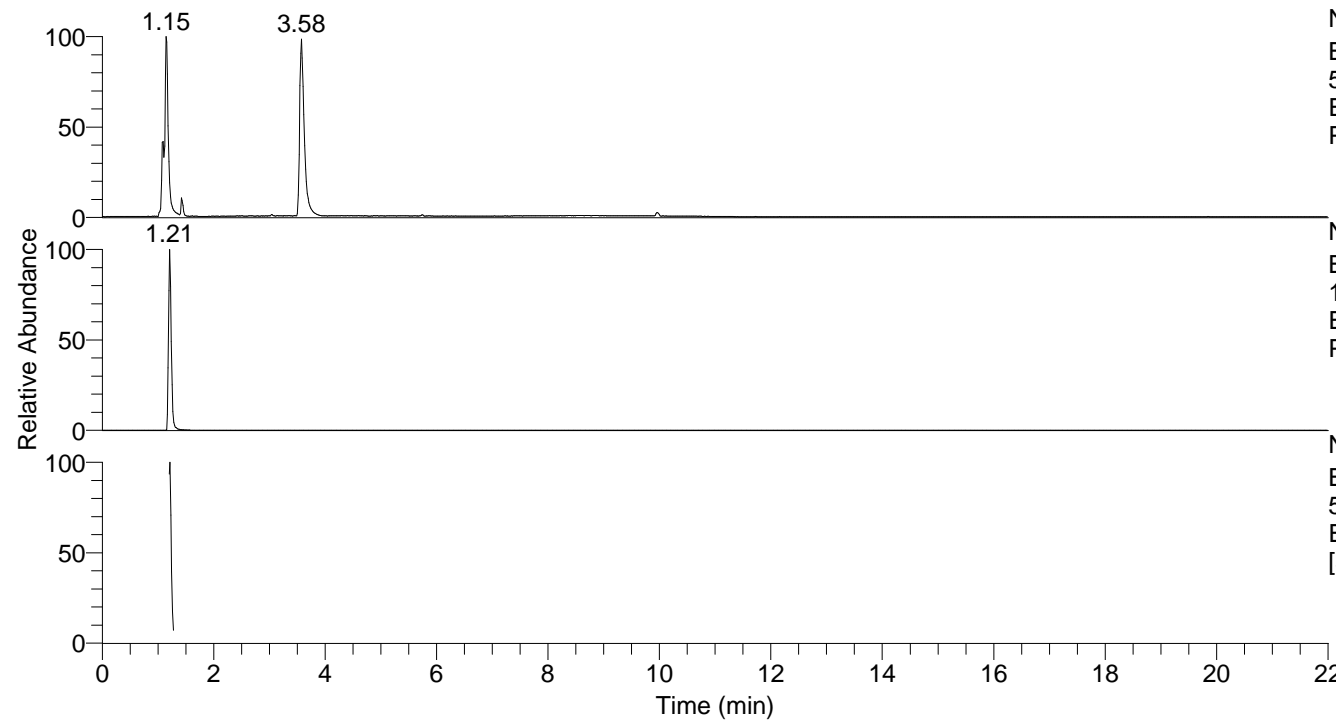


RT: 0.00 - 22.00



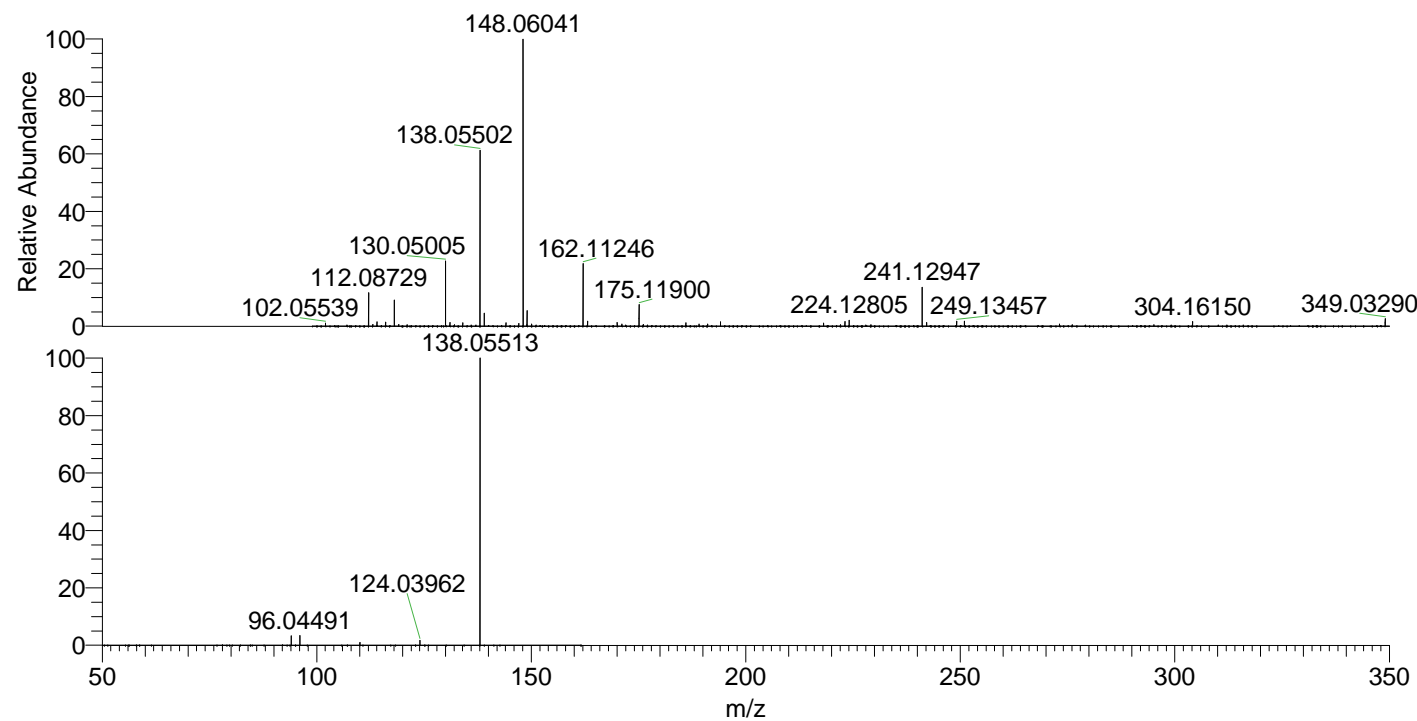
NL: 6.97E7
Base Peak m/z=
50.00000-1500.00000 F: FTMS + p
ESI Full ms [100.00-1500.00] MS
Pviridans

NL: 8.41E6
Base Peak m/z=
138.05481-138.05619 F: FTMS + p
ESI Full ms [100.00-1500.00] MS
Pviridans

NL: 5.64E6
Base Peak m/z=
50.00000-1500.00000 F: FTMS + p
ESI d Full ms2 138.06@hcd35.00
[50.00-160.00] MS Pviridans

Pviridans#484-513 RT: 1.20-1.28 AV: 6
F: FTMS + p ESI d Full ms2 138.06@h ...
m/z= 50.00000-1000.00000

m/z	Intensity	Relative
94.06567	98599.1	3.27
96.04491	104410.5	3.47
110.06050	27999.2	0.93
124.03962	51647.9	1.72
138.05513	3011241.3	100.00



NL: 1.34E7
Pviridans#487 RT: 1.21
AV: 1 T: FTMS + p ESI
Full lock ms
[100.00-1500.00]

NL: 3.01E6
Pviridans#403-555 RT:
1.20-1.28 AV: 6 F: FTMS
+ p ESI d Full ms2
138.06@hcd35.00
[50.00-160.00]