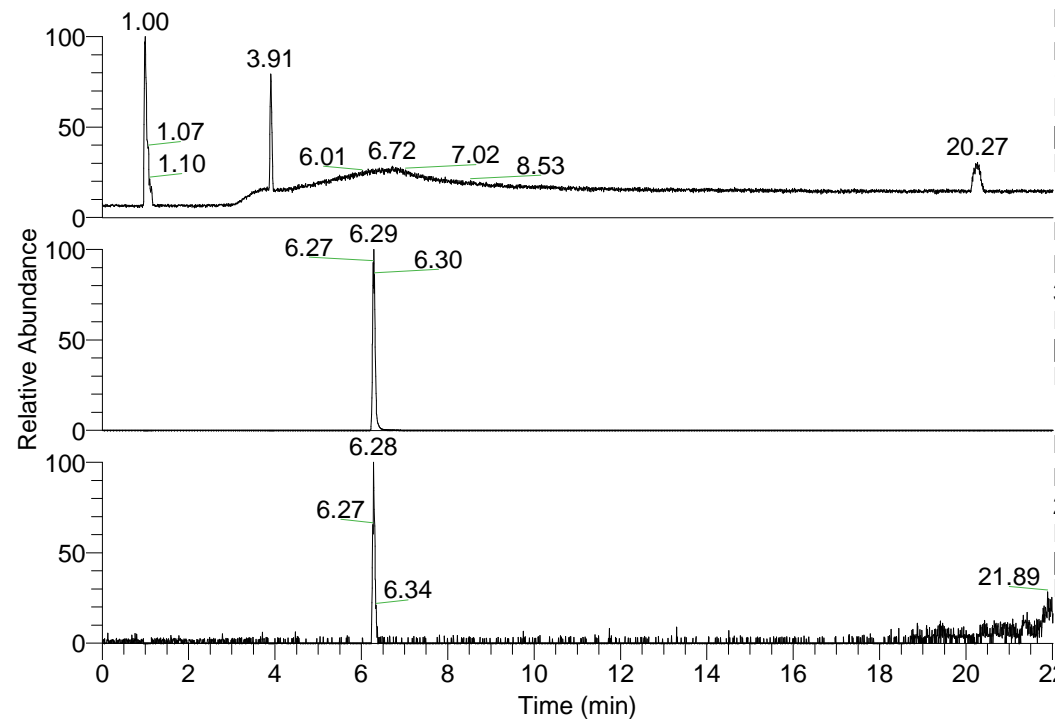


RT: 0.00 - 22.01



NL: 1.22E8
 Base Peak m/z=
 100.00000-1500.00000 F:
 FTMS + p ESI Full ms
 [100.00-1500.00] MS
 Ptristis_HDX

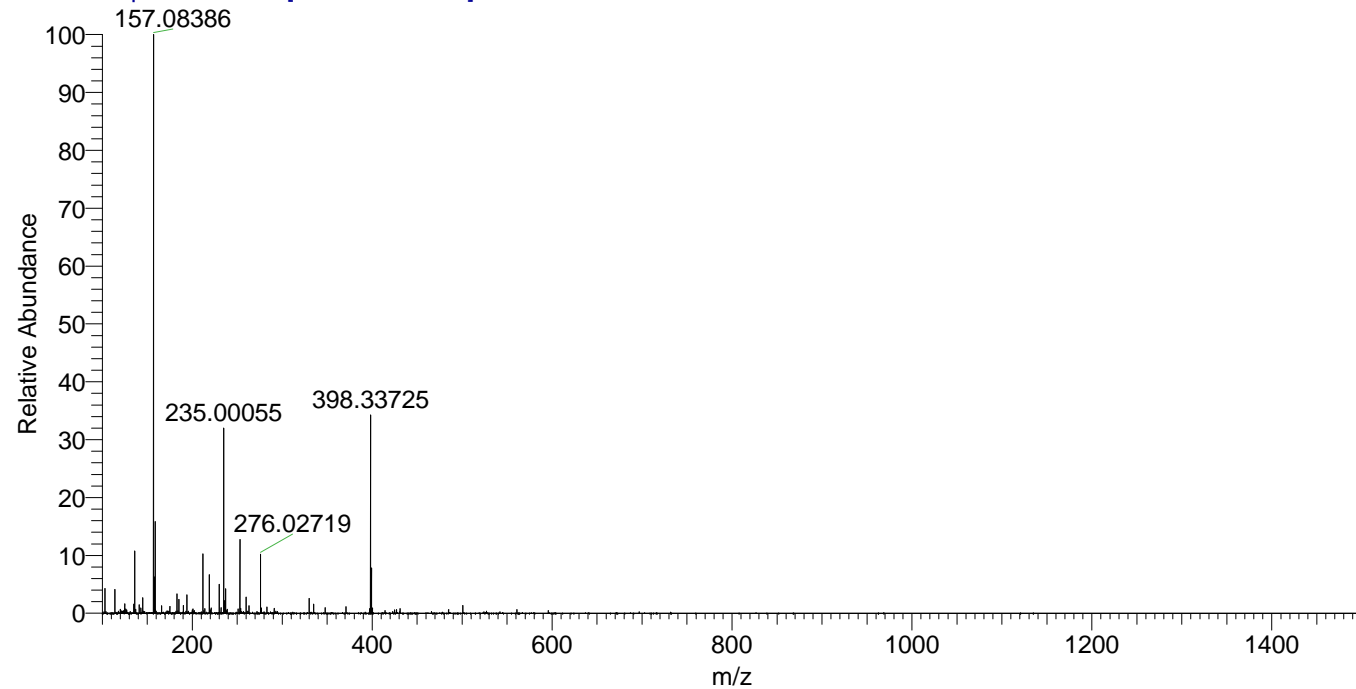
NL: 1.10E7
 Base Peak m/z=
 398.33513-398.33911 F:
 FTMS + p ESI Full ms
 [100.00-1500.00] MS
 Ptristis_HDX

NL: 1.34E5
 Base Peak m/z=
 200.17461-200.17661 F:
 FTMS + p ESI Full ms
 [100.00-1500.00] MS
 Ptristis_HDX

Ptristis_HDX#989 RT: 6.29
 T: FTMS + p ESI Full ms [100.00-1500.00]
 m/z= 398.00000-399.00000

m/z	Intensity	Relative	Delta (ppm)	Composition
398.33725	11007254.0	100.00	1.72	C ₂₁ H ₂₈ ² H ₈ O ₂ N ₅
			-2.17	C ₂₁ H ₃₀ ² H ₇ O ₂ N ₅

Ptristis_HDX #989 RT: 6.29 AV: 1 NL: 3.13E7
 T: FTMS + p ESI Full ms [100.00-1500.00]



Ptristis_HDX #989 RT: 6.29 AV: 1 NL: 1.07E7
 T: FTMS + p ESI Full ms [100.00-1500.00]

