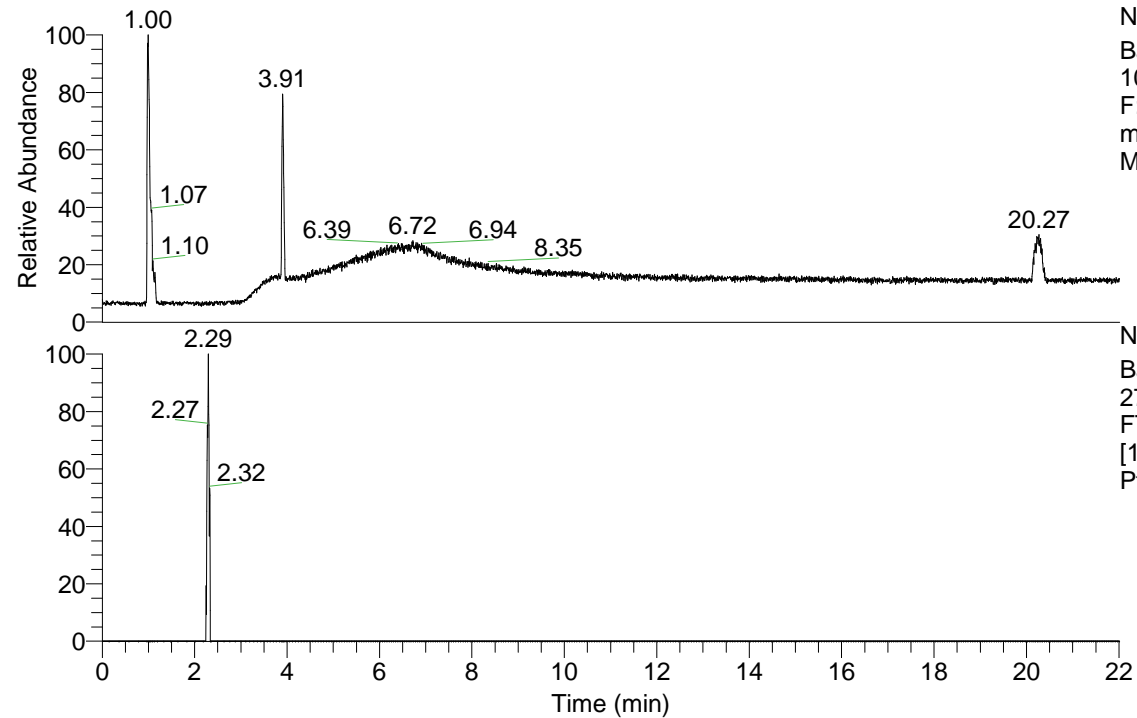


RT: 0.00 - 22.01

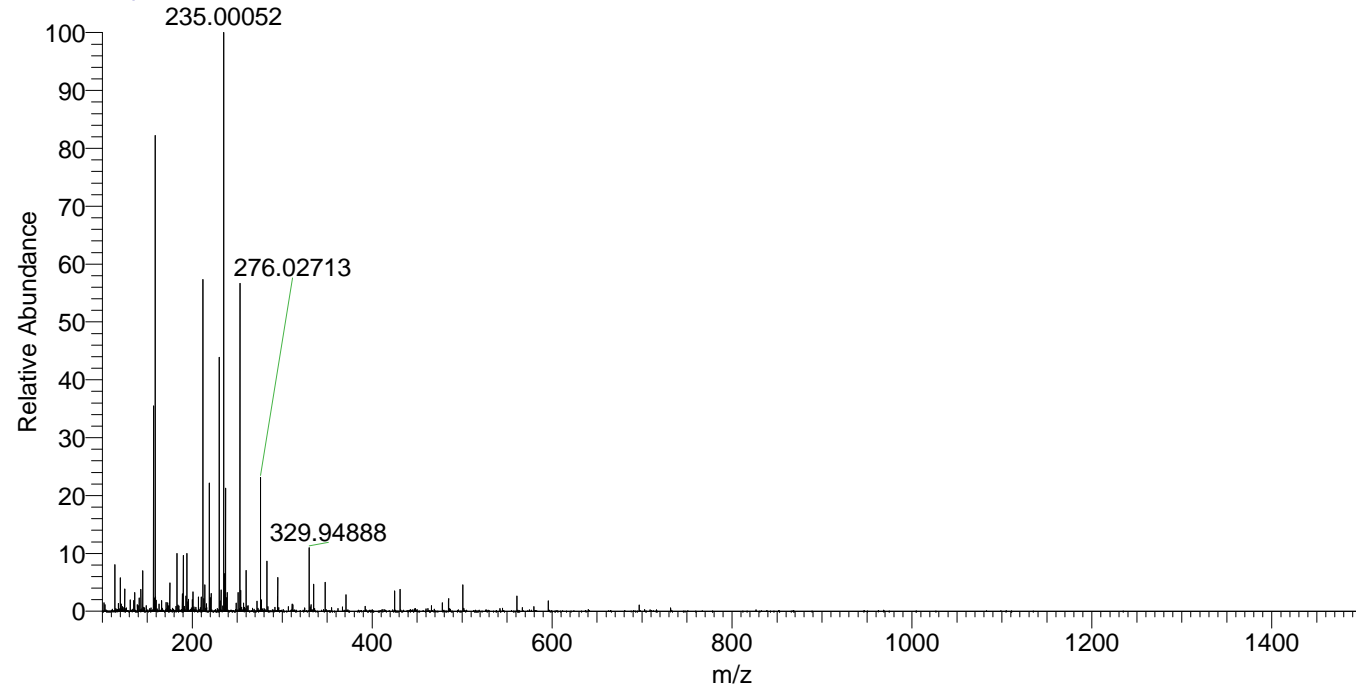


NL: 1.22E8
Base Peak m/z=
100.00000-1500.00000
F: FTMS + p ESI Full
ms [100.00-1500.00]
MS Ptristis_HDX

Ptristis_HDX#348 RT: 2.29
T: FTMS + p ESI Full ms [100.00-1500.00]
m/z= 274.00000-275.00000

m/z	Intensity	Relative	Delta (ppm)	Composition
274.11963	17289.4	100.00	0.73	C ₁₀ H ₈ ² H ₅ O ₅ N ₄
			-4.92	C ₁₀ H ₁₀ ² H ₄ O ₅ N ₄

Ptristis_HDX #348 RT: 2.29 AV: 1 NL: 7.28E6
T: FTMS + p ESI Full ms [100.00-1500.00]



Ptristis_HDX #348 RT: 2.29 AV: 1 NL: 1.69E6
T: FTMS + p ESI Full ms [100.00-1500.00]

