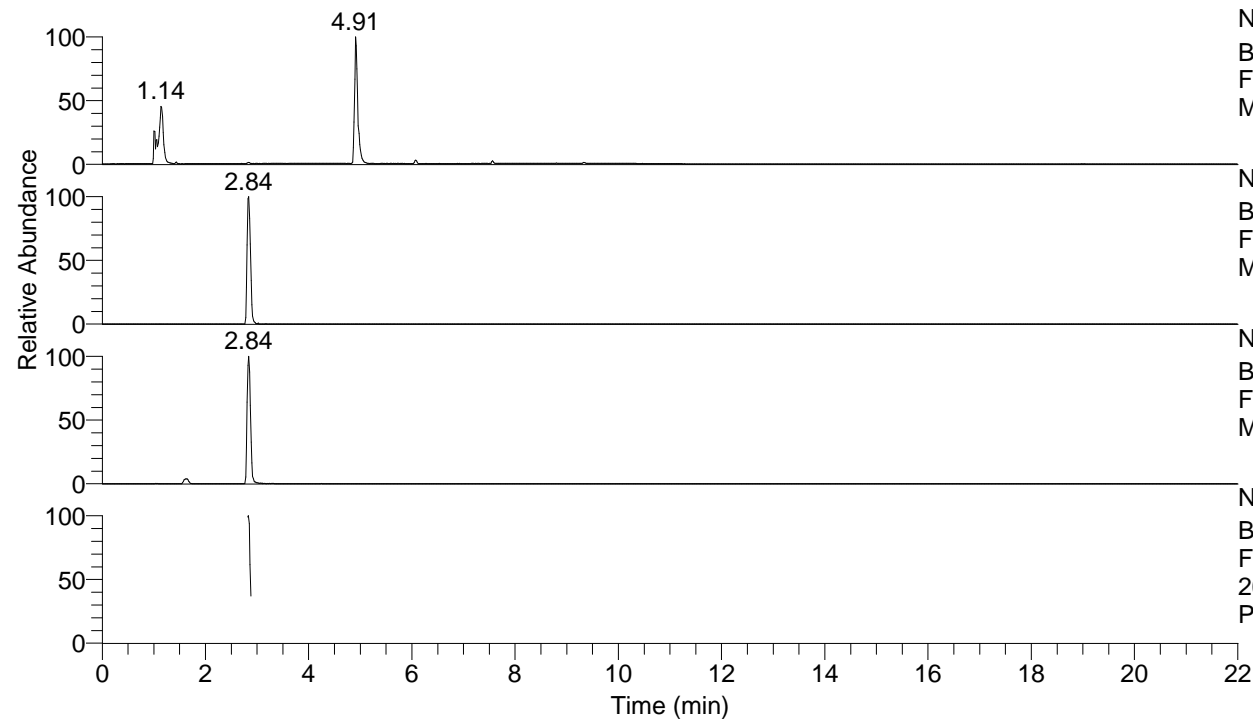


RT: 0.00 - 22.00



NL: 8.06E7
 Base Peak m/z= 100.00000-1500.00000 F:
 FTMS + p ESI Full ms [100.00-1500.00]
 MS Ptristis

NL: 4.80E5
 Base Peak m/z= 269.08724-269.08994 F:
 FTMS + p ESI Full ms [100.00-1500.00]
 MS Ptristis

NL: 1.29E6
 Base Peak m/z= 137.04565-137.04703 F:
 FTMS + p ESI Full ms [100.00-1500.00]
 MS Ptristis

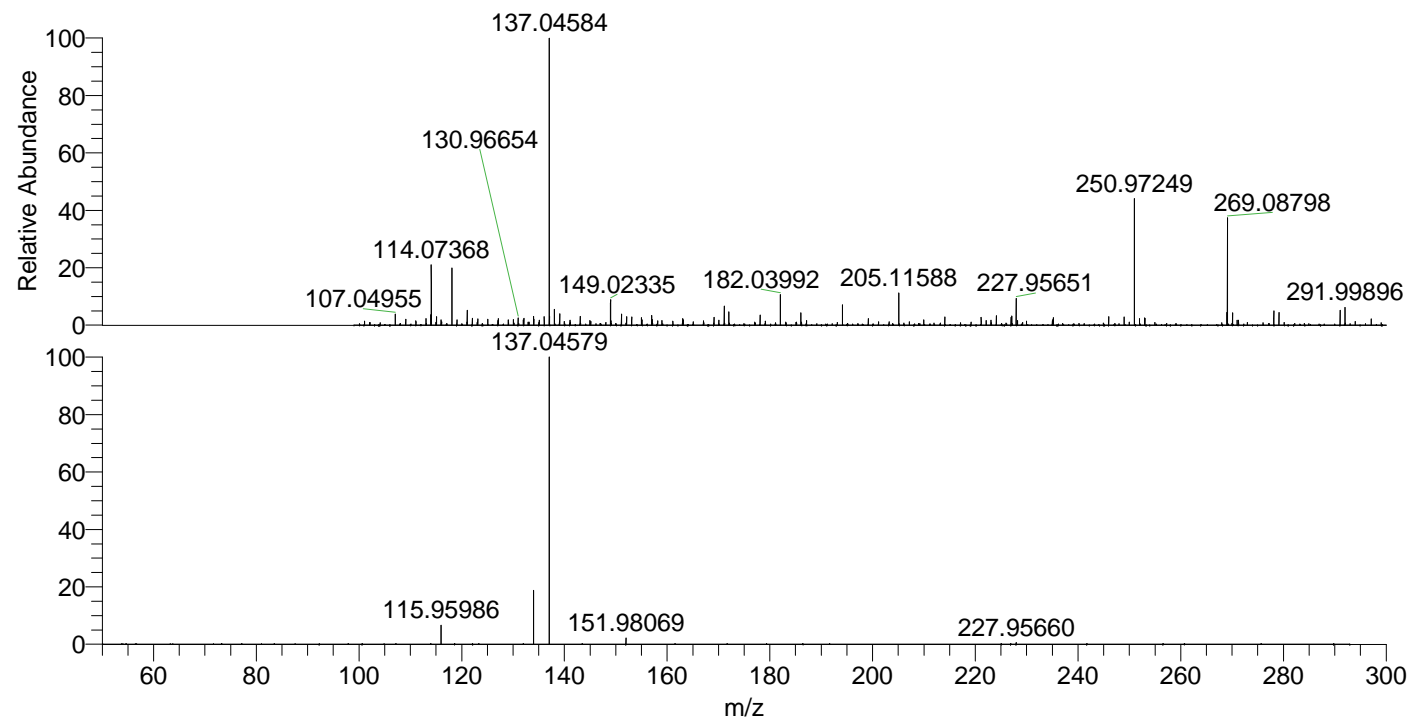
NL: 3.38E5
 Base Peak m/z= 50.00000-1500.00000 F:
 FTMS + p ESI d Full ms2
 269.09@hcd35.00 [50.00-290.00] MS
 Ptristis

Ptristis#1127-1151 RT: 2.82-2.88 AV: 5

F: FTMS + p ESI d Full ms2 269.09 ...

m/z= 50.00000-1000.00000

m/z	Intensity	Relative
115.95986	16305.9	6.61
133.96990	47913.9	19.41
137.04579	246836.8	100.00
151.98069	5580.7	2.26
227.95660	1604.3	0.65



NL: 1.26E6
 Ptristis#1135 RT: 2.84
 AV: 1 T: FTMS + p ESI
 Full lock ms
 [100.00-1500.00]

NL: 2.46E5
 Ptristis#1123-1155 RT:
 2.82-2.88 AV: 5 F: FTMS
 + p ESI d Full ms2
 269.09@hcd35.00
 [50.00-290.00]