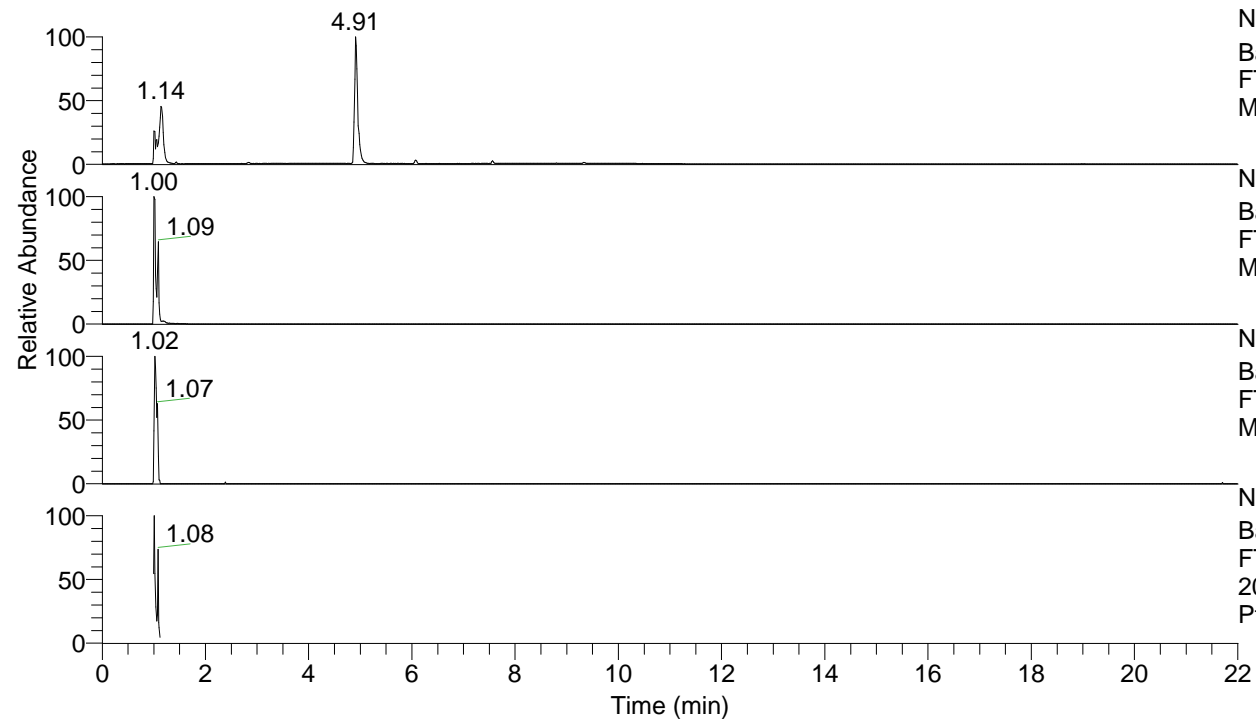


RT: 0.00 - 22.00



NL: 8.06E7
 Base Peak m/z= 100.00000-1500.00000 F:
 FTMS + p ESI Full ms [100.00-1500.00]
 MS Ptristis

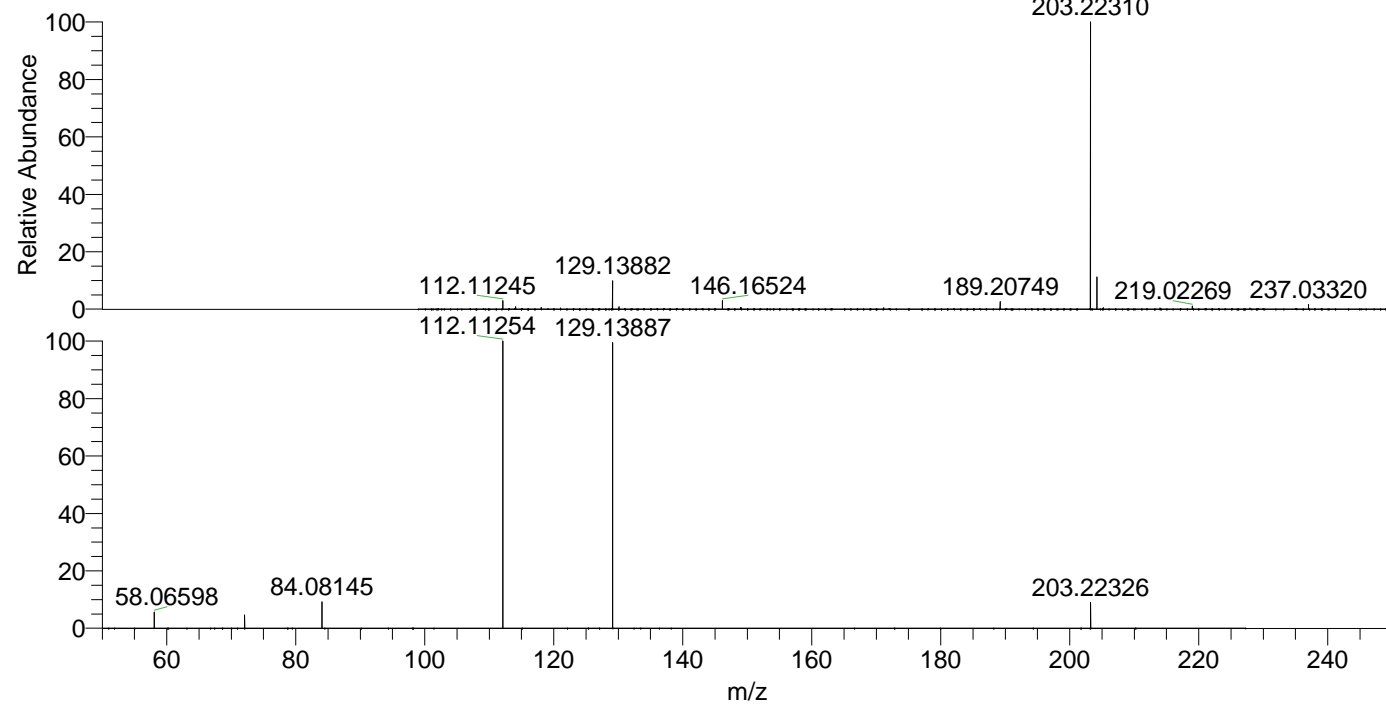
NL: 2.12E7
 Base Peak m/z= 203.22255-203.22459 F:
 FTMS + p ESI Full ms [100.00-1500.00]
 MS Ptristis

NL: 7.72E4
 Base Peak m/z= 102.11519-102.11621 F:
 FTMS + p ESI Full ms [100.00-1500.00]
 MS Ptristis

NL: 8.04E6
 Base Peak m/z= 50.00000-1500.00000 F:
 FTMS + p ESI d Full ms2
 203.22@hcd35.00 [50.00-225.00] MS
 Ptristis

Ptristis#394-410 RT: 1.00-1.04 AV: 4
 F: FTMS + p ESI d Full ms2 203.22@h ...
 m/z= 50.00000-1000.00000

m/z	Intensity	Relative
58.06598	244424.5	5.54
72.08157	204867.2	4.64
84.08145	400618.2	9.07
112.11254	4319695.5	97.84
129.13887	4415182.0	100.00
203.22326	387998.2	8.79



NL: 2.01E7
 Ptristis#397 RT: 1.00
 AV: 1 T: FTMS + p ESI
 Full lock ms
 [100.00-1500.00]

NL: 4.31E6
 Ptristis#391-412 RT:
 1.00-1.04 AV: 4 F: FTMS
 + p ESI d Full ms2
 203.22@hcd35.00
 [50.00-225.00]