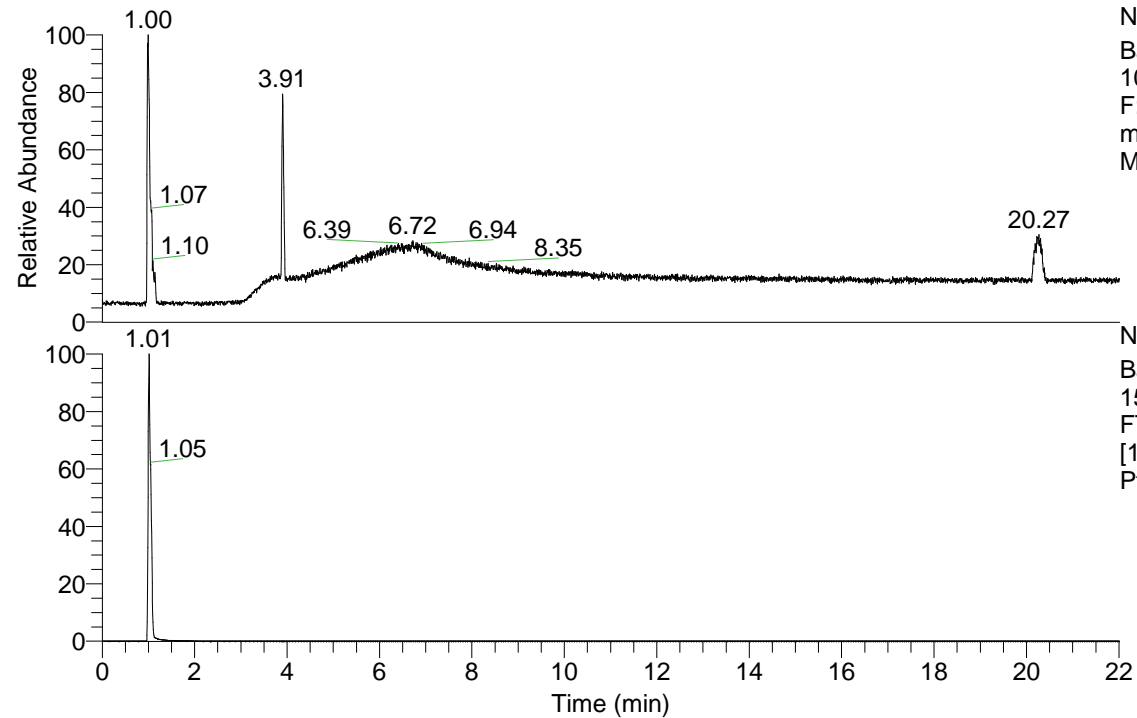


RT: 0.00 - 22.01

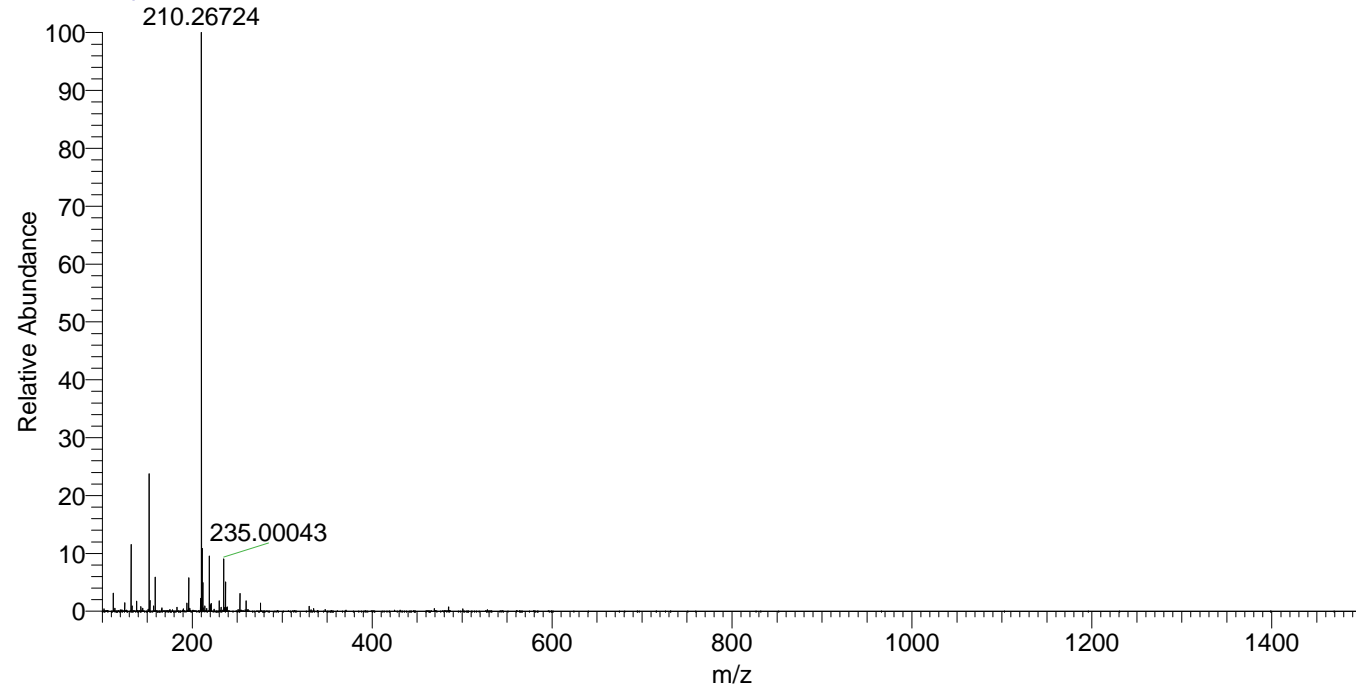


NL: 1.22E8
Base Peak m/z=
100.00000-1500.00000
F: FTMS + p ESI Full
ms [100.00-1500.00]
MS Ptristis_HDX

Ptristis_HDX#152 RT: 1.01
T: FTMS + p ESI Full ms [100.00-1500.00]
m/z= 152.00000-153.00000

m/z	Intensity	Relative	Delta (ppm)	Composition
152.20308	23972910.0	100.00	1.61	C ₇ H ₁₄ ² H ₆ N ₃

Ptristis_HDX #152 RT: 1.01 AV: 1 NL: 1.01E8
T: FTMS + p ESI Full ms [100.00-1500.00]



NL: 2.62E7
Base Peak m/z=
152.20262-152.20414 F:
FTMS + p ESI Full ms
[100.00-1500.00] MS
Ptristis_HDX

Ptristis_HDX #152 RT: 1.01 AV: 1 NL: 2.40E7
T: FTMS + p ESI Full ms [100.00-1500.00]

