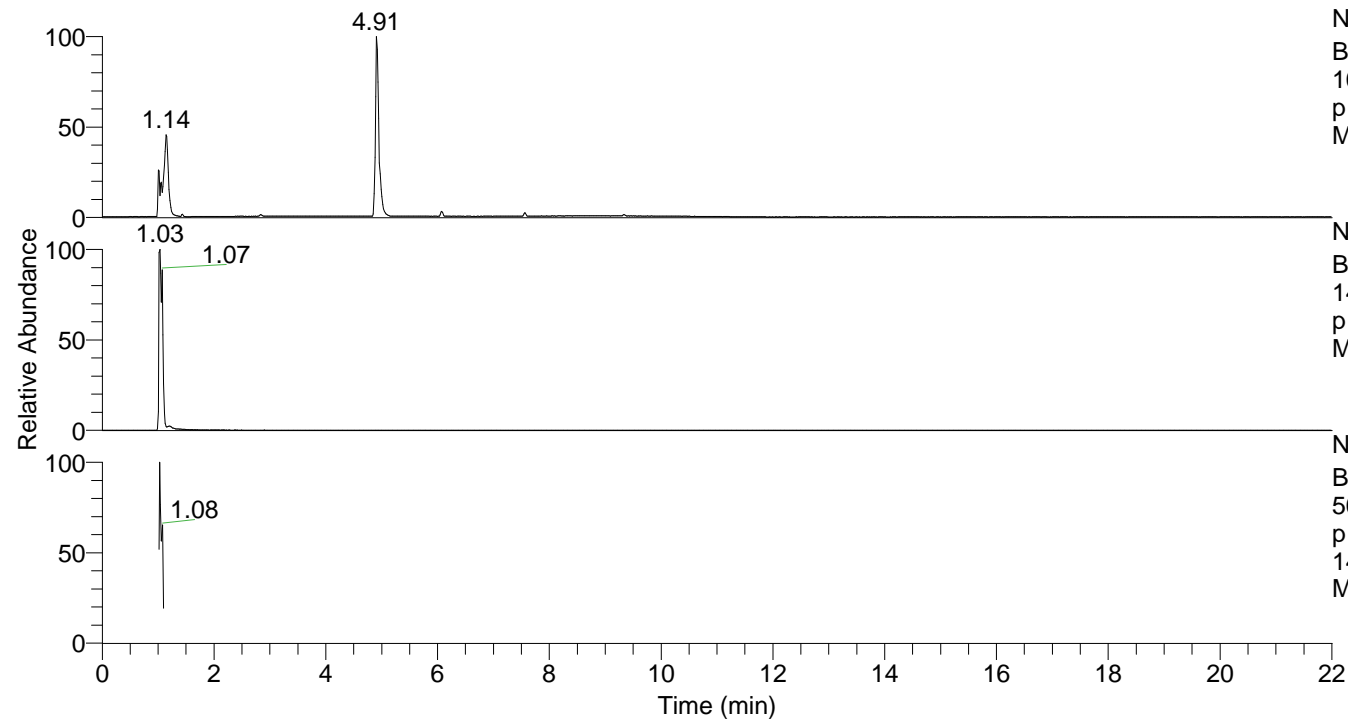


RT: 0.00 - 22.00



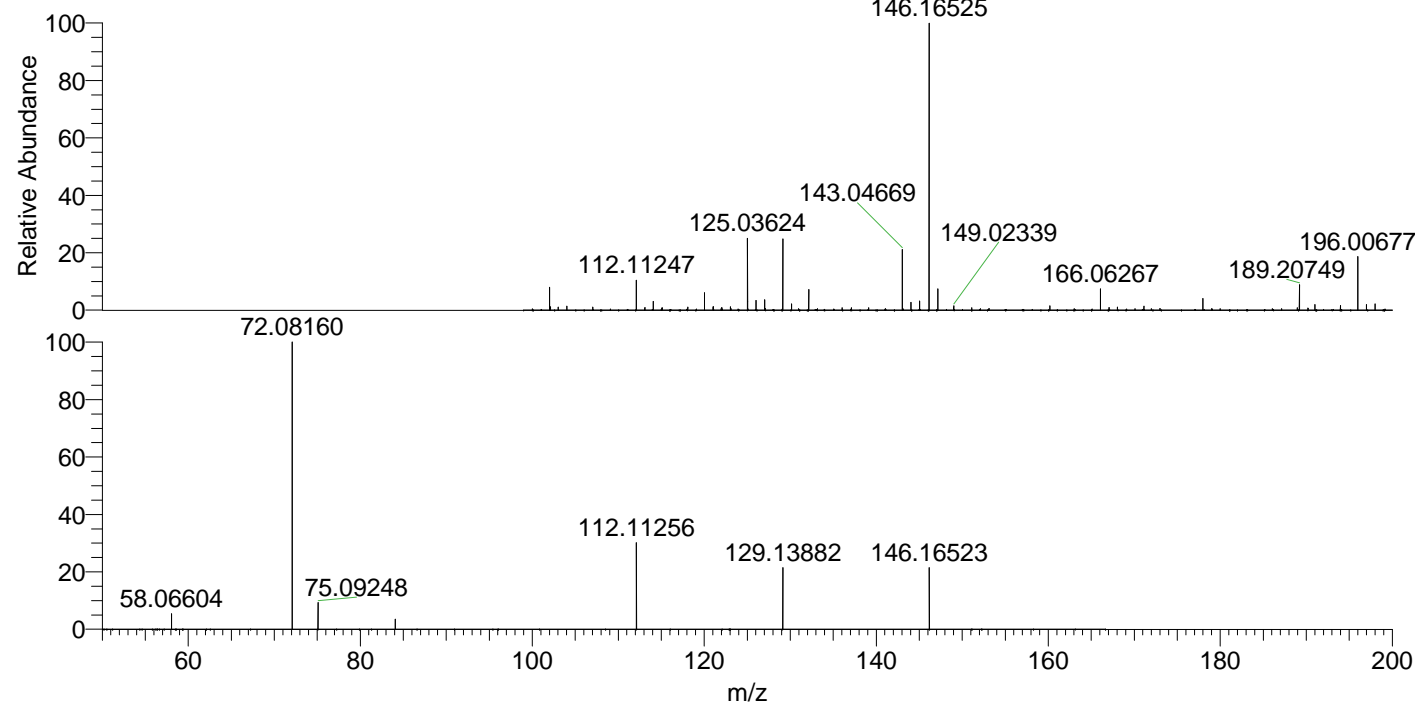
NL: 8.06E7
 Base Peak m/z=
 100.00000-1500.00000 F: FTMS +
 p ESI Full ms [100.00-1500.00]
 MS Ptristis

NL: 5.86E6
 Base Peak m/z=
 146.16499-146.16645 F: FTMS +
 p ESI Full ms [100.00-1500.00]
 MS Ptristis

NL: 3.89E6
 Base Peak m/z=
 50.00000-1500.00000 F: FTMS +
 p ESI d Full ms2
 146.17@hcd35.00 [50.00-165.00]
 MS Ptristis

Ptristis#402-420 RT: 1.02-1.06 AV: 4
 F: FTMS + p ESI d Full ms2 146.17@h ...
 m/z= 50.00000-1000.00000

m/z	Intensity	Relative
58.06604	135046.1	5.19
72.08160	2603370.0	100.00
75.09248	236516.1	9.08
84.08147	88260.4	3.39
112.11256	765415.1	29.40
129.13882	544742.4	20.92
146.16523	541981.9	20.82



NL: 5.75E6
 Ptristis#409 RT: 1.03
 AV: 1 T: FTMS + p ESI
 Full ms [100.00-1500.00]

NL: 2.50E6
 Ptristis#399-421 RT:
 1.02-1.06 AV: 4 F: FTMS
 + p ESI d Full ms2
 146.17@hcd35.00
 [50.00-165.00]