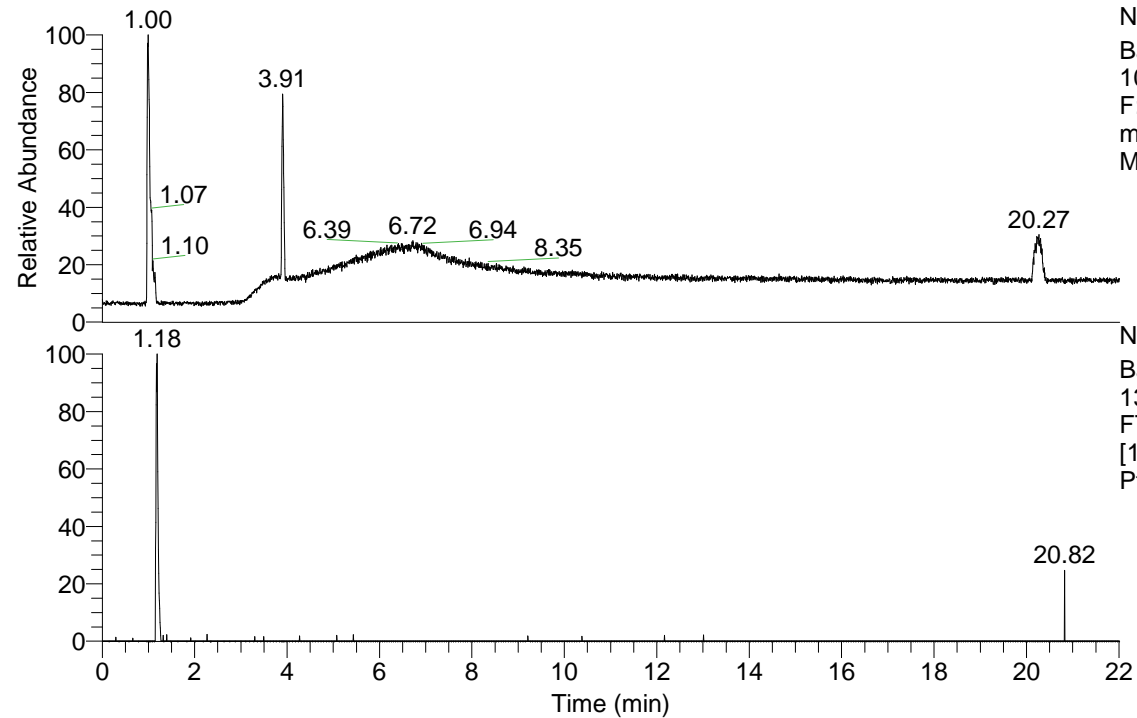


RT: 0.00 - 22.01

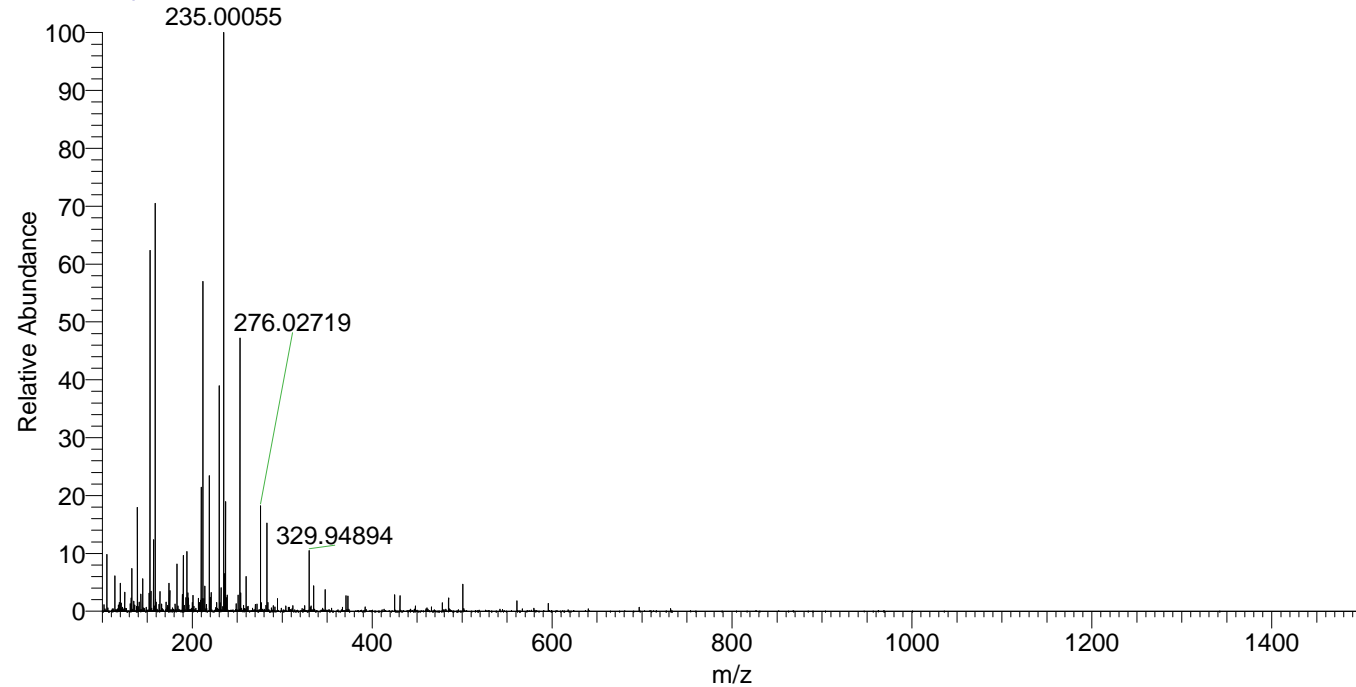


NL: 1.22E8
Base Peak m/z=
100.00000-1500.00000
F: FTMS + p ESI Full
ms [100.00-1500.00]
MS Ptristis_HDX

Ptristis_HDX#181 RT: 1.18
T: FTMS + p ESI Full ms [100.00-1500.00]
m/z= 139.00000-139.07000

m/z	Intensity	Relative	Delta (ppm)	Composition
139.06154	122619.3	100.00	2.21	C ₇ H ₇ ² H O ₂ N

Ptristis_HDX #181 RT: 1.18 AV: 1 NL: 8.36E6
T: FTMS + p ESI Full ms [100.00-1500.00]



Ptristis_HDX #181 RT: 1.18 AV: 1 NL: 1.50E6
T: FTMS + p ESI Full ms [100.00-1500.00]

