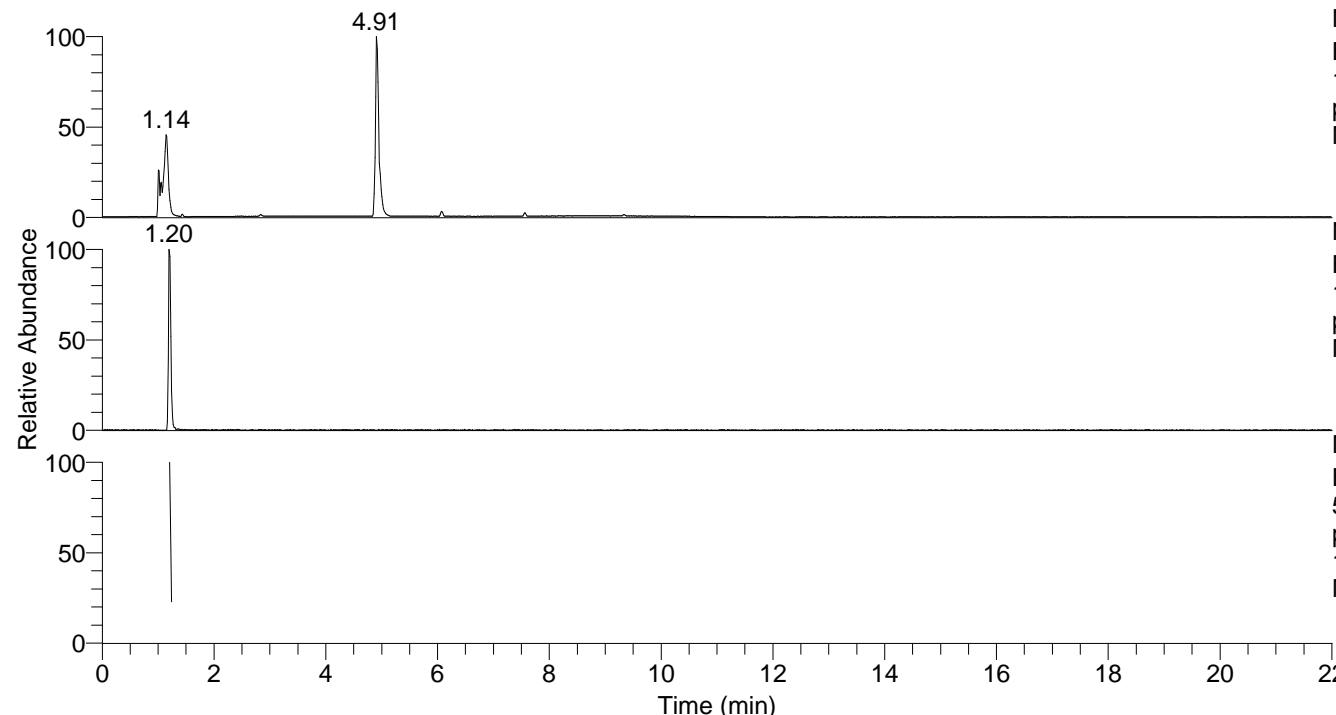


RT: 0.00 - 22.00



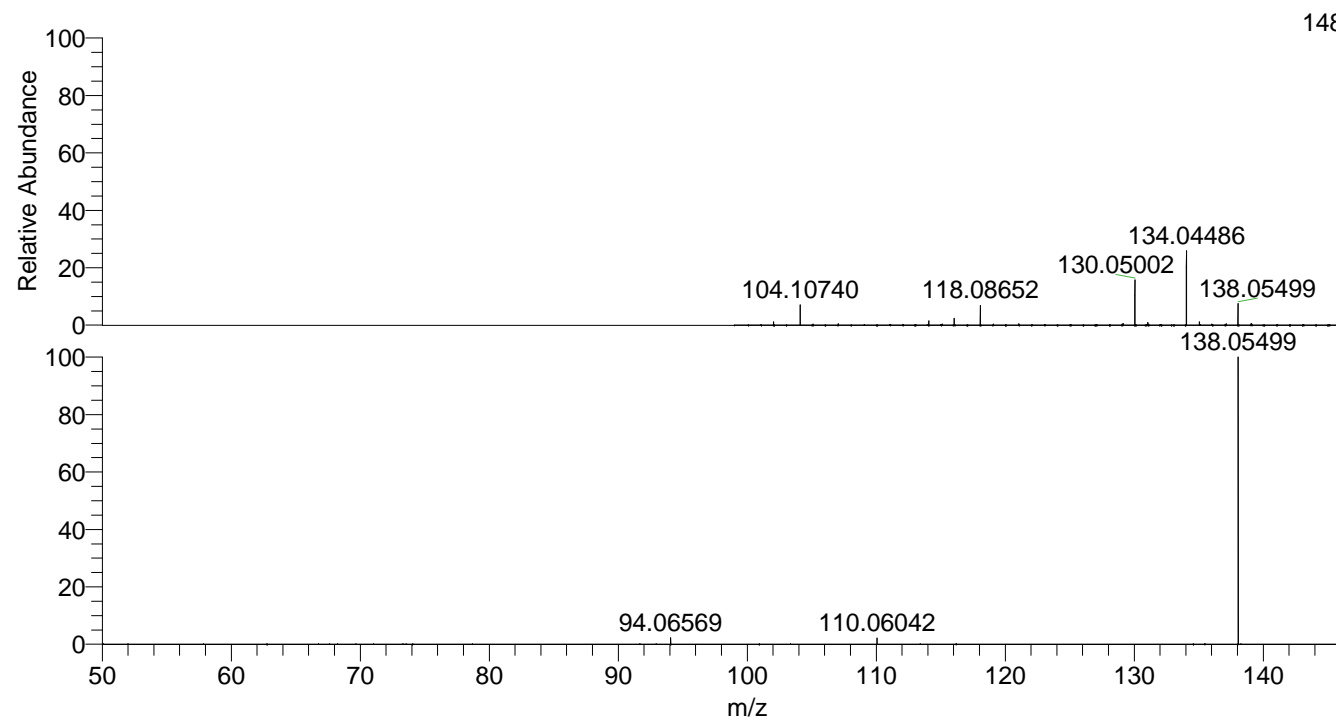
NL: 8.06E7
 Base Peak m/z=
 100.00000-1500.00000 F: FTMS +
 p ESI Full ms [100.00-1500.00]
 MS Ptristis

NL: 9.14E5
 Base Peak m/z=
 138.05481-138.05619 F: FTMS +
 p ESI Full ms [100.00-1500.00]
 MS Ptristis

NL: 6.93E5
 Base Peak m/z=
 50.00000-1500.00000 F: FTMS +
 p ESI d Full ms2
 138.05@hcd35.00 [50.00-160.00]
 MS Ptristis

Ptristis#485-498 RT: 1.21-1.24 AV: 3
 F: FTMS + p ESI d Full ms2 138.05 ...
 m/z= 50.00000-1000.00000

m/z	Intensity	Relative
94.06569	9188.0	2.29
110.06042	8598.5	2.15
138.05499	400481.9	100.00



NL: 1.19E7
 Ptristis#481 RT: 1.20
 AV: 1 T: FTMS + p ESI
 Full lock ms
 [100.00-1500.00]

NL: 3.93E5
 Ptristis#479-511 RT:
 1.21-1.24 AV: 3 F: FTMS
 + p ESI d Full ms2
 138.05@hcd35.00
 [50.00-160.00]