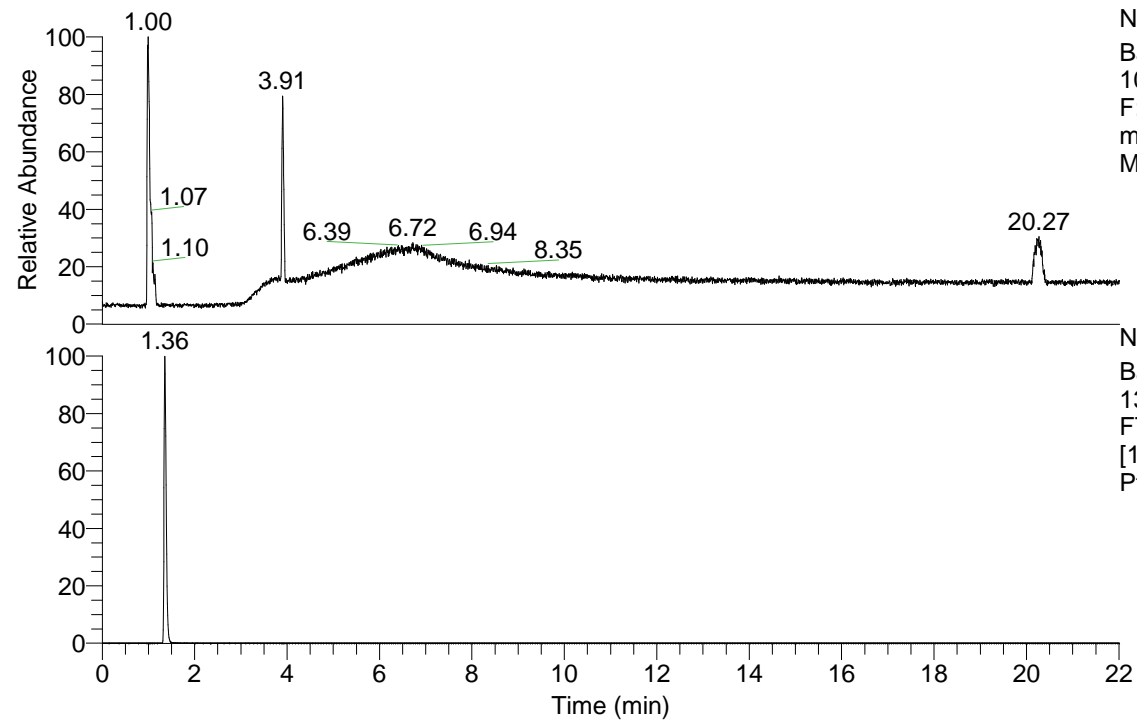


RT: 0.00 - 22.01

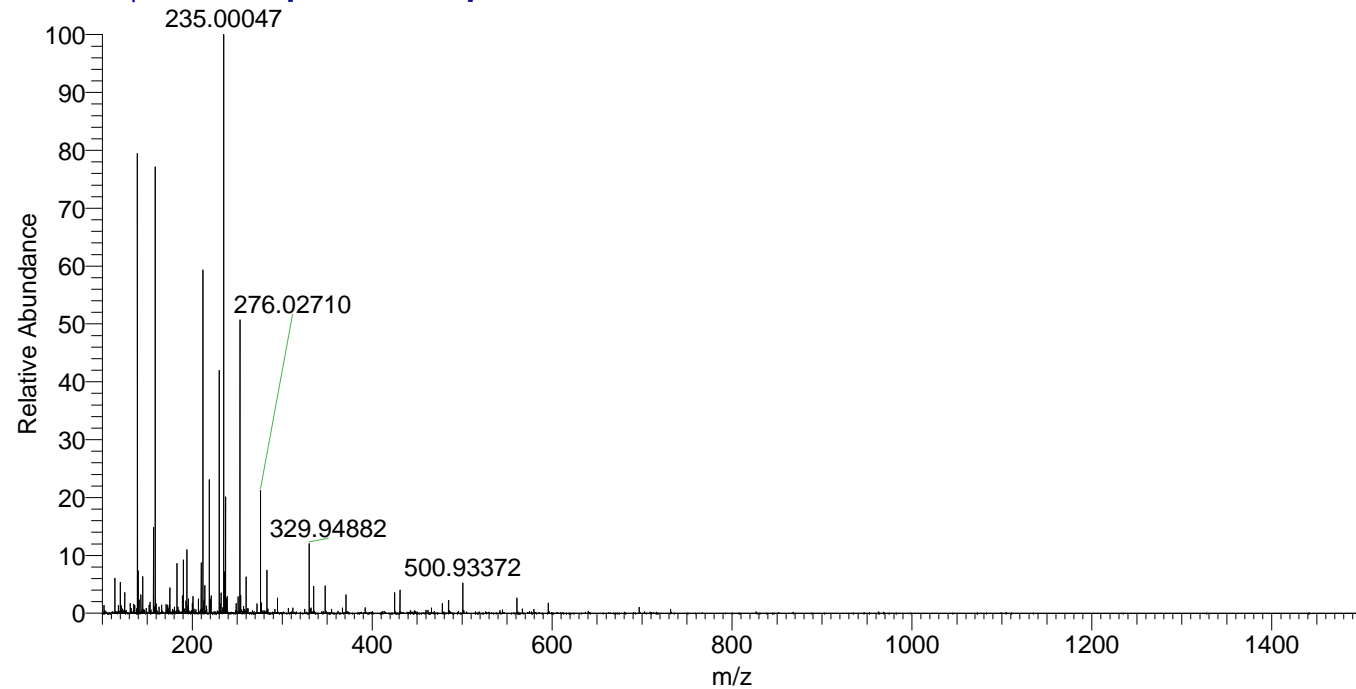


NL: 1.22E8
Base Peak m/z=
100.00000-1500.00000
F: FTMS + p ESI Full
ms [100.00-1500.00]
MS Ptristis_HDX

Ptristis_HDX#209 RT: 1.36
T: FTMS + p ESI Full ms [100.00-1500.00]
m/z= 139.00000-140.00000

m/z	Intensity	Relative	Delta (ppm)	Composition
139.09479	6455888.0	100.00	1.92	C ₈ H ₇ ² H ₃ ON

Ptristis_HDX #209 RT: 1.36 AV: 1 NL: 7.90E6
T: FTMS + p ESI Full ms [100.00-1500.00]



Ptristis_HDX #209 RT: 1.36 AV: 1 NL: 6.28E6
T: FTMS + p ESI Full ms [100.00-1500.00]

