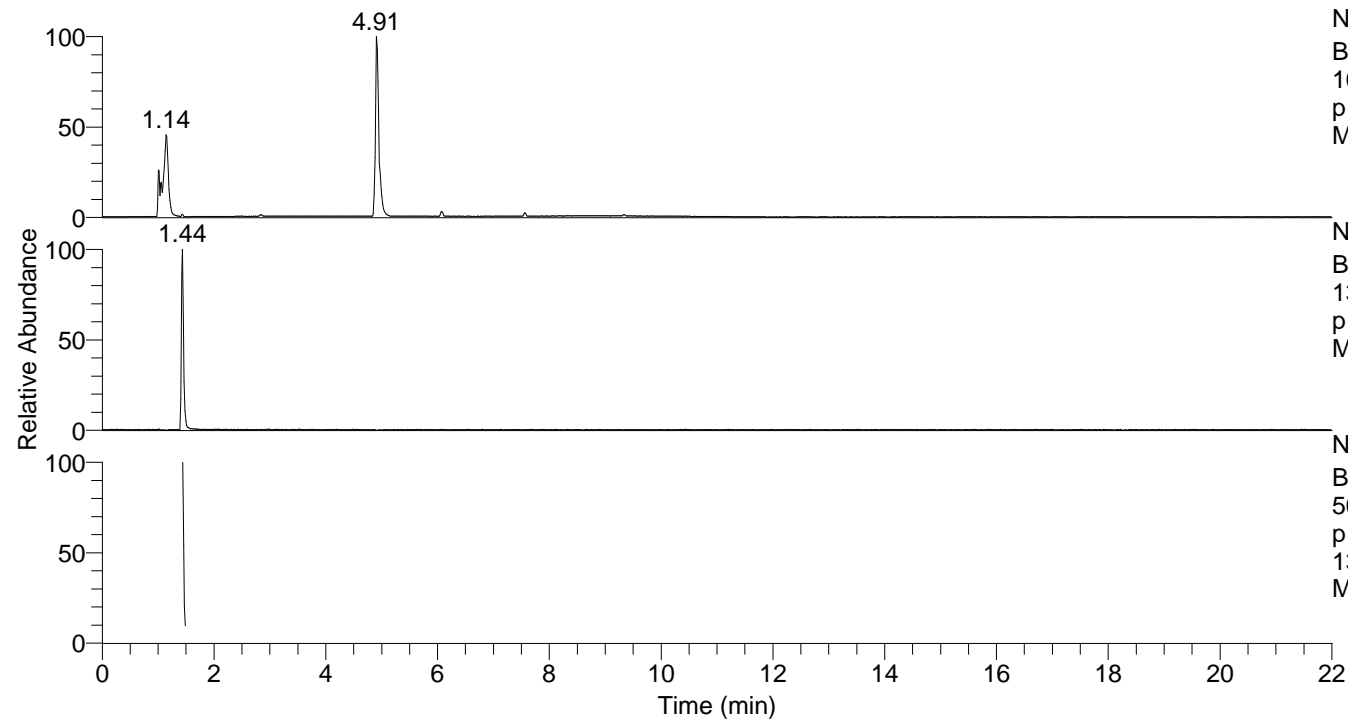


RT: 0.00 - 22.00



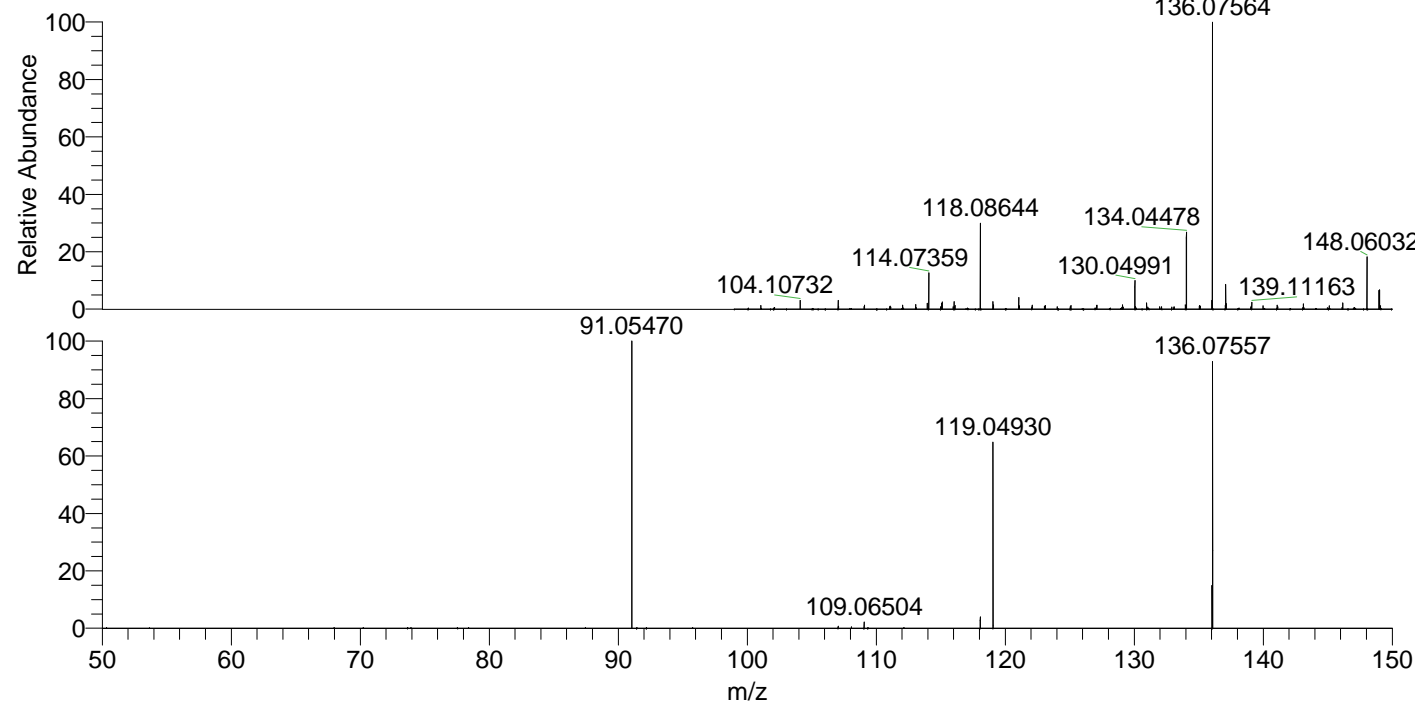
NL: 8.06E7
 Base Peak m/z=
 100.00000-1500.00000 F: FTMS +
 p ESI Full ms [100.00-1500.00]
 MS Ppristis

NL: 1.56E6
 Base Peak m/z=
 136.07555-136.07691 F: FTMS +
 p ESI Full ms [100.00-1500.00]
 MS Ppristis

NL: 4.66E5
 Base Peak m/z=
 50.00000-1500.00000 F: FTMS +
 p ESI d Full ms2
 136.08@hcd35.00 [50.00-155.00]
 MS Ppristis

Ppristis#578-590 RT: 1.44-1.47 AV: 3
 F: FTMS + p ESI d Full ms2 136.08 ...
 m/z= 50.00000-1000.00000

m/z	Intensity	Relative
91.05470	262651.4	100.00
107.04941	1759.4	0.67
109.06504	5930.5	2.26
118.06523	10655.9	4.06
119.04930	169618.2	64.58
136.02163	40425.8	15.39
136.07557	247077.2	94.07



NL: 1.49E6
 Ppristis#577 RT: 1.44
 AV: 1 T: FTMS + p ESI
 Full lock ms
 [100.00-1500.00]

NL: 2.61E5
 Ppristis#570-594 RT:
 1.44-1.47 AV: 3 F: FTMS
 + p ESI d Full ms2
 136.08@hcd35.00
 [50.00-155.00]