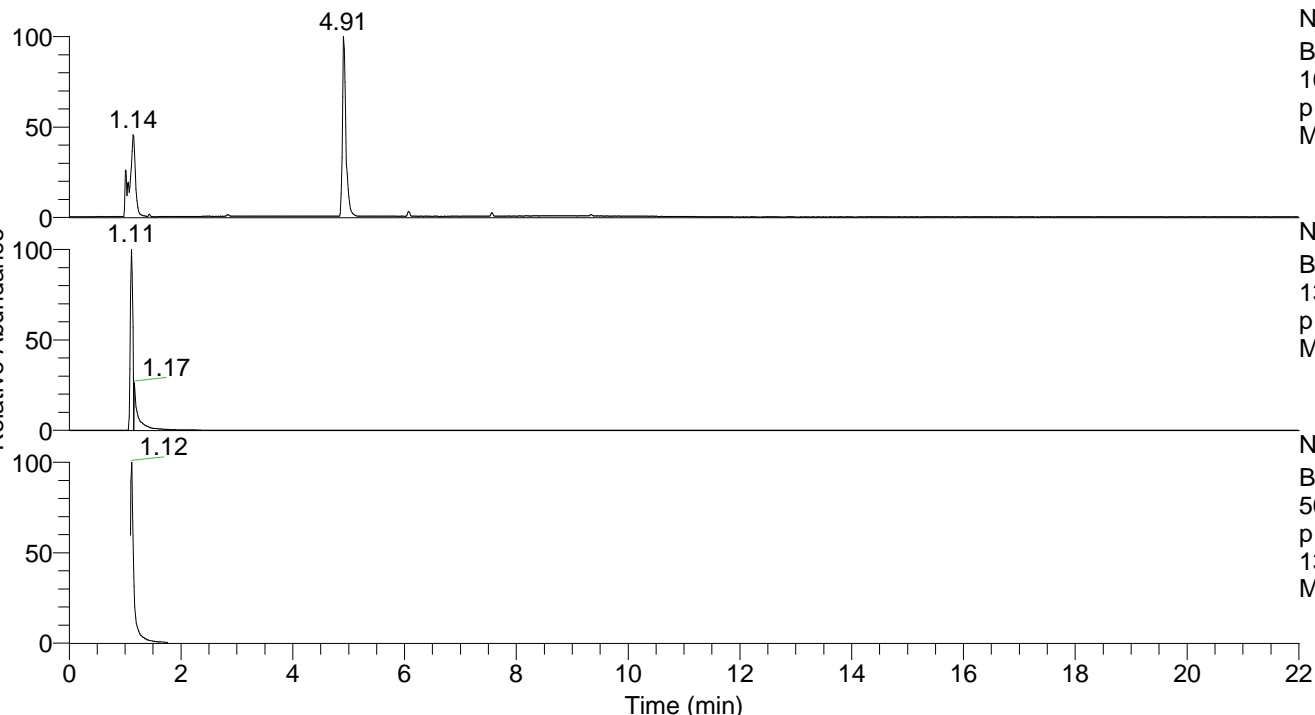


RT: 0.00 - 22.00



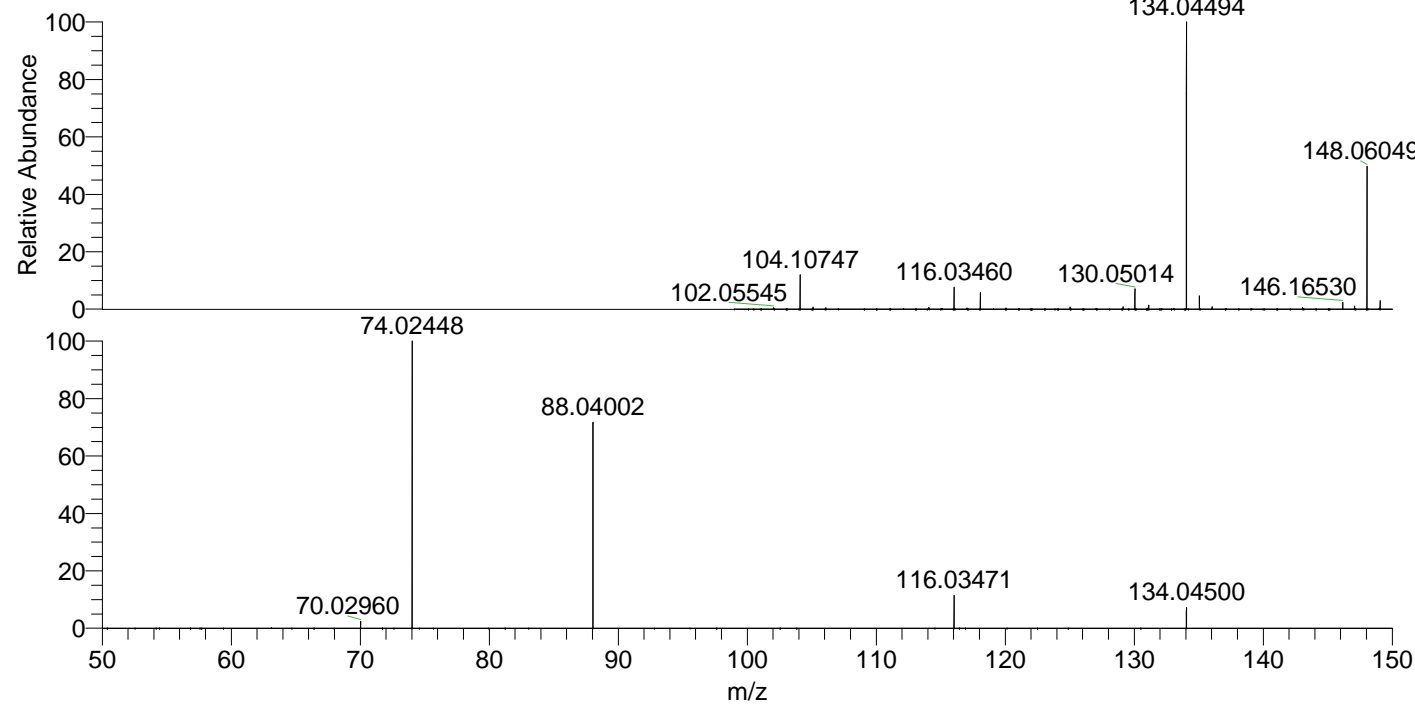
NL: 8.06E7  
 Base Peak m/z=  
 100.00000-1500.00000 F: FTMS +  
 p ESI Full ms [100.00-1500.00]  
 MS Ptristis

NL: 2.37E7  
 Base Peak m/z=  
 134.04466-134.04600 F: FTMS +  
 p ESI Full ms [100.00-1500.00]  
 MS Ptristis

NL: 9.93E6  
 Base Peak m/z=  
 50.00000-1500.00000 F: FTMS +  
 p ESI d Full ms2  
 134.04@hcd35.00 [50.00-155.00]  
 MS Ptristis

Ptristis#437-465 RT: 1.09-1.16 AV: 6  
 F: FTMS + p ESI d Full ms2 134.04@h ...  
 m/z= 50.00000-1000.00000

m/z	Intensity	Relative
70.02957	150461.1	2.29
74.02444	6582297.5	100.00
88.04002	4955114.0	75.28
116.03469	749583.3	11.39
134.04498	479366.8	7.28



NL: 2.36E7  
 Ptristis#445 RT: 1.11  
 AV: 1 T: FTMS + p ESI  
 Full ms [100.00-1500.00]

NL: 7.53E6  
 Ptristis#438-463 RT:  
 1.10-1.15 AV: 4 F: FTMS  
 + p ESI d Full ms2  
 134.04@hcd35.00  
 [50.00-155.00]