

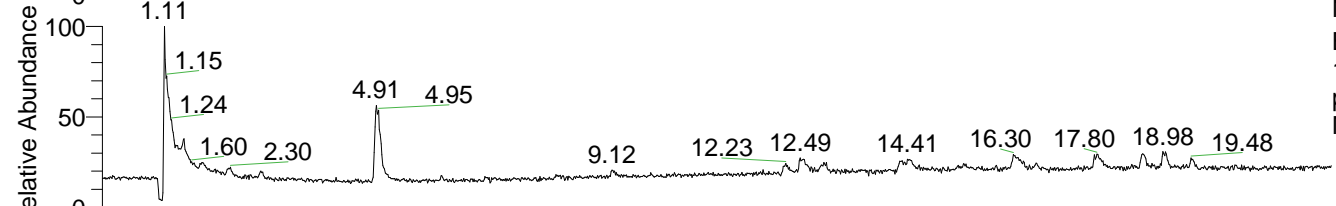
RT: 0.00 - 22.00



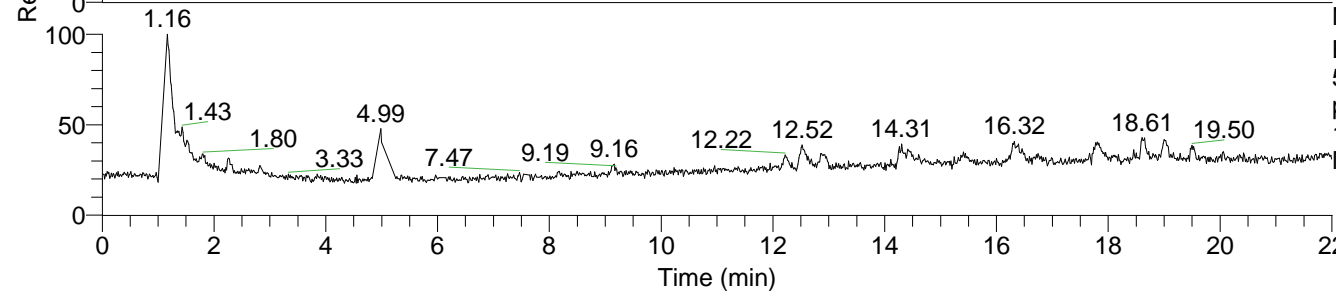
NL: 8.06E7
 Base Peak m/z=
 100.00000-1500.00000 F: FTMS +
 p ESI Full ms [100.00-1500.00]
 MS Ptristis

Ptristis#468-474 RT: 1.16-1.18 AV: 2
 F: FTMS + p ESI d Full ms2 118.09 ...
 m/z= 50.00000-1000.00000

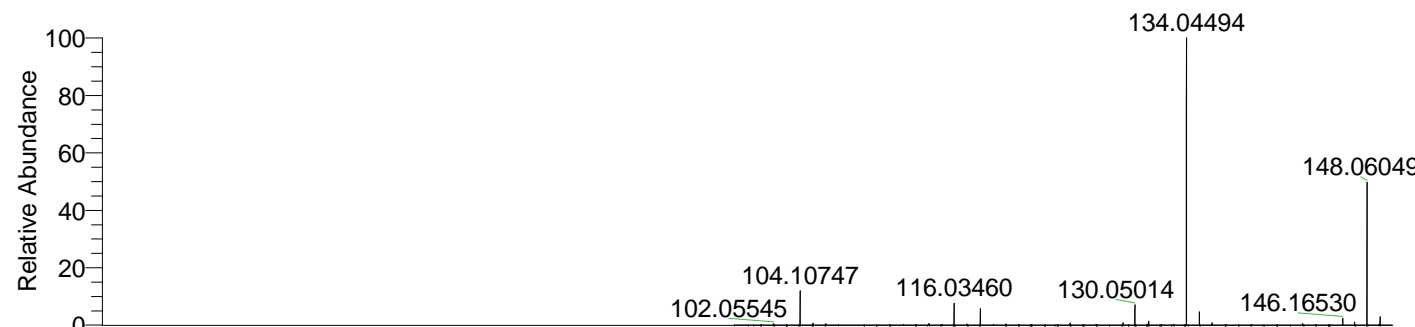
m/z	Intensity	Relative
58.06595	50743.8	5.75
59.07375	51763.3	5.87
118.08645	881773.1	100.00



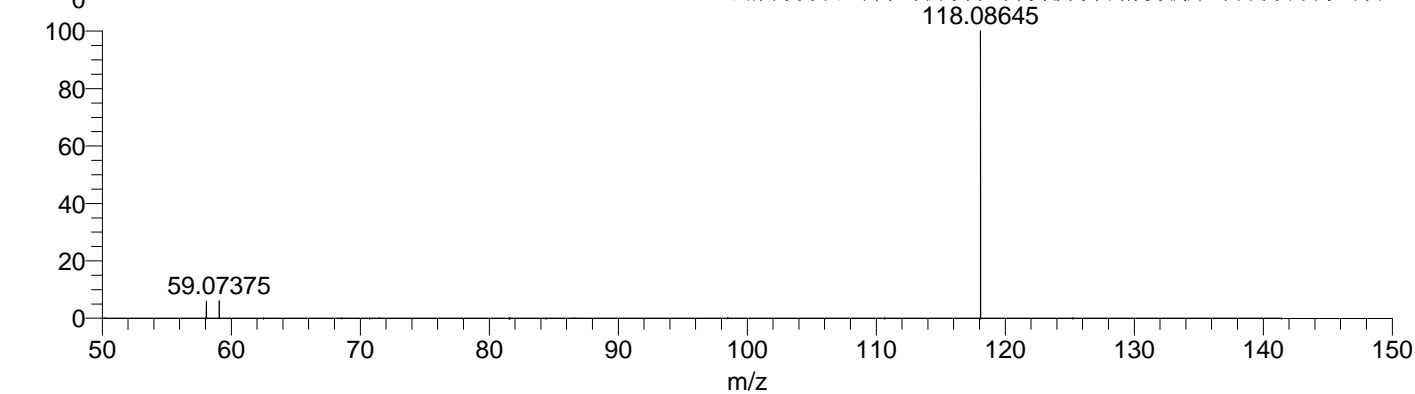
NL: 1.34E6
 Base Peak m/z=
 118.08621-118.08739 F: FTMS +
 p ESI Full ms [100.00-1500.00]
 MS Ptristis



NL: 9.77E5
 Base Peak m/z=
 50.00000-1500.00000 F: FTMS +
 p ESI d Full ms2
 118.09@hcd35.00 [50.00-140.00]
 MS Ptristis



NL: 2.36E7
 Ptristis#445 RT: 1.11
 AV: 1 T: FTMS + p ESI
 Full ms [100.00-1500.00]



NL: 8.51E5
 Ptristis#457-479 RT:
 1.16-1.18 AV: 2 F: FTMS
 + p ESI d Full ms2
 118.09@hcd35.00
 [50.00-140.00]