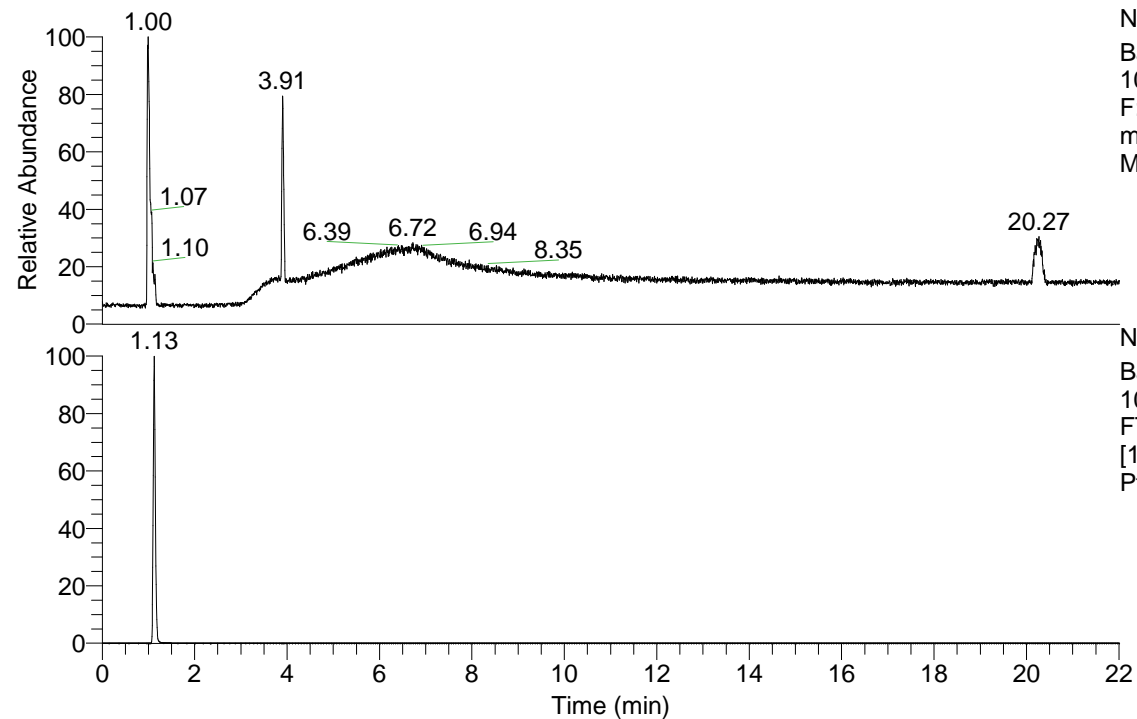


RT: 0.00 - 22.01

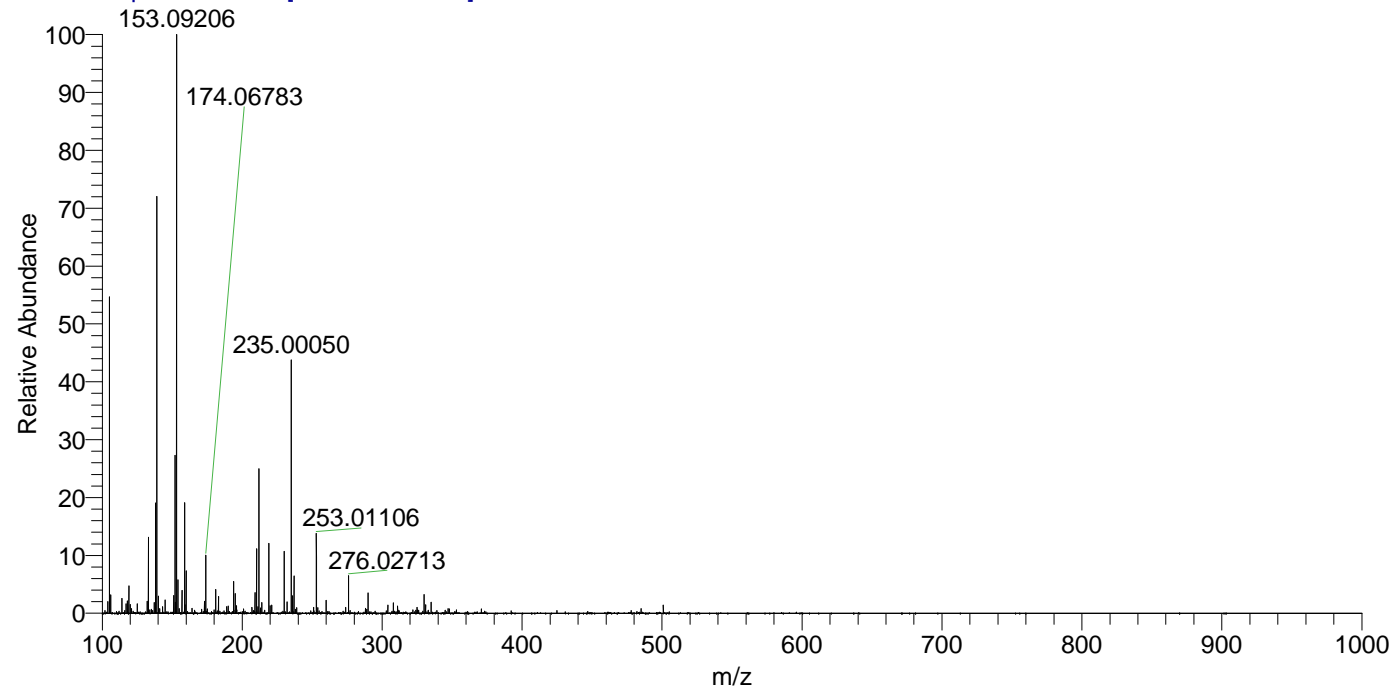


NL: 1.22E8  
 Base Peak m/z= 100.00000-1500.00000  
 F: FTMS + p ESI Full ms [100.00-1500.00]  
 MS Ptristis\_HDX

Ptristis\_HDX#173 RT: 1.13  
 T: FTMS + p ESI Full ms [100.00-1500.00]  
 m/z= 105.00000-106.00000

m/z	Intensity	Relative	Delta (ppm)	Composition
105.11385	9940743.0	100.00	5.58	C <sub>5</sub> H <sub>13</sub> <sup>2</sup> H O N
			-9.15	C <sub>5</sub> H <sub>15</sub> O N

Ptristis\_HDX #173 RT: 1.13 AV: 1 NL: 1.80E7  
 T: FTMS + p ESI Full ms [100.00-1500.00]



NL: 9.94E6  
 Base Peak m/z= 105.11329-105.11435 F:  
 FTMS + p ESI Full ms [100.00-1500.00] MS  
 Ptristis\_HDX

Ptristis\_HDX #173 RT: 1.13 AV: 1 NL: 9.84E6  
 T: FTMS + p ESI Full ms [100.00-1500.00]

