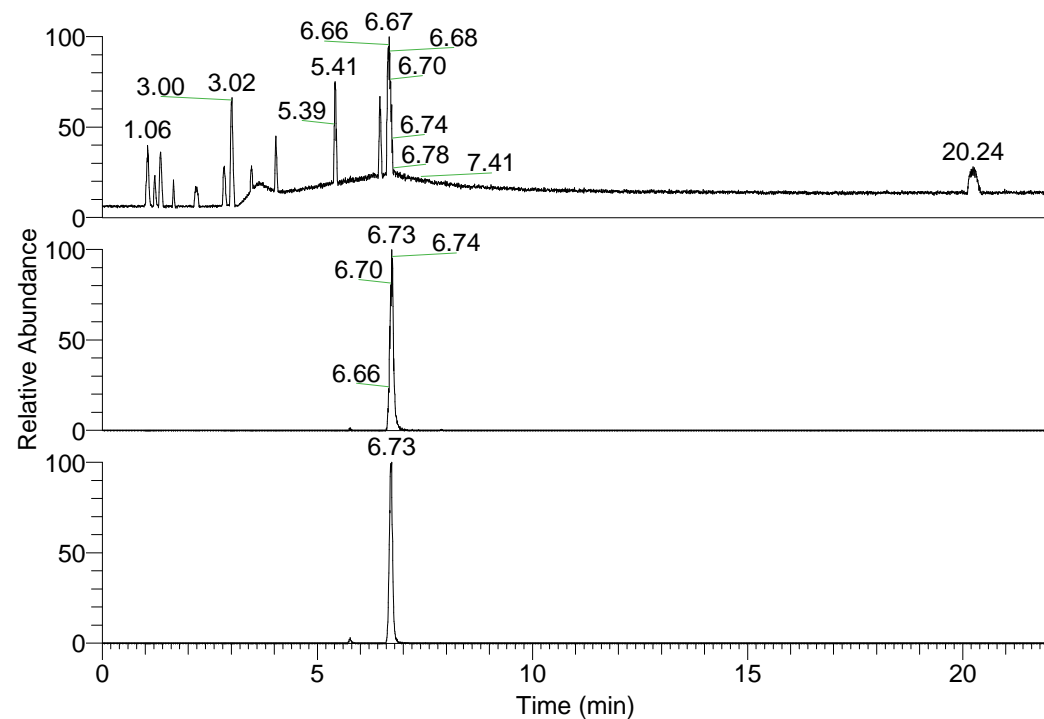


RT: 0.00 - 22.01



NL: 1.25E8  
 Base Peak m/z=  
 100.00000-1500.00000 F:  
 FTMS + p ESI Full ms  
 [100.00-1500.00] MS  
 Pluctuosa\_HDX

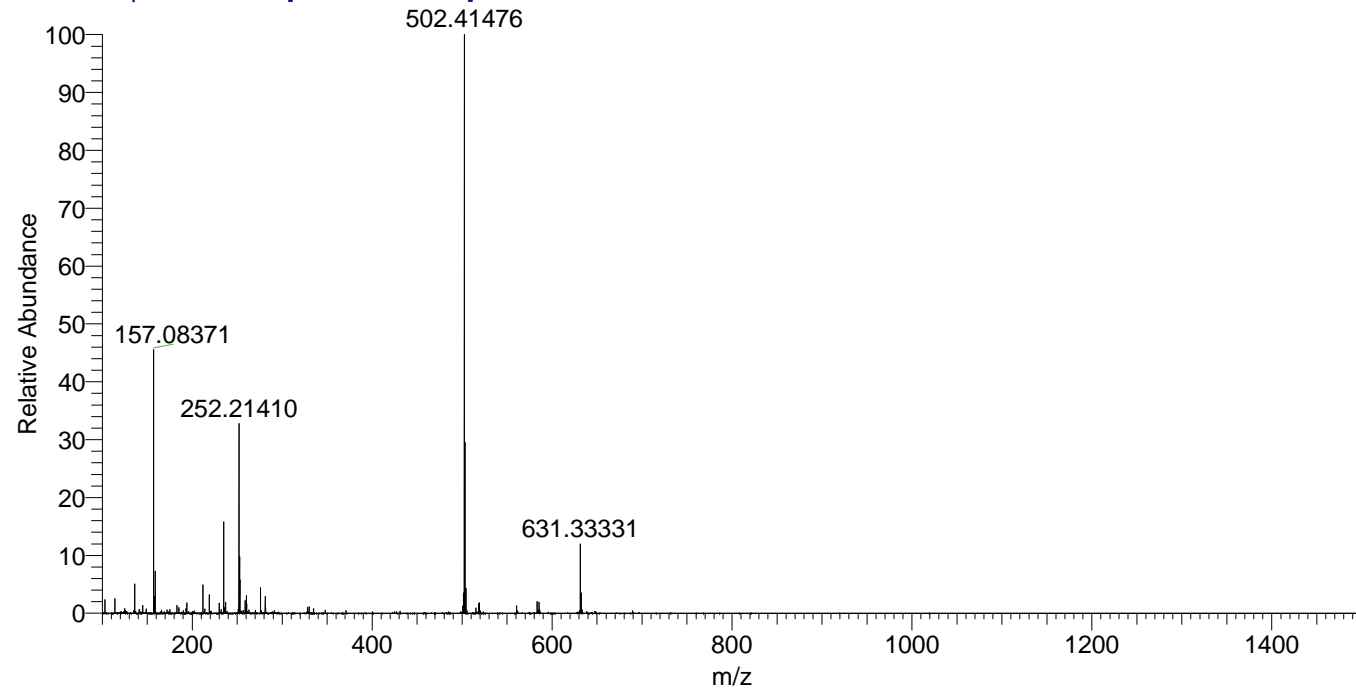
NL: 9.37E5  
 Base Peak m/z=  
 560.47619-560.48179 F:  
 FTMS + p ESI Full ms  
 [100.00-1500.00] MS  
 Pluctuosa\_HDX

NL: 2.19E6  
 Base Peak m/z=  
 281.24513-281.24795 F:  
 FTMS + p ESI Full ms  
 [100.00-1500.00] MS  
 Pluctuosa\_HDX

Pluctuosa\_HDX#1079 RT: 6.73  
 T: FTMS + p ESI Full ms [100.00-1500.00]  
 m/z= 560.00000-561.00000

| m/z       | Intensity | Relative | Delta (ppm) | Composition  |
|-----------|-----------|----------|-------------|--|
| 560.47882 | 778069.8  | 100.00   | 0.69        | C <sub>27</sub> H <sub>38</sub> <sup>2</sup> H <sub>12</sub> O <sub>3</sub> N <sub>9</sub> |
|           |           |          | -2.07       | C <sub>27</sub> H <sub>40</sub> <sup>2</sup> H <sub>11</sub> O <sub>3</sub> N <sub>9</sub> |
|           |           |          | 3.45        | C <sub>27</sub> H <sub>36</sub> <sup>2</sup> H <sub>13</sub> O <sub>3</sub> N <sub>9</sub> |
|           |           |          | -4.83       | C <sub>27</sub> H <sub>42</sub> <sup>2</sup> H <sub>10</sub> O <sub>3</sub> N <sub>9</sub> |

Pluctuosa\_HDX #1079 RT: 6.73 AV: 1 NL: 6.04E7  
 T: FTMS + p ESI Full ms [100.00-1500.00]



Pluctuosa\_HDX #1079 RT: 6.73 AV: 1 NL: 7.71E5  
 T: FTMS + p ESI Full ms [100.00-1500.00]

