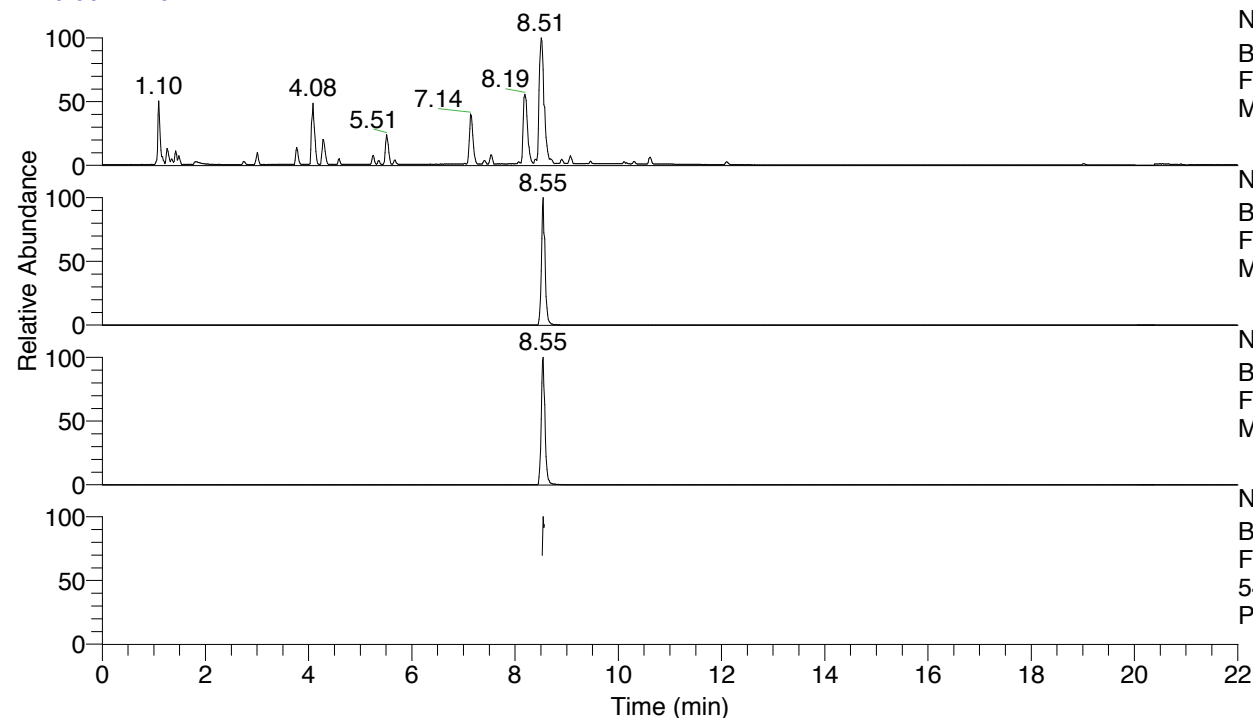


RT: 0.00 - 22.01



NL: 7.88E7
 Base Peak m/z= 100.00000-1500.00000 F:
 FTMS + p ESI Full ms [100.00-1500.00]
 MS Pbirulai

NL: 1.81E6
 Base Peak m/z= 548.40092-548.40640 F:
 FTMS + p ESI Full ms [100.00-1500.00]
 MS Pbirulai

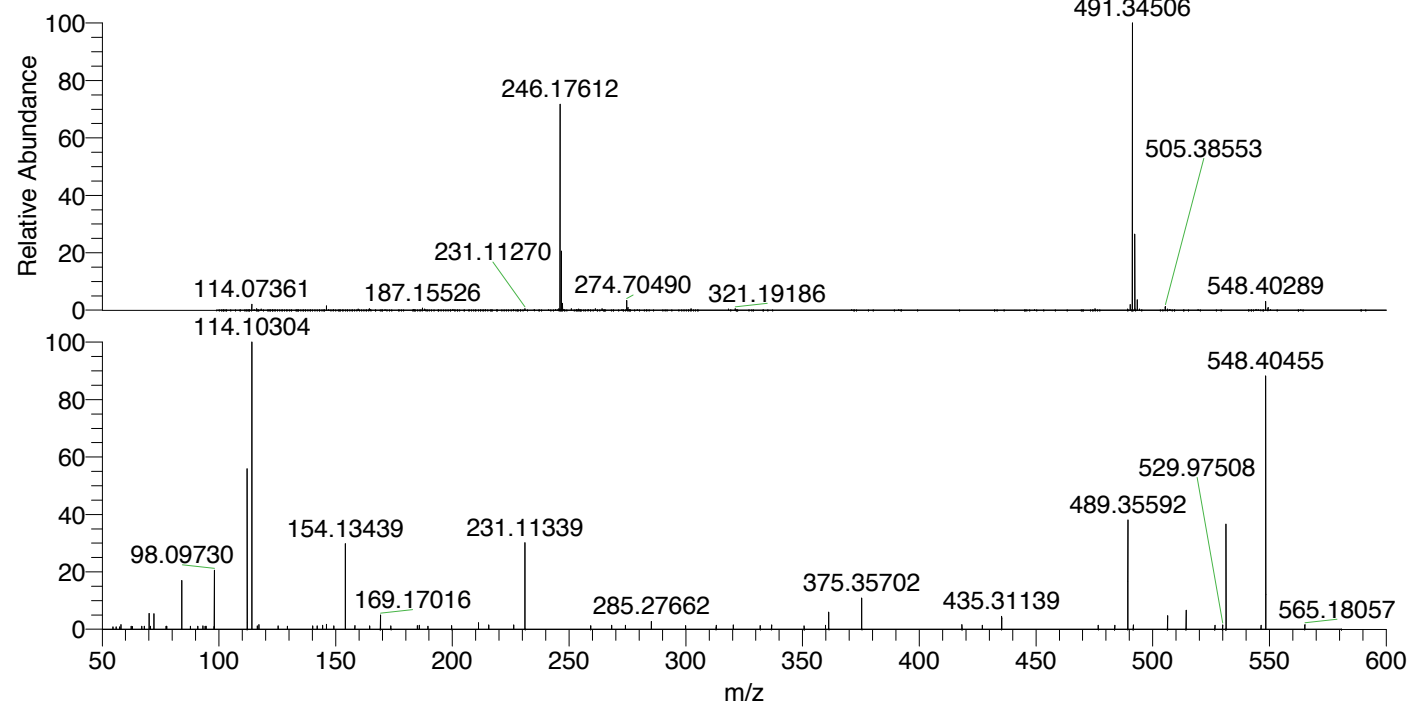
NL: 2.01E6
 Base Peak m/z= 274.70437-274.70711 F:
 FTMS + p ESI Full ms [100.00-1500.00]
 MS Pbirulai

NL: 1.19E5
 Base Peak m/z= 50.00000-1500.00000 F:
 FTMS + p ESI d Full ms2
 548.40@hcd35.00 [50.00-575.00] MS
 Pbirulai

Pbirulai#3413-3431 RT: 8.53-8.57 AV: 4

F: FTMS + p ESI d Full ms2 548.40 ...
 m/z= 50.00000-1000.00000

m/z	Intensity	Relative
58.06602	1584.9	1.62
70.06608	5575.4	5.69
72.08169	5324.0	5.44
84.08164	17234.0	17.60
93.16019	1129.2	1.15
98.09730	20020.4	20.44
112.11269	54443.4	55.59
114.10304	97931.5	100.00
116.48355	1167.1	1.19
117.16611	1533.2	1.57
125.39934	1185.8	1.21
140.11960	1124.8	1.15
144.36679	1347.4	1.38
146.05970	1716.3	1.75
149.16622	1149.1	1.17
154.12339	1252.2	1.28
154.13439	29152.4	29.77
158.20126	1286.9	1.31
169.17016	4880.5	4.98
173.67513	1176.3	1.20
185.04952	1242.7	1.27
185.81692	1357.4	1.39
199.72747	1275.1	1.30
211.19243	2225.0	2.27
215.59822	1449.1	1.48
226.22764	1529.2	1.56
231.11339	29422.8	30.04
259.24884	1213.8	1.24
268.25201	1370.3	1.40
274.10578	1331.4	1.36
285.27662	2715.3	2.77
299.91374	1249.9	1.28
313.00969	1363.5	1.39
320.35431	1497.9	1.53
331.89469	1234.1	1.26
336.73331	1460.4	1.49
350.69150	1182.6	1.21
359.83724	1403.3	1.43
361.22454	5947.8	6.07
375.35702	10584.0	10.81
418.28208	1595.4	1.63
427.01514	1371.8	1.40
435.31139	4349.4	4.44
476.67067	1411.7	1.44
483.74424	1409.5	1.44
489.35592	37015.9	37.80
491.71300	1492.4	1.52
506.38093	4614.6	4.71
514.35328	6551.7	6.69
526.69304	1344.9	1.37
529.97508	1511.2	1.54
531.37765	35648.6	36.40
546.44883	1349.8	1.38
548.40455	85907.0	87.72
565.18057	1580.3	1.61



NL: 5.91E7
 Pbirulai#3421 RT: 8.55
 AV: 1 T: FTMS + p ESI
 Full ms [100.00-1500.00]

NL: 9.73E4
 Pbirulai#3358-3493 RT:
 8.53-8.57 AV: 4 F: FTMS
 + p ESI d Full ms2
 548.40@hcd35.00
 [50.00-575.00]

Pbirulai#3413-3431 RT: 8.53-8.57 AV: 4

F: FTMS + p ESI d Full ms2 548.40@hcd35.00 [50.00-575.00]

m/z= 50.00000-1000.00000

m/z	Intensity	Relative
54.62661	861.6	0.88
56.02553	837.0	0.85
57.53405	841.9	0.86
58.06602	1584.9	1.62
62.43595	982.8	1.00
62.93127	954.5	0.97
66.87228	1087.3	1.11
67.97405	1008.5	1.03
70.06608	5575.4	5.69
70.67699	1024.6	1.05
72.08169	5324.0	5.44
77.31796	1049.1	1.07
77.63500	1078.3	1.10
84.08164	17234.0	17.60
87.79544	1013.5	1.03
90.93142	1039.1	1.06
93.16019	1129.2	1.15
94.07749	1079.0	1.10
94.43597	1043.9	1.07
97.91204	947.4	0.97
98.09730	20020.4	20.44
112.11269	54443.4	55.59
114.10304	97931.5	100.00
116.48355	1167.1	1.19
117.16611	1533.2	1.57
125.39934	1185.8	1.21
129.33535	1068.0	1.09
140.11960	1124.8	1.15
142.05633	1109.1	1.13
144.36679	1347.4	1.38
146.05970	1716.3	1.75
149.16622	1149.1	1.17
154.12339	1252.2	1.28
154.13439	29152.4	29.77
158.20126	1286.9	1.31
164.54399	1112.0	1.14
169.17016	4880.5	4.98
173.67513	1176.3	1.20
185.04952	1242.7	1.27

Pbirulai#3413-3431 RT: 8.53-8.57 AV: 4

F: FTMS + p ESI d Full ms2 548.40@hcd35.00 [50.00-575.00]

m/z= 50.00000-1000.00000

m/z	Intensity	Relative
185.81692	1357.4	1.39
189.57392	1109.7	1.13
199.72747	1275.1	1.30
211.19243	2225.0	2.27
215.59822	1449.1	1.48
226.22764	1529.2	1.56
231.11339	29422.8	30.04
259.24884	1213.8	1.24
268.25201	1370.3	1.40
274.10578	1331.4	1.36
285.27662	2715.3	2.77
299.91374	1249.9	1.28
313.00969	1363.5	1.39
320.35431	1497.9	1.53
331.89469	1234.1	1.26
336.73331	1460.4	1.49
350.69150	1182.6	1.21
359.83724	1403.3	1.43
361.22454	5947.8	6.07
375.35702	10584.0	10.81
418.28208	1595.4	1.63
427.01514	1371.8	1.40
435.31139	4349.4	4.44
476.67067	1411.7	1.44
483.74424	1409.5	1.44
489.35592	37015.9	37.80
491.71300	1492.4	1.52
506.38093	4614.6	4.71
514.35328	6551.7	6.69
526.69304	1344.9	1.37
529.97508	1511.2	1.54
531.37765	35648.6	36.40
546.44883	1349.8	1.38
548.40455	85907.0	87.72
565.18057	1580.3	1.61