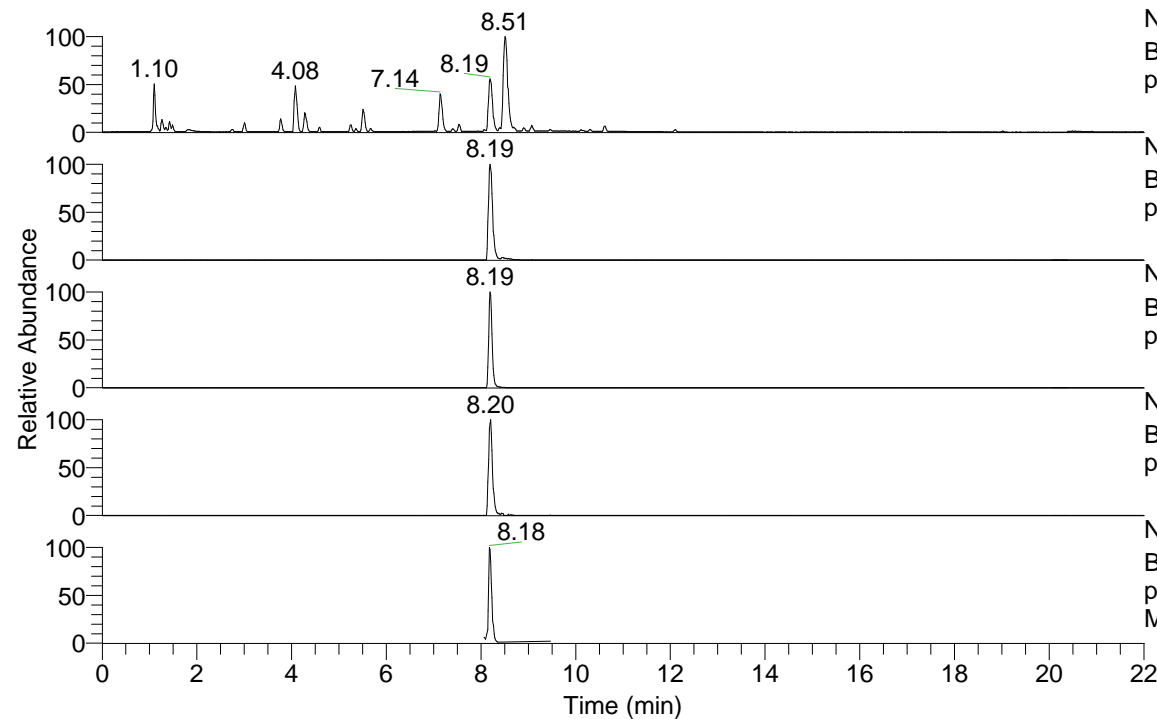


RT: 0.00 - 22.01



NL: 7.88E7
 Base Peak m/z= 100.00000-1500.00000 F: FTMS + p ESI Full ms [100.00-1500.00] MS Pbirulai

NL: 4.41E7
 Base Peak m/z= 505.38408-505.38914 F: FTMS + p ESI Full ms [100.00-1500.00] MS Pbirulai

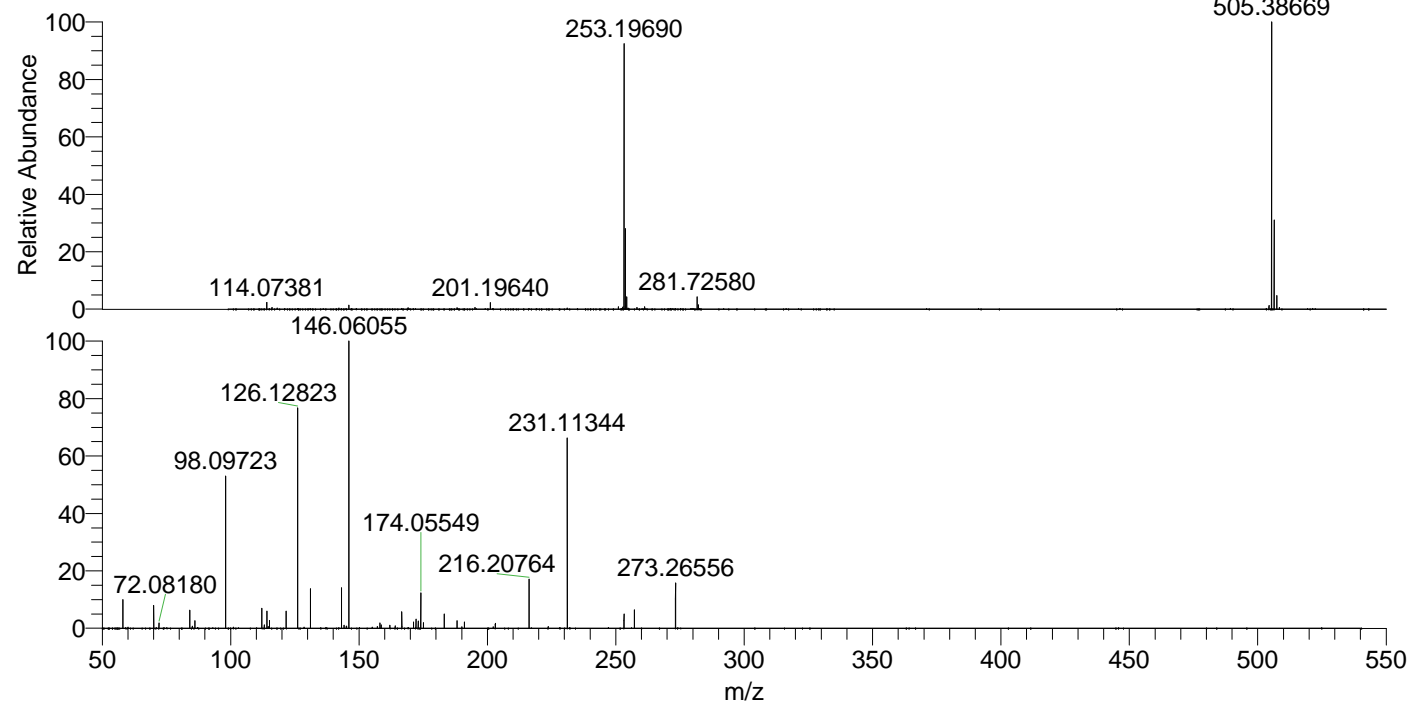
NL: 4.24E7
 Base Peak m/z= 253.19595-253.19849 F: FTMS + p ESI Full ms [100.00-1500.00] MS Pbirulai

NL: 7.03E5
 Base Peak m/z= 619.37638-619.38258 F: FTMS + p ESI Full ms [100.00-1500.00] MS Pbirulai

NL: 6.00E6
 Base Peak m/z= 50.00000-1500.00000 F: FTMS + p ESI Full ms2 253.18@hcd35.00 [50.00-535.00] MS Pbirulai

Pbirulai#3251-3297 RT: 8.14-8.25 AV: 9
 F: FTMS + p ESI d Full ms2 253.18@hcd35.00 [50.00-535.00] MS Pbirulai
 m/z= 50.00000-1000.00000

m/z	Intensity	Relative
58.06616	333034.5	9.90
70.06607	265854.4	7.90
72.08179	63268.3	1.88
84.08166	209980.5	6.24
85.07694	24722.0	0.73
86.06096	81840.1	2.43
86.09734	91695.3	2.73
98.09725	1798176.6	53.45
112.11276	233052.6	6.93
113.10801	36984.2	1.10
114.09213	205979.3	6.12
114.12835	20863.8	0.62
114.62617	21480.7	0.64
115.12368	89210.2	2.65
121.63385	200599.9	5.96
126.12823	2506732.8	74.51
131.11833	452391.3	13.45
143.15472	459708.3	13.66
144.14431	37121.6	1.10
145.05271	23534.2	0.70
145.17053	23404.5	0.70
146.06054	3364448.0	100.00
157.17061	20395.5	0.61
158.16048	59617.2	1.77
158.67613	38773.0	1.15
162.05566	34225.9	1.02
164.07120	28572.1	0.85
166.67354	198817.5	5.91
171.18637	72172.8	2.15
172.18153	105615.9	3.14
173.04826	87172.9	2.59
174.05545	398633.2	11.85
175.08742	68138.5	2.03
183.18635	166405.6	4.95
188.17654	88091.6	2.62
191.05872	73431.4	2.18
191.08200	54288.7	1.61
202.22828	17810.7	0.53
203.08242	60138.7	1.79
216.20771	558700.6	16.61
223.66034	18716.6	0.56
231.11336	2148424.8	63.86
253.19746	164768.7	4.90
257.27060	214300.6	6.37
273.26571	534385.9	15.88



NL: 4.33E7
 Pbirulai#3271 RT: 8.19
 AV: 1 T: FTMS + p ESI Full ms [100.00-1500.00]

NL: 3.62E6
 Pbirulai#3253-3297 RT: 8.15-8.25 AV: 8 F: FTMS + p ESI d Full ms2 253.18@hcd35.00 [50.00-535.00]