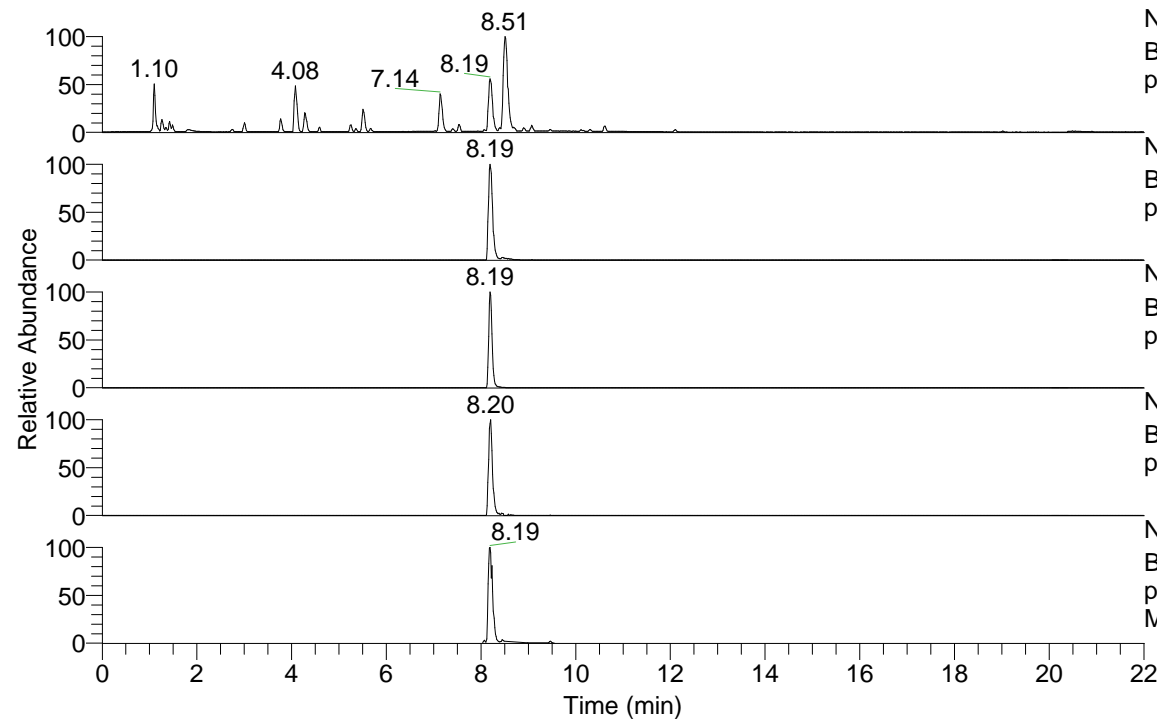


RT: 0.00 - 22.01



NL: 7.88E7
 Base Peak m/z= 100.00000-1500.00000 F: FTMS +
 p ESI Full ms [100.00-1500.00] MS Pbirulai

NL: 4.41E7
 Base Peak m/z= 505.38408-505.38914 F: FTMS +
 p ESI Full ms [100.00-1500.00] MS Pbirulai

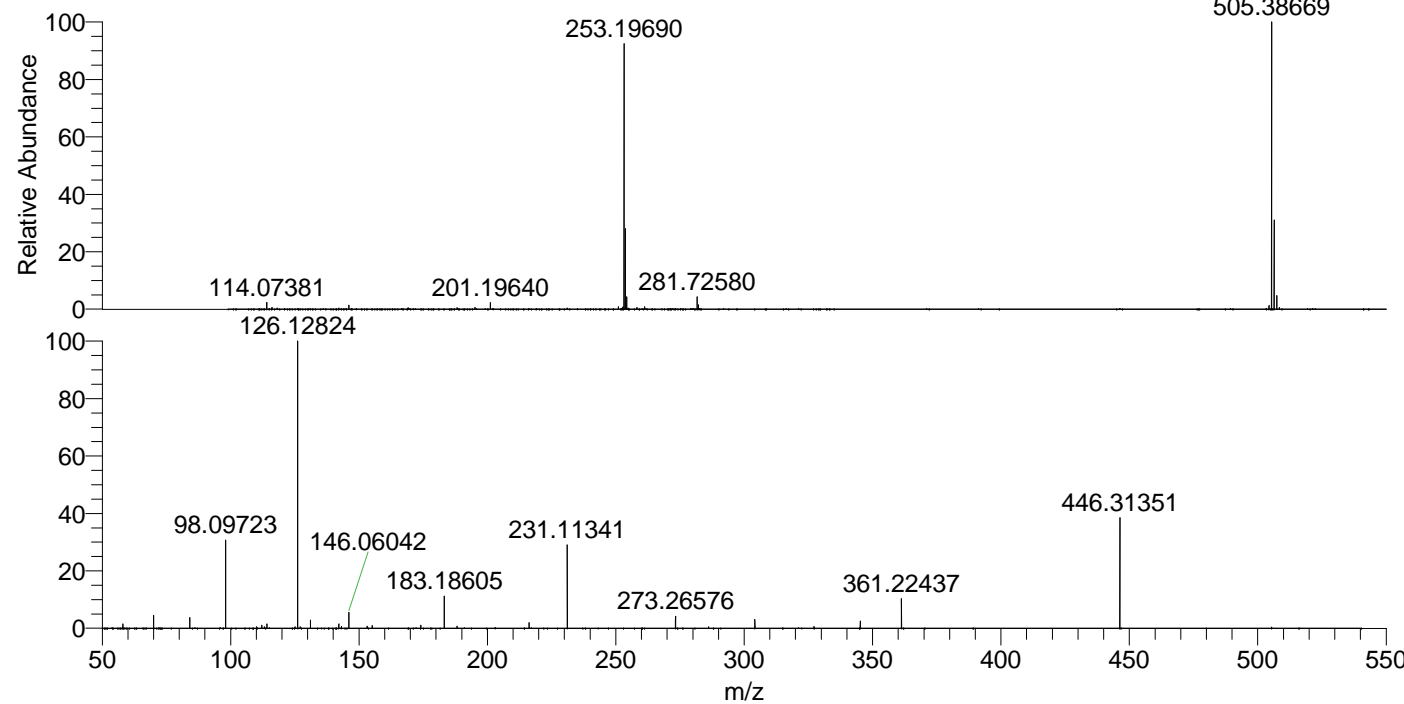
NL: 4.24E7
 Base Peak m/z= 253.19595-253.19849 F: FTMS +
 p ESI Full ms [100.00-1500.00] MS Pbirulai

NL: 7.03E5
 Base Peak m/z= 619.37638-619.38258 F: FTMS +
 p ESI Full ms [100.00-1500.00] MS Pbirulai

NL: 9.37E6
 Base Peak m/z= 50.00000-1500.00000 F: FTMS +
 p ESI Full ms2 505.36@hcd35.00 [50.00-535.00]
 MS Pbirulai

Pbirulai#3250-3302 RT: 8.14-8.26 AV: 10
 F: FTMS + p ESI d Full ms2 505.36@h ...
 m/z= 50.00000-1000.00000

m/z	Intensity	Relative
58.06608	96455.9	1.58
70.06605	282109.7	4.62
84.08164	235786.8	3.86
98.09725	1972015.0	32.27
110.09708	30903.6	0.51
112.11269	72515.8	1.19
114.09200	94076.6	1.54
114.12840	32541.3	0.53
126.12826	6110056.0	100.00
131.11838	173330.7	2.84
142.12302	96901.3	1.59
143.15481	37726.2	0.62
146.06045	349174.7	5.71
153.13916	44781.0	0.73
155.15477	56174.5	0.92
174.05572	65575.7	1.07
183.18616	698100.9	11.43
188.17628	44525.2	0.73
216.20802	122985.8	2.01
231.11337	1765007.5	28.89
273.26589	267725.8	4.38
304.16637	186303.6	3.05
327.21936	33947.2	0.56
345.22957	152099.4	2.49
361.22455	642122.4	10.51
446.31339	2310898.3	37.82



NL: 4.33E7
 Pbirulai#3271 RT: 8.19
 AV: 1 T: FTMS + p ESI
 Full ms [100.00-1500.00]

NL: 7.05E6
 Pbirulai#3252-3297 RT:
 8.15-8.25 AV: 8 F: FTMS
 + p ESI d Full ms2
 505.36@hcd35.00
 [50.00-535.00]