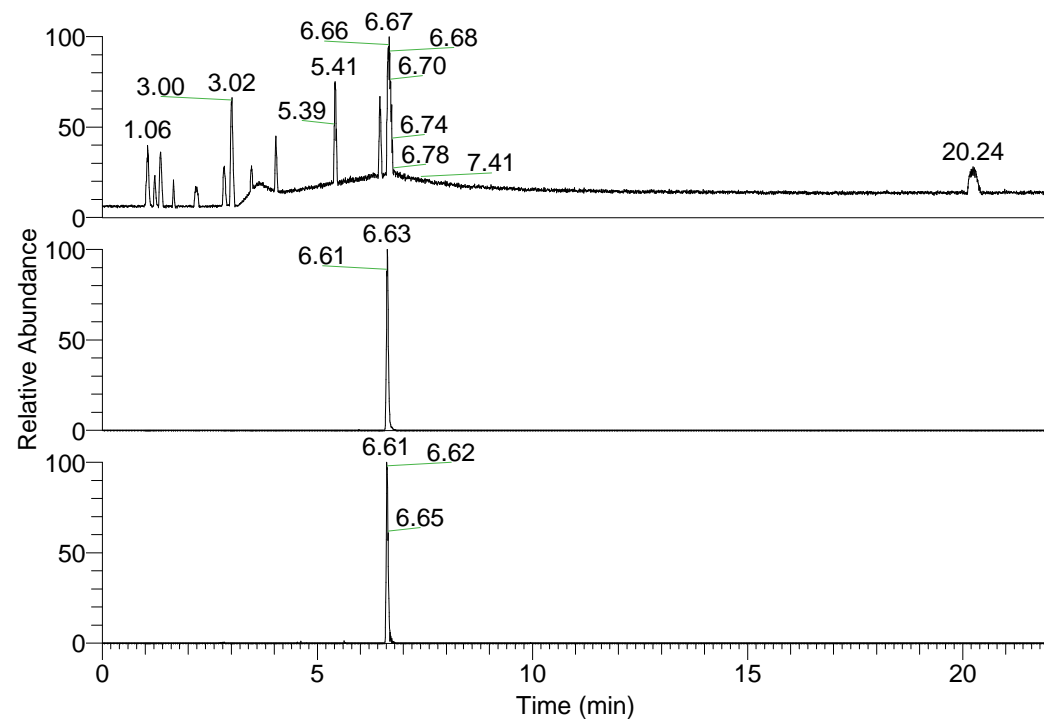


RT: 0.00 - 22.01



NL: 1.25E8
 Base Peak m/z=
 100.00000-1500.00000 F:
 FTMS + p ESI Full ms
 [100.00-1500.00] MS
 Pluctuosa_HDX

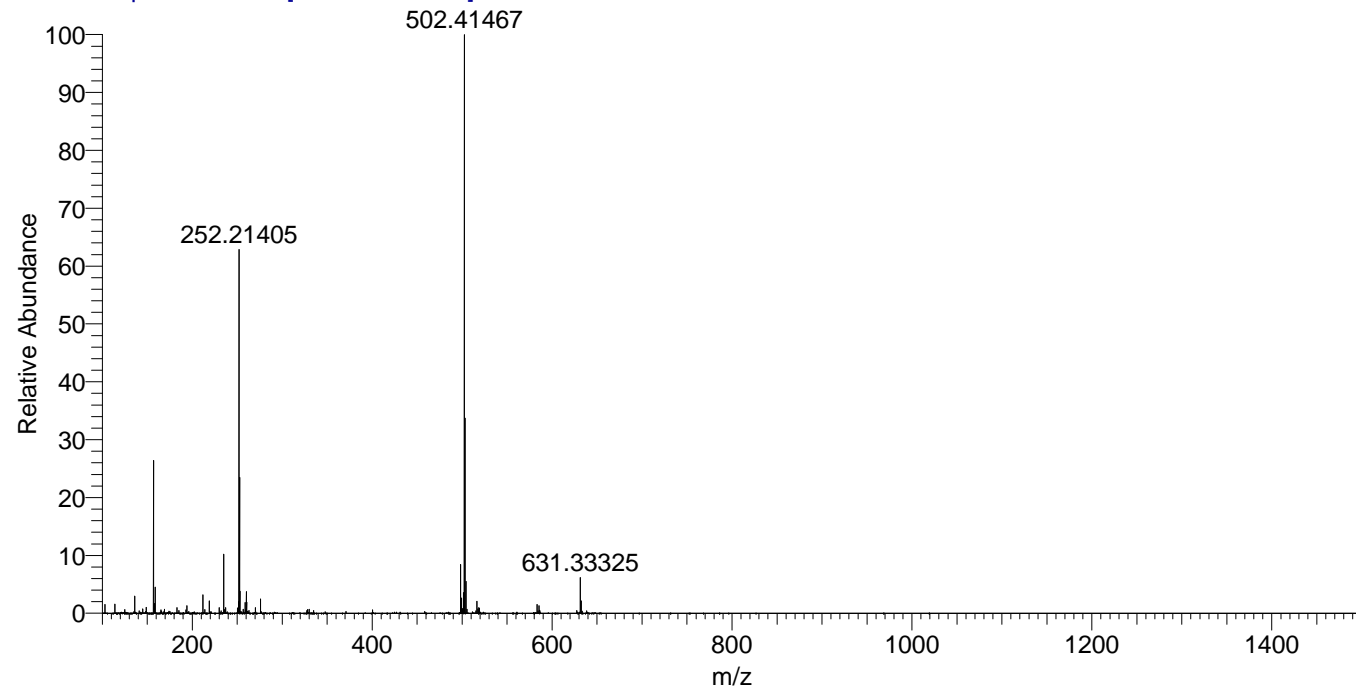
NL: 8.34E6
 Base Peak m/z=
 498.41241-498.41739 F:
 FTMS + p ESI Full ms
 [100.00-1500.00] MS
 Pluctuosa_HDX

NL: 9.48E5
 Base Peak m/z=
 250.21325-250.21575 F:
 FTMS + p ESI Full ms
 [100.00-1500.00] MS
 Pluctuosa_HDX

Pluctuosa_HDX#1060 RT: 6.63
 T: FTMS + p ESI Full ms [100.00-1500.00]
 m/z= 498.00000-499.00000

m/z	Intensity	Relative	Delta (ppm)	Composition
498.41498	8339836.5	100.00	1.25	C ₂₆ H ₄₀ ² H ₇ O ₃ N ₆
			-1.85	C ₂₆ H ₄₂ ² H ₆ O ₃ N ₆
			4.36	C ₂₆ H ₃₈ ² H ₈ O ₃ N ₆
			-4.96	C ₂₆ H ₄₄ ² H ₅ O ₃ N ₆

Pluctuosa_HDX #1060 RT: 6.63 AV: 1 NL: 9.60E7
 T: FTMS + p ESI Full ms [100.00-1500.00]



Pluctuosa_HDX #1060 RT: 6.63 AV: 1 NL: 9.60E7
 T: FTMS + p ESI Full ms [100.00-1500.00]

