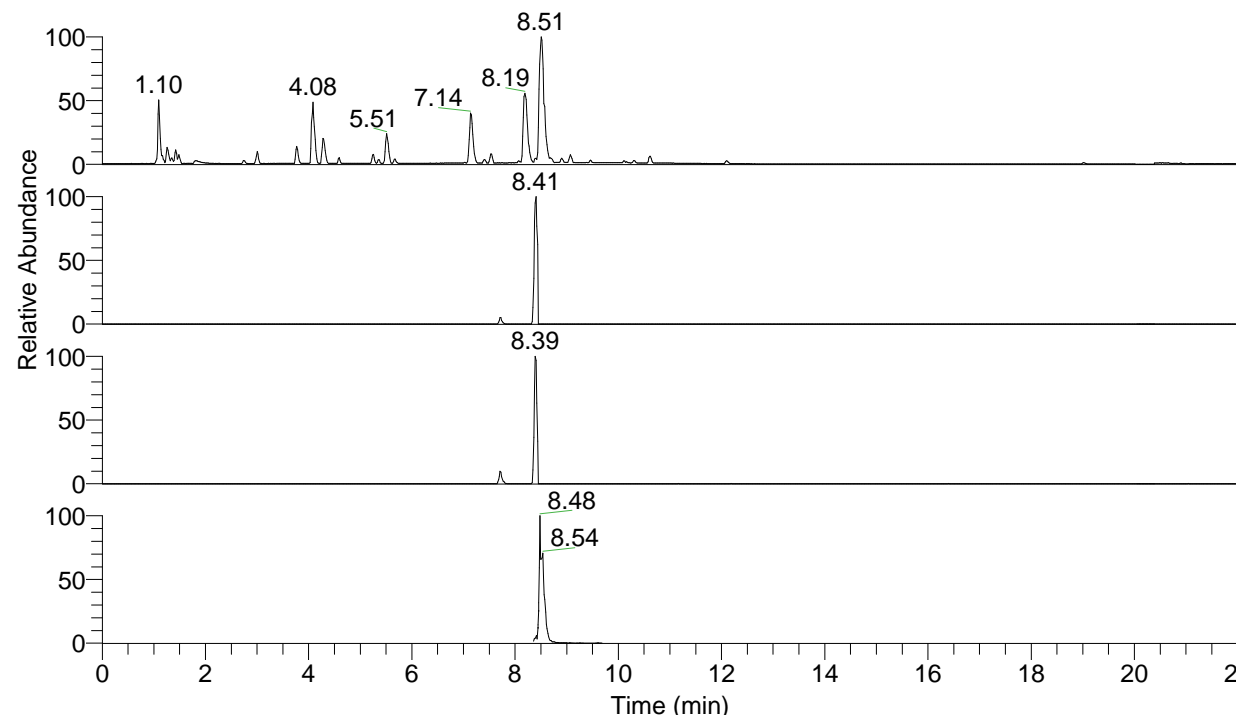


RT: 0.00 - 22.01



NL: 7.88E7
 Base Peak m/z= 100.00000-1500.00000 F:
 FTMS + p ESI Full ms [100.00-1500.00]
 MS Pbirulai

NL: 3.92E6
 Base Peak m/z= 491.36850-491.37342 F:
 FTMS + p ESI Full ms [100.00-1500.00]
 MS Pbirulai

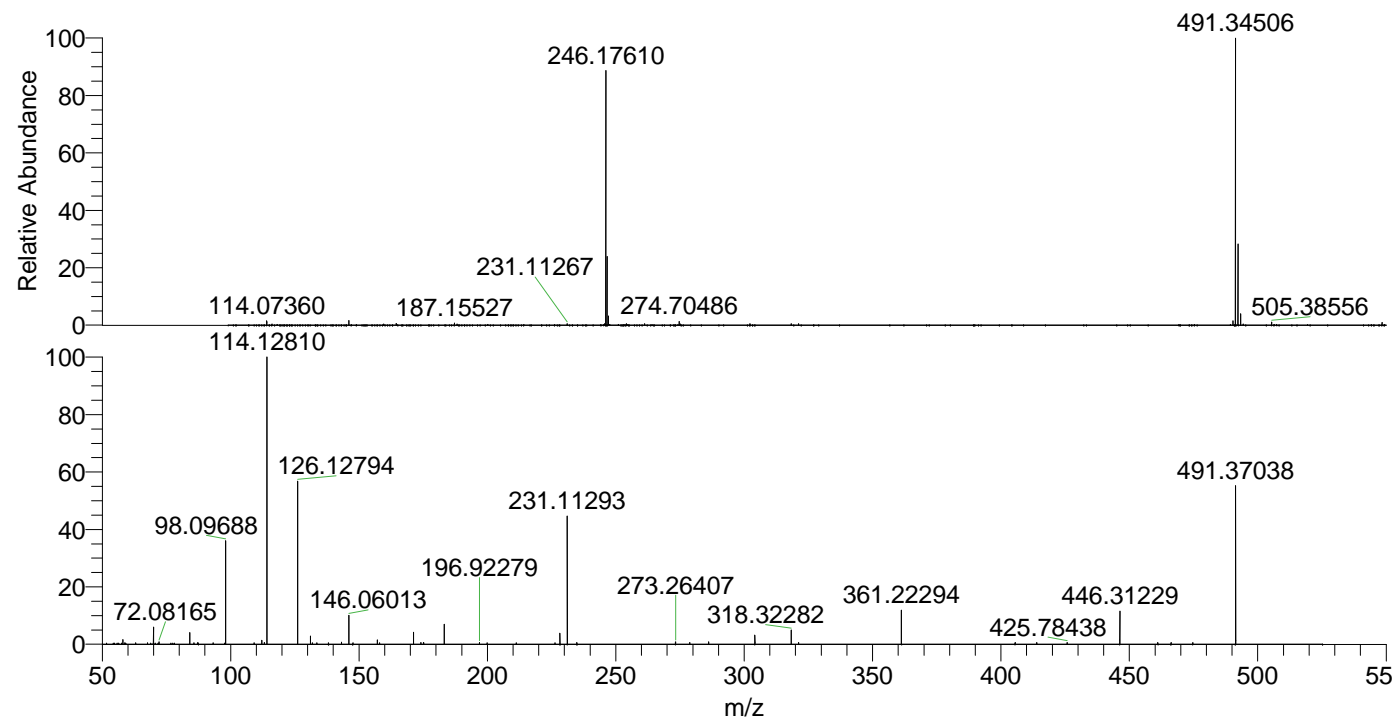
NL: 5.83E5
 Base Peak m/z= 246.18816-246.19062 F:
 FTMS + p ESI Full ms [100.00-1500.00]
 MS Pbirulai

NL: 1.06E7
 Base Peak m/z= 50.00000-1500.00000 F:
 FTMS + p ESI d Full ms2
 491.34@hcd35.00 [50.00-520.00] MS
 Pbirulai

Pbirulai#3342-3350 RT: 8.36-8.38 AV: 3

F: FTMS + p ESI d Full ms2 491.34 ...
 m/z= 50.00000-1000.00000

| m/z | Intensity | Relative |
|-----------|-----------|----------|
| 58.06600 | 4772.1 | 1.64 |
| 70.06591 | 17329.6 | 5.97 |
| 72.08165 | 2555.5 | 0.88 |
| 84.08147 | 11850.0 | 4.08 |
| 85.66933 | 1599.5 | 0.55 |
| 98.09688 | 108251.8 | 37.30 |
| 109.12404 | 1555.7 | 0.54 |
| 112.11255 | 3902.9 | 1.34 |
| 113.10803 | 1911.5 | 0.66 |
| 114.09161 | 4320.2 | 1.49 |
| 114.12810 | 290212.7 | 100.00 |
| 126.12794 | 165127.2 | 56.90 |
| 131.11801 | 8333.8 | 2.87 |
| 131.86877 | 1608.3 | 0.55 |
| 143.15487 | 2046.7 | 0.71 |
| 146.06013 | 30049.1 | 10.35 |
| 147.61206 | 1501.9 | 0.52 |
| 157.16976 | 4397.5 | 1.52 |
| 171.18571 | 12272.5 | 4.23 |
| 174.05565 | 1856.6 | 0.64 |
| 175.08598 | 1692.0 | 0.58 |
| 183.18598 | 20730.0 | 7.14 |
| 196.92279 | 1913.0 | 0.66 |
| 199.90404 | 1516.9 | 0.52 |
| 211.20432 | 1572.3 | 0.54 |
| 228.24365 | 11097.5 | 3.82 |
| 231.11293 | 129171.4 | 44.51 |
| 231.13486 | 1769.1 | 0.61 |
| 234.85812 | 1637.8 | 0.56 |
| 273.26407 | 2432.4 | 0.84 |
| 278.80969 | 1627.5 | 0.56 |
| 286.15689 | 2555.5 | 0.88 |
| 304.16593 | 9221.4 | 3.18 |
| 318.32282 | 14327.3 | 4.94 |
| 321.19351 | 1908.5 | 0.66 |
| 361.22294 | 35534.4 | 12.24 |
| 405.53234 | 1662.7 | 0.57 |
| 413.94452 | 1674.9 | 0.58 |
| 425.78438 | 1710.9 | 0.59 |
| 446.31229 | 33258.3 | 11.46 |
| 461.08541 | 1725.7 | 0.59 |
| 466.28590 | 1767.0 | 0.61 |
| 474.70040 | 1604.6 | 0.55 |
| 491.37038 | 165186.7 | 56.92 |



NL: 7.80E7
 Pbirulai#3403 RT: 8.51
 AV: 1 T: FTMS + p ESI
 Full ms [100.00-1500.00]

NL: 2.89E5
 Pbirulai#3340-3355 RT:
 8.36-8.38 AV: 3 F: FTMS
 + p ESI d Full ms2
 491.34@hcd35.00
 [50.00-520.00]