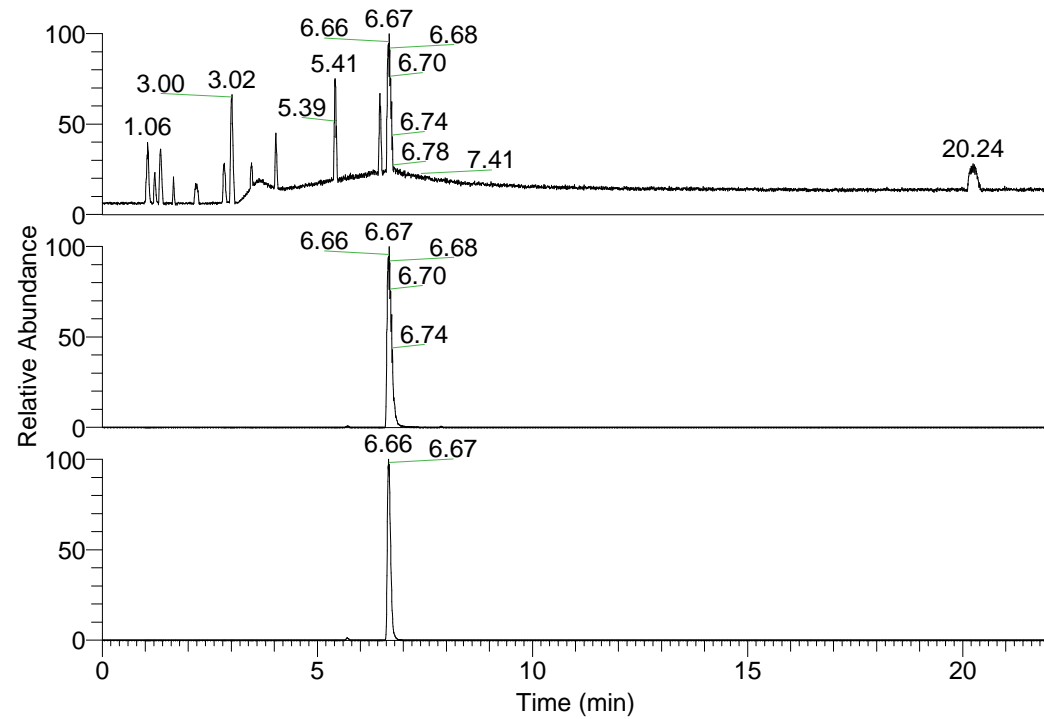


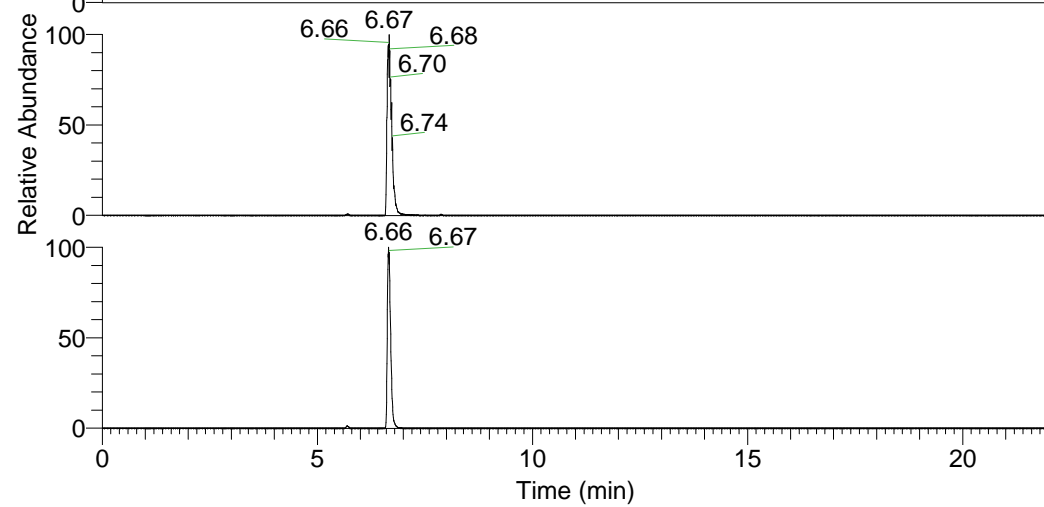
RT: 0.00 - 22.01



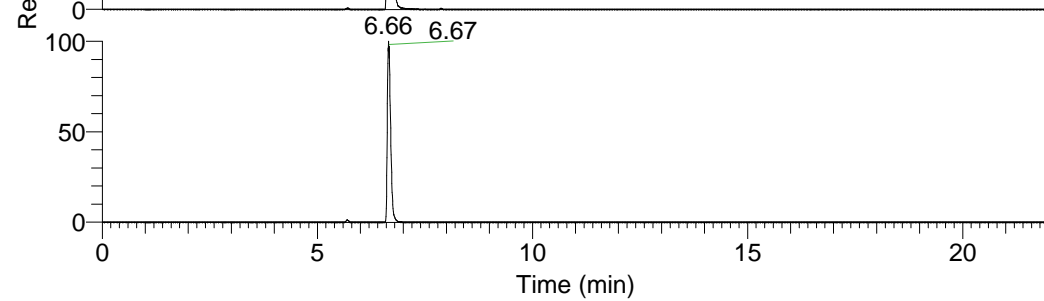
NL: 1.25E8
 Base Peak m/z=
 100.00000-1500.00000 F:
 FTMS + p ESI Full ms
 [100.00-1500.00] MS
 Pluctuosa_HDX

Pluctuosa_HDX#1068 RT: 6.67
 T: FTMS + p ESI Full ms [100.00-1500.00]
 m/z = 502.00000-503.00000

m/z	Intensity	Relative	Delta (ppm)	Composition
502.41455	125206960.0	100.00	0.48	C ₂₄ H ₃₂ ² H ₁₁ O ₃ N ₈
			-2.60	C ₂₄ H ₃₄ ² H ₁₀ O ₃ N ₈
			3.57	C ₂₄ H ₃₀ ² H ₁₂ O ₃ N ₈

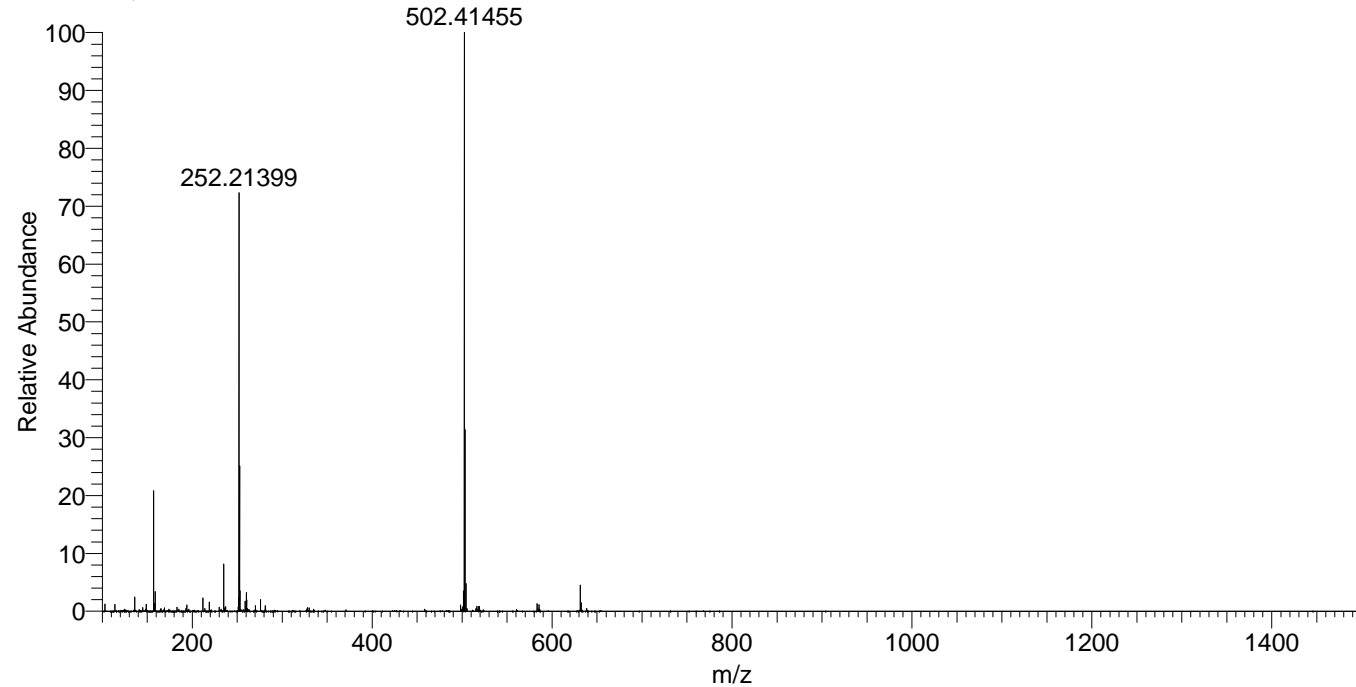


NL: 1.25E8
 Base Peak m/z=
 502.41235-502.41737 F:
 FTMS + p ESI Full ms
 [100.00-1500.00] MS
 Pluctuosa_HDX



NL: 9.39E7
 Base Peak m/z=
 252.21322-252.21574 F:
 FTMS + p ESI Full ms
 [100.00-1500.00] MS
 Pluctuosa_HDX

Pluctuosa_HDX #1068 RT: 6.67 AV: 1 NL: 1.23E8
 T: FTMS + p ESI Full ms [100.00-1500.00]



Pluctuosa_HDX #1068 RT: 6.67 AV: 1 NL: 1.23E8
 T: FTMS + p ESI Full ms [100.00-1500.00]

