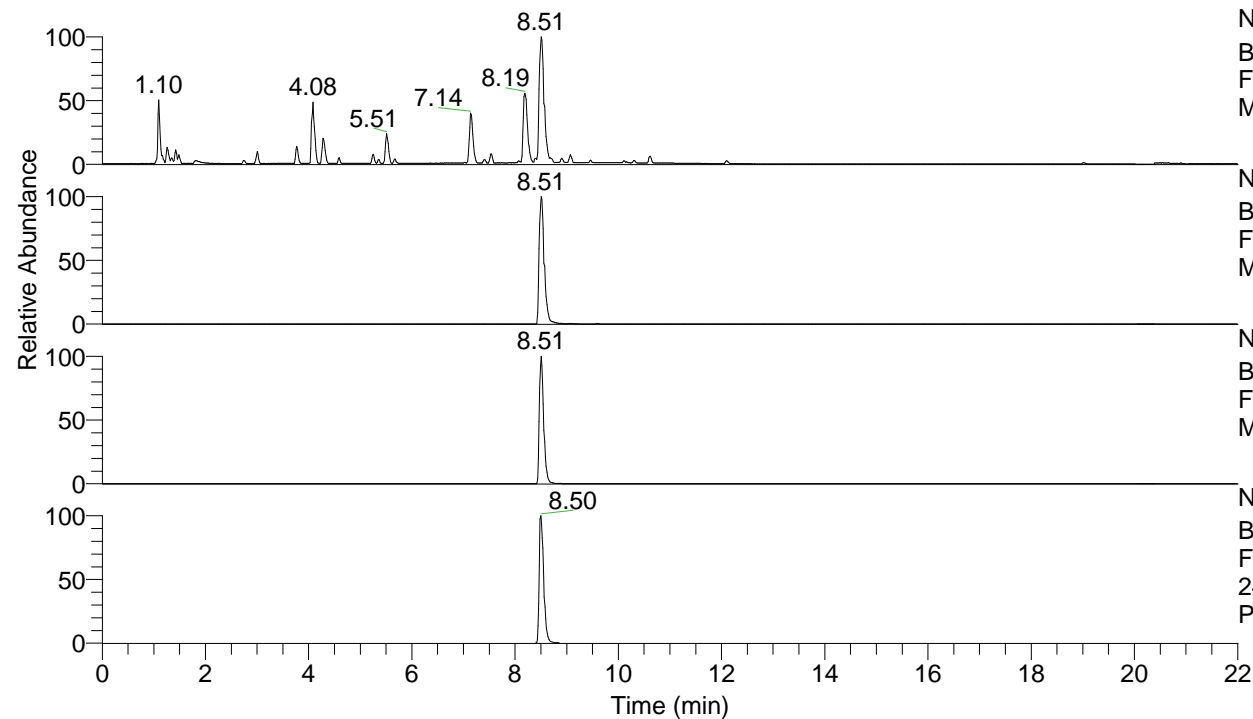


RT: 0.00 - 22.01



NL: 7.88E7
 Base Peak m/z= 100.00000-1500.00000 F:
 FTMS + p ESI Full ms [100.00-1500.00]
 MS Pbirulai

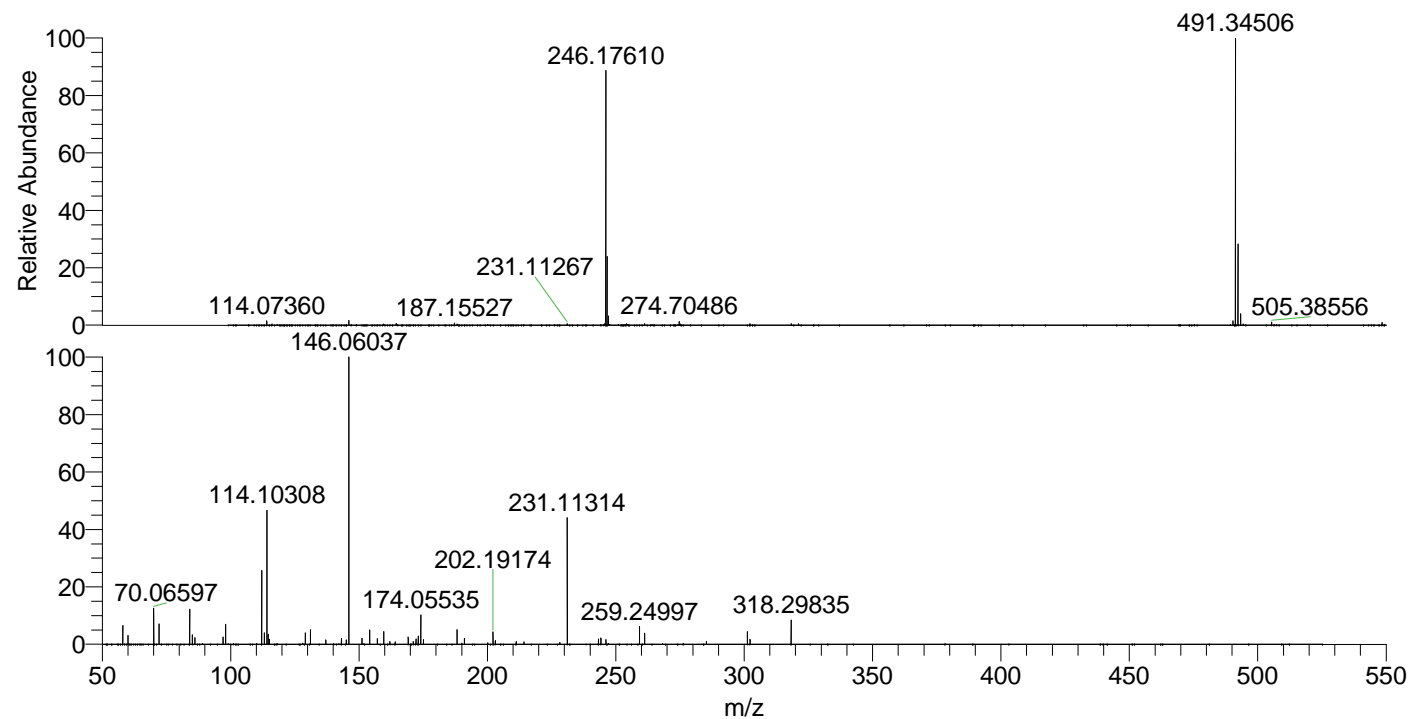
NL: 7.88E7
 Base Peak m/z= 491.34335-491.34827 F:
 FTMS + p ESI Full ms [100.00-1500.00]
 MS Pbirulai

NL: 7.02E7
 Base Peak m/z= 246.17559-246.17805 F:
 FTMS + p ESI Full ms [100.00-1500.00]
 MS Pbirulai

NL: 1.28E7
 Base Peak m/z= 50.00000-1500.00000 F:
 FTMS + p ESI d Full ms2
 246.18@hcd35.00 [50.00-520.00] MS
 Pbirulai

Pbirulai#3381-3435 RT: 8.46-8.58 AV: 10
 F: FTMS + p ESI d Full ms2 246.18@h ...
 m/z= 50.00000-1000.00000

m/z	Intensity	Relative
58.06607	514616.9	6.39
60.05659	241772.6	3.00
70.06596	992014.3	12.31
72.08163	566651.3	7.03
84.08152	998608.3	12.40
85.07674	265741.6	3.30
86.06077	190472.1	2.36
97.07666	199193.5	2.47
98.09712	569333.0	7.07
112.08750	535848.6	6.65
112.11264	2080311.6	25.83
113.10789	313247.4	3.89
114.09197	335708.7	4.17
114.10313	3834005.0	47.60
114.61327	277347.5	3.44
115.12349	140513.3	1.74
129.13901	320958.2	3.98
131.11830	413645.1	5.14
131.12934	181572.7	2.25
137.12381	112678.3	1.40
143.12943	154511.2	1.92
145.05261	120727.6	1.50
146.06035	8055362.5	100.00
151.13944	173032.2	2.15
154.13430	408190.9	5.07
157.14511	154568.6	1.92
159.65270	354626.9	4.40
162.05522	73714.0	0.92
164.07094	71482.6	0.89
169.17044	208739.3	2.59
171.16083	80029.7	0.99
172.18100	152444.3	1.89
173.04744	231785.8	2.88
174.05547	842661.1	10.46
175.08695	133180.3	1.65
188.18841	382543.3	4.75
191.05836	173851.0	2.16
191.08225	58920.6	0.73
202.19191	366963.4	4.56
203.08188	109496.5	1.36
211.19199	80556.8	1.00
214.20294	66404.2	0.82
228.21906	52668.1	0.65
231.11336	3643710.3	45.23
243.25499	153893.2	1.91
244.21350	172984.0	2.15
246.17684	137235.2	1.70
259.24978	503887.6	6.26
261.24016	320256.9	3.98
285.27693	78288.6	0.97
301.27165	364752.4	4.53
302.30282	143993.5	1.79
318.29826	709409.8	8.81



NL: 7.80E7
 Pbirulai#3403 RT: 8.51
 AV: 1 T: FTMS + p ESI
 Full ms [100.00-1500.00]

NL: 8.43E6
 Pbirulai#3378-3433 RT:
 8.46-8.57 AV: 9 F: FTMS
 + p ESI d Full ms2
 246.18@hcd35.00
 [50.00-520.00]