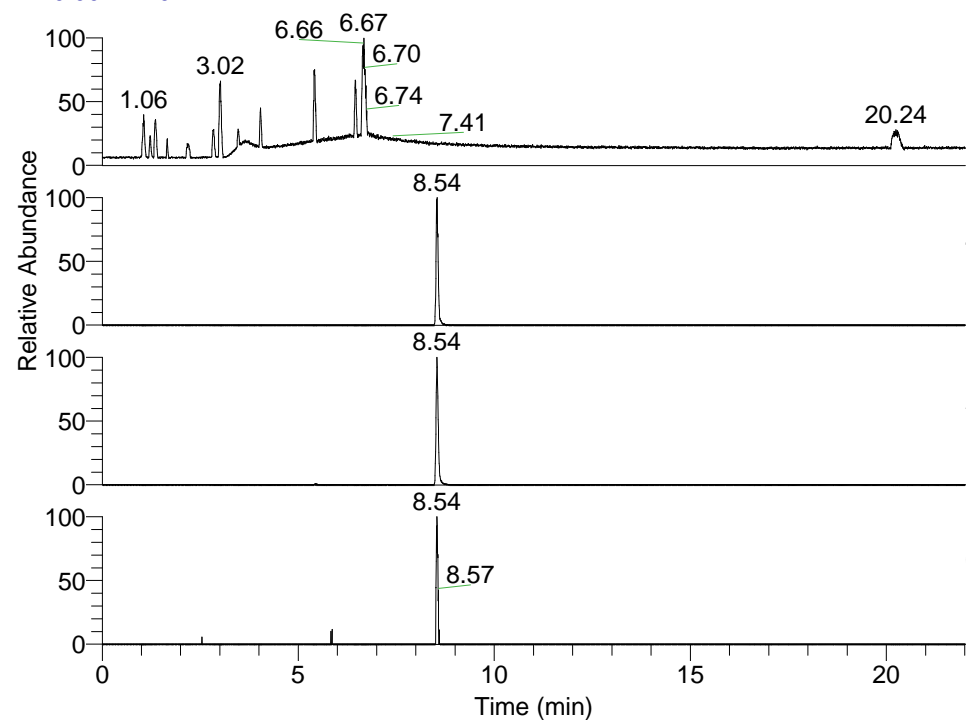


RT: 0.00 - 22.01



NL: 1.25E8
 Base Peak m/z=
 100.00000-1500.00000 F: FTMS + p
 ESI Full ms [100.00-1500.00] MS
 Pluctuosa_HDX

NL: 1.35E6
 Base Peak m/z=
 494.42061-494.42555 F: FTMS + p
 ESI Full ms [100.00-1500.00] MS
 Pluctuosa_HDX

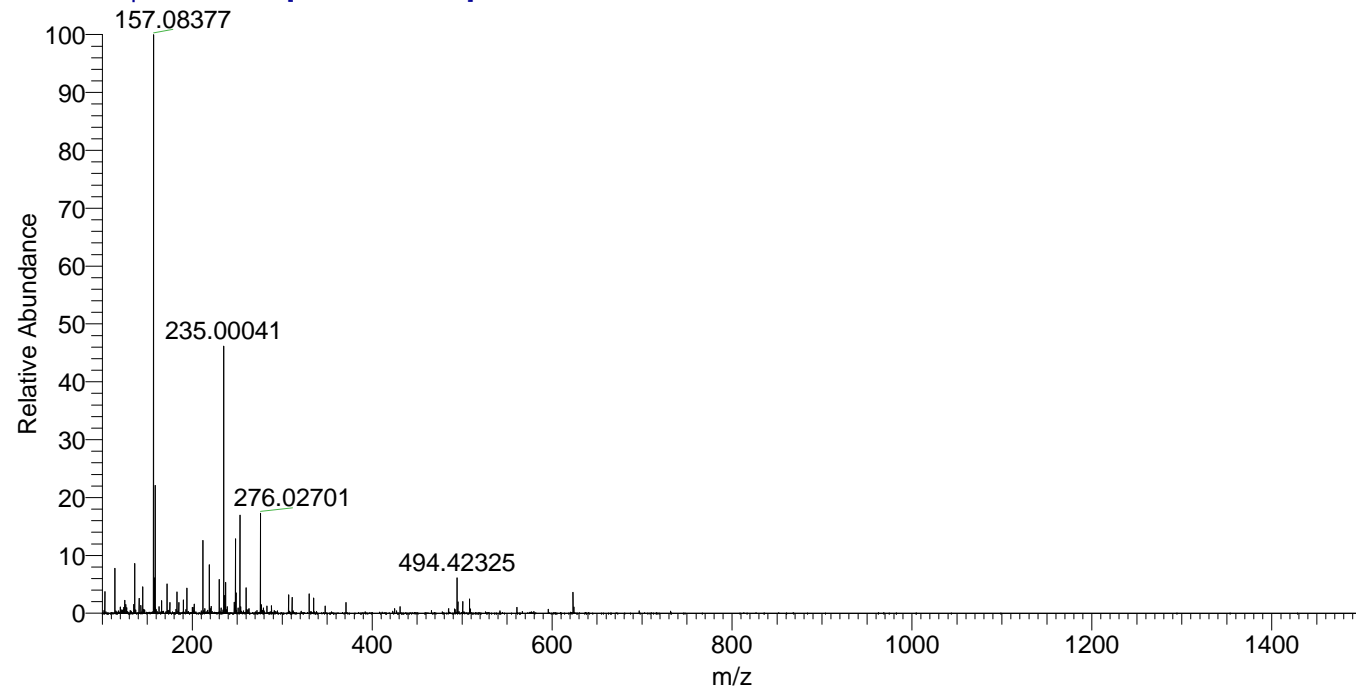
NL: 2.86E6
 Base Peak m/z=
 248.21735-248.21983 F: FTMS + p
 ESI Full ms [100.00-1500.00] MS
 Pluctuosa_HDX

NL: 3.50E4
 Base Peak m/z=
 609.41917-609.42527 F: FTMS + p
 ESI Full ms [100.00-1500.00] MS
 Pluctuosa_HDX

Pluctuosa_HDX#1377 RT: 8.54
 T: FTMS + p ESI Full ms [100.00-1500.00]
 m/z= 494.00000-495.00000

m/z	Intensity	Relative	Delta (ppm)	Composition
494.42325	1336142.8	100.00	1.44	C ₂₇ H ₄₄ ² H ₅ O ₂ N ₆
			-1.69	C ₂₇ H ₄₆ ² H ₄ O ₂ N ₆
			4.57	C ₂₇ H ₄₂ ² H ₆ O ₂ N ₆
			-4.82	C ₂₇ H ₄₈ ² H ₃ O ₂ N ₆

Pluctuosa_HDX #1377 RT: 8.54 AV: 1 NL: 2.19E7
 T: FTMS + p ESI Full ms [100.00-1500.00]



Pluctuosa_HDX #1377 RT: 8.54 AV: 1 NL: 1.33E6
 T: FTMS + p ESI Full ms [100.00-1500.00]

