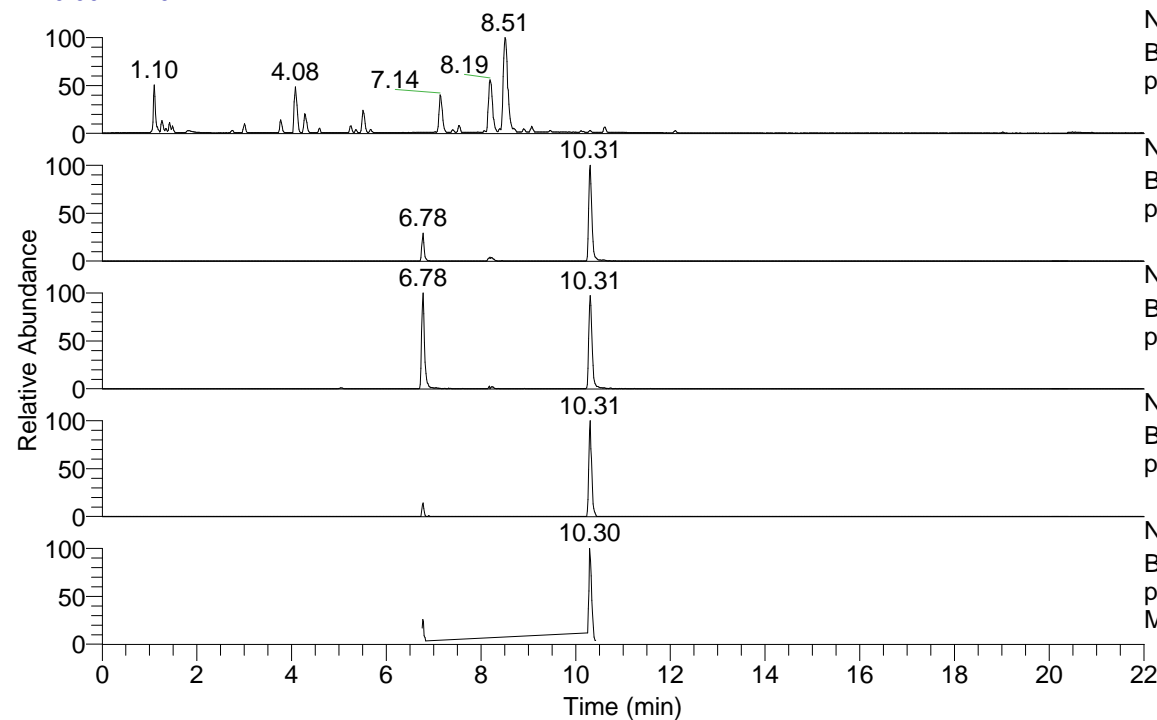


RT: 0.00 - 22.01



NL: 7.88E7  
 Base Peak m/z= 100.00000-1500.00000 F: FTMS +  
 p ESI Full ms [100.00-1500.00] MS Pbirulai

NL: 2.46E6  
 Base Peak m/z= 489.38925-489.39415 F: FTMS +  
 p ESI Full ms [100.00-1500.00] MS Pbirulai

NL: 8.48E5  
 Base Peak m/z= 245.19853-245.20099 F: FTMS +  
 p ESI Full ms [100.00-1500.00] MS Pbirulai

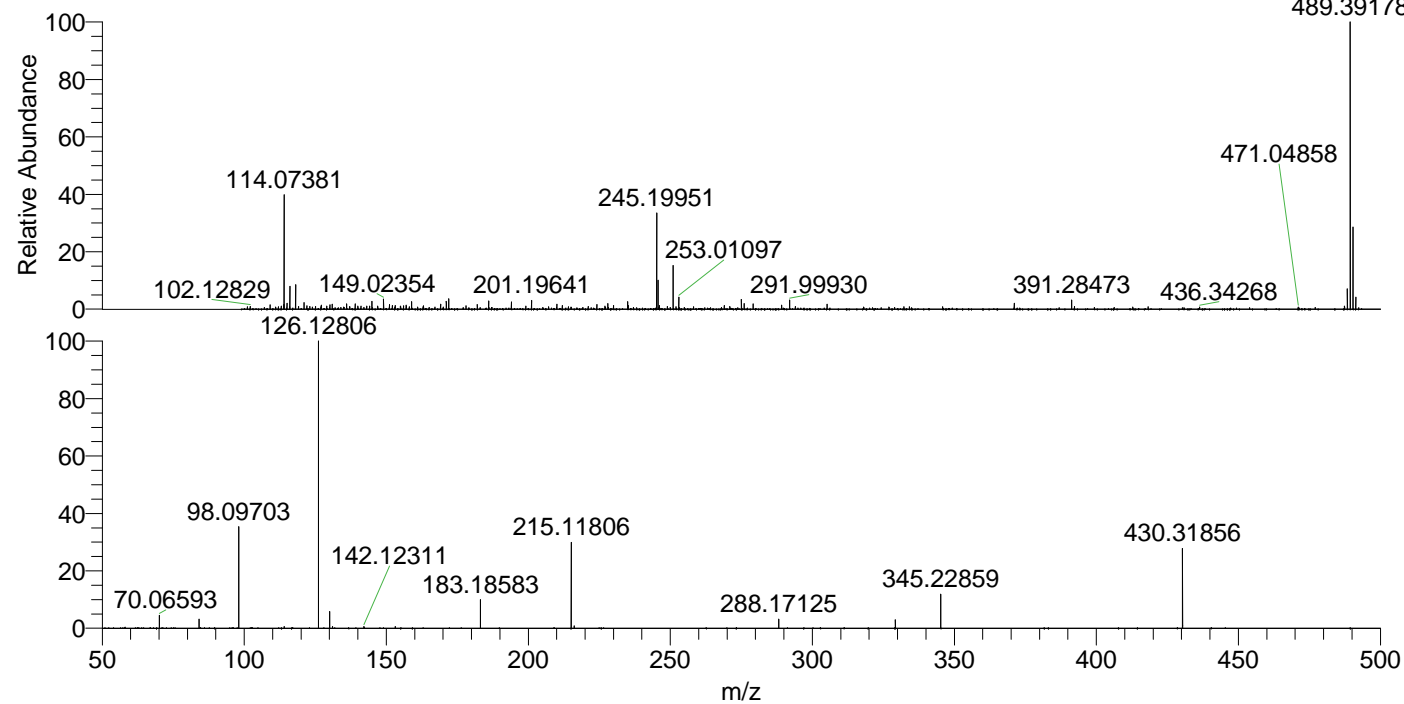
NL: 8.85E4  
 Base Peak m/z= 603.38154-603.38758 F: FTMS +  
 p ESI Full ms [100.00-1500.00] MS Pbirulai

NL: 6.12E5  
 Base Peak m/z= 50.00000-1500.00000 F: FTMS +  
 p ESI d Full ms2 489.39@hcd35.00 [50.00-515.00]  
 MS Pbirulai

Pbirulai#4108-4142 RT: 10.27-10.36

F: FTMS + p ESI d Full ms2 489.39 ...  
 m/z= 50.00000-1000.00000

m/z	Intensity	Relative
70.06593	15816.0	4.56
84.08166	10899.0	3.14
98.09703	118993.0	34.29
114.09198	2001.0	0.58
126.12806	347032.5	100.00
130.06548	19797.8	5.70
131.11839	2145.0	0.62
142.12311	2206.0	0.64
153.13840	2027.7	0.58
183.18583	33799.4	9.74
215.11806	100391.7	28.93
216.20728	2923.5	0.84
288.17125	10557.7	3.04
329.23472	9921.5	2.86
345.22859	40089.4	11.55
430.31856	93933.1	27.07



NL: 2.43E6  
 Pbirulai#4123 RT: 10.31  
 AV: 1 T: FTMS + p ESI  
 Full lock ms  
 [100.00-1500.00]

NL: 3.35E5  
 Pbirulai#4104-4148 RT:  
 10.27-10.36 AV: 7 F:  
 FTMS + p ESI d Full ms2  
 489.39@hcd35.00  
 [50.00-515.00]