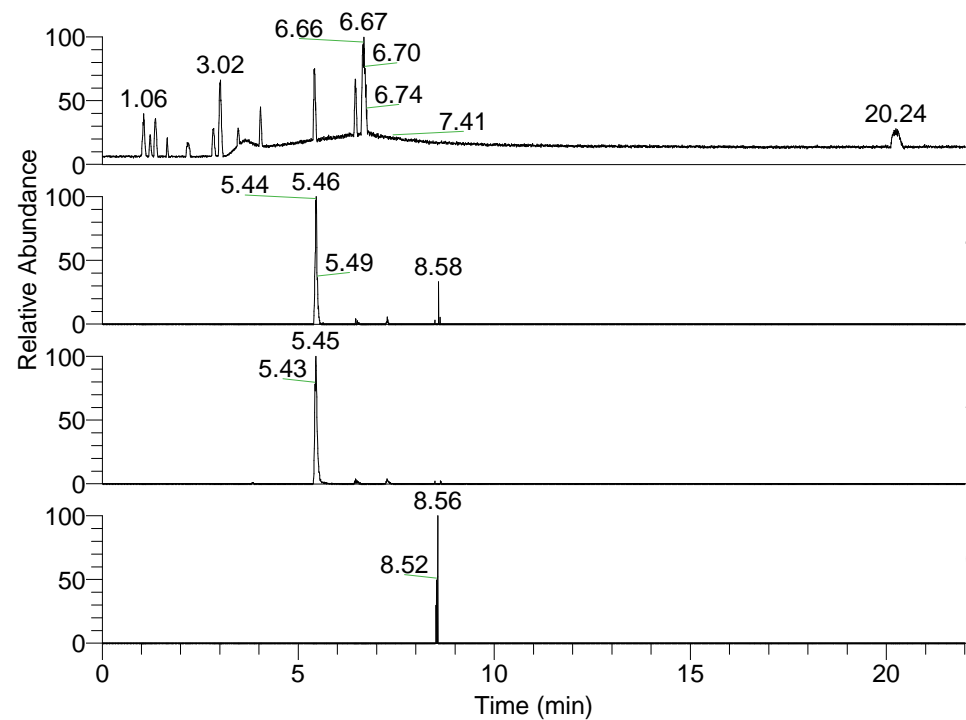


RT: 0.00 - 22.01



NL: 1.25E8
 Base Peak m/z=
 100.00000-1500.00000 F: FTMS + p
 ESI Full ms [100.00-1500.00] MS
 Pluctuosa_HDX

NL: 3.79E5
 Base Peak m/z=
 495.42688-495.43184 F: FTMS + p
 ESI Full ms [100.00-1500.00] MS
 Pluctuosa_HDX

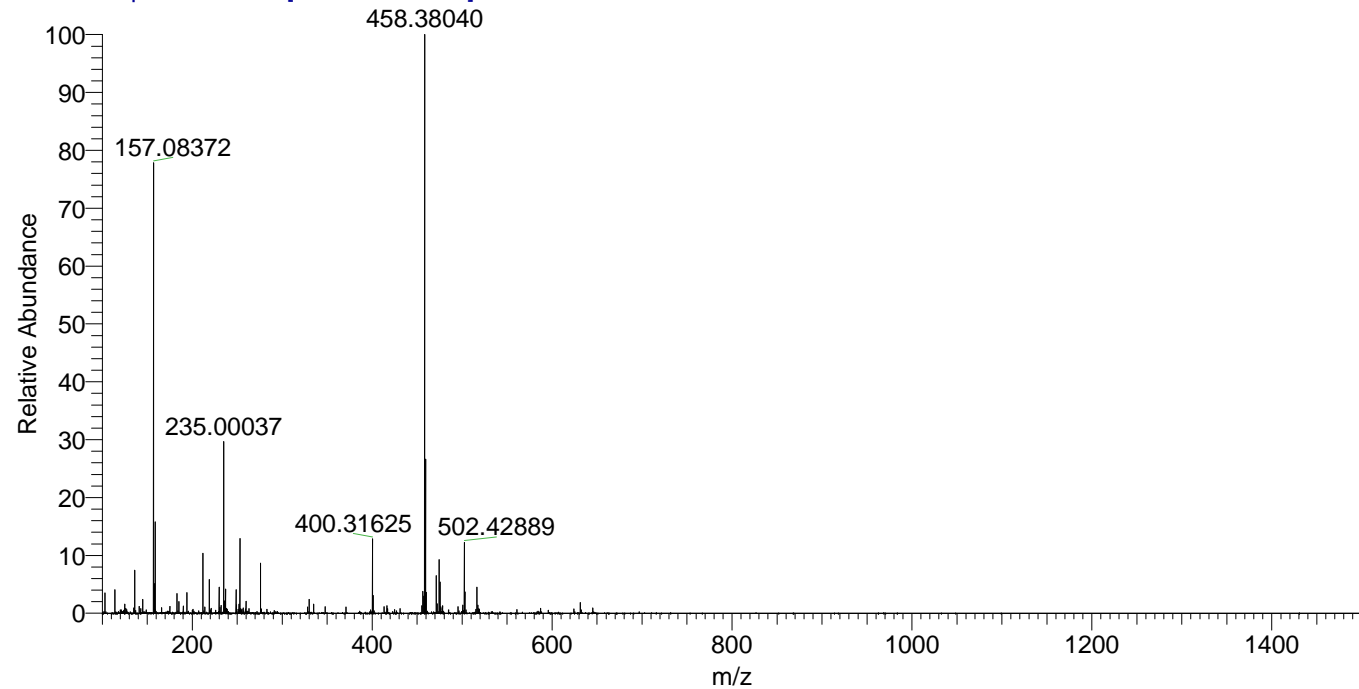
NL: 1.56E6
 Base Peak m/z=
 248.72049-248.72297 F: FTMS + p
 ESI Full ms [100.00-1500.00] MS
 Pluctuosa_HDX

NL: 1.32E4
 Base Peak m/z=
 610.42545-610.43155 F: FTMS + p
 ESI Full ms [100.00-1500.00] MS
 Pluctuosa_HDX

Pluctuosa_HDX#864 RT: 5.46
 T: FTMS + p ESI Full ms [100.00-1500.00]
 m/z= 495.00000-496.00000

m/z	Intensity	Relative	Delta (ppm)	Composition
495.42917	378794.3	100.00	0.72	C ₂₇ H ₄₃ ² H ₆ O ₂ N ₆
			-2.40	C ₂₇ H ₄₅ ² H ₅ O ₂ N ₆
			3.85	C ₂₇ H ₄₁ ² H ₇ O ₂ N ₆

Pluctuosa_HDX #864 RT: 5.46 AV: 1 NL: 3.31E7
 T: FTMS + p ESI Full ms [100.00-1500.00]



Pluctuosa_HDX #864 RT: 5.46 AV: 1 NL: 4.06E6
 T: FTMS + p ESI Full ms [100.00-1500.00]

