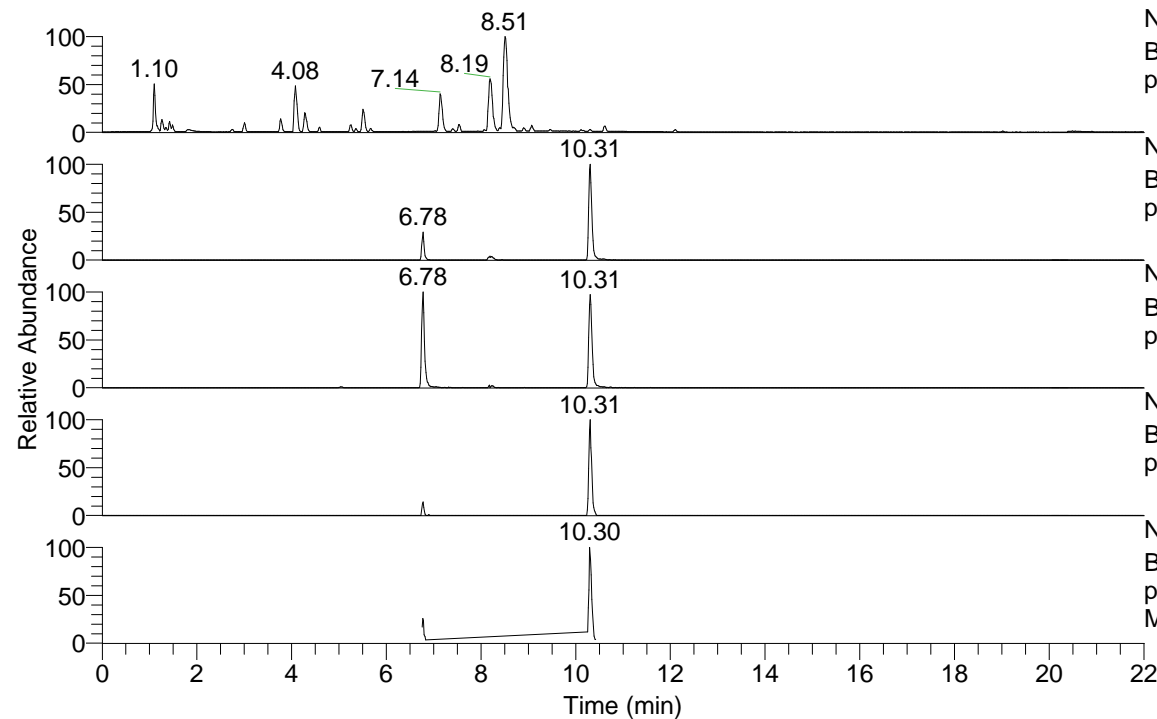


RT: 0.00 - 22.01



NL: 7.88E7
 Base Peak m/z= 100.00000-1500.00000 F: FTMS +
 p ESI Full ms [100.00-1500.00] MS Pbirulai

NL: 2.46E6
 Base Peak m/z= 489.38925-489.39415 F: FTMS +
 p ESI Full ms [100.00-1500.00] MS Pbirulai

NL: 8.48E5
 Base Peak m/z= 245.19853-245.20099 F: FTMS +
 p ESI Full ms [100.00-1500.00] MS Pbirulai

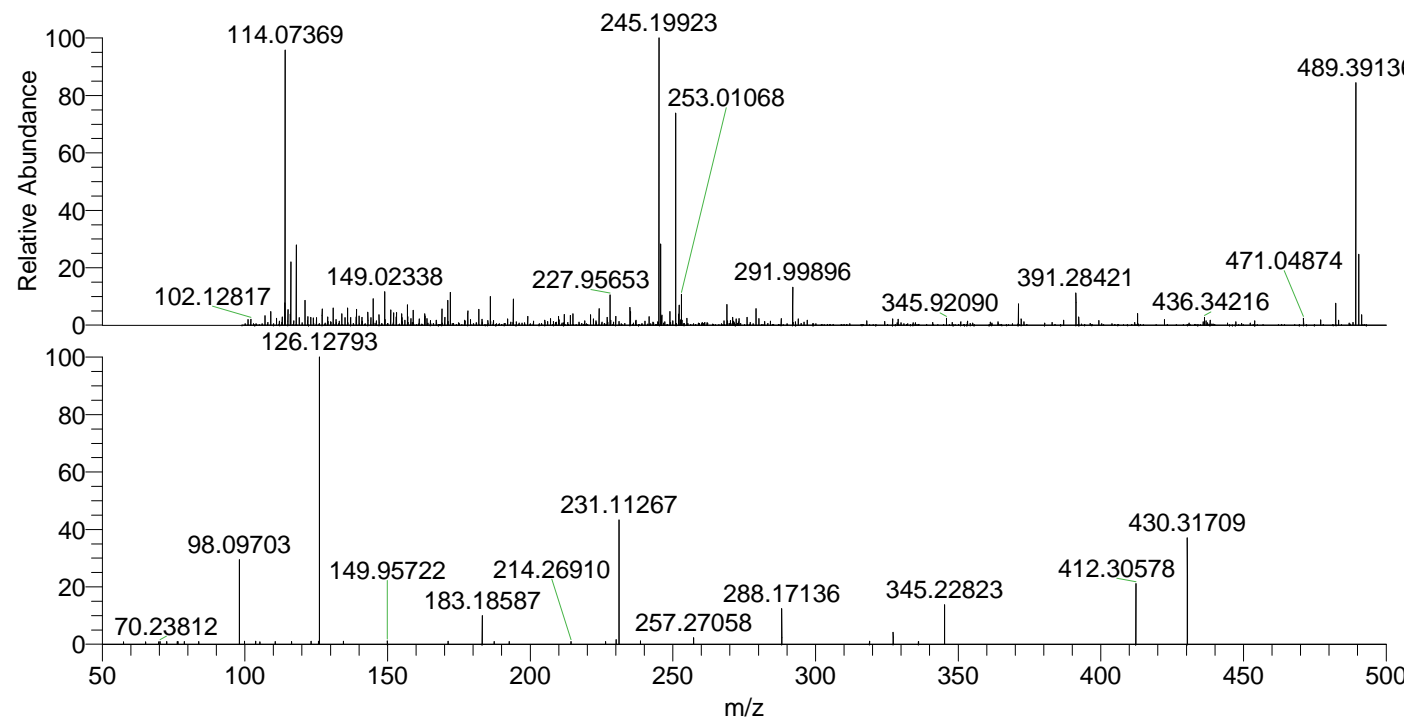
NL: 8.85E4
 Base Peak m/z= 603.38154-603.38758 F: FTMS +
 p ESI Full ms [100.00-1500.00] MS Pbirulai

NL: 6.12E5
 Base Peak m/z= 50.00000-1500.00000 F: FTMS +
 p ESI Full ms2 489.39@hcd35.00 [50.00-515.00]
 MS Pbirulai

Pbirulai#2699-2717 RT: 6.76-6.80 AV: 4

F: FTMS + p ESI d Full ms2 489.39 ...
 m/z= 50.00000-1000.00000

m/z	Intensity	Relative
57.49825	896.3	0.84
65.15064	931.2	0.87
69.83415	894.5	0.84
70.23812	1048.4	0.99
72.61173	979.7	0.92
76.31264	946.2	0.89
76.54347	968.0	0.91
78.77780	949.7	0.89
83.78669	1046.8	0.98
98.09703	30596.8	28.75
99.85961	1146.5	1.08
103.74560	1086.2	1.02
105.26166	895.5	0.84
110.59829	1040.4	0.98
116.38969	1039.9	0.98
123.20710	1073.7	1.01
125.82652	1113.2	1.05
126.12793	106436.4	100.00
134.49941	1102.0	1.04
149.95722	1287.1	1.21
171.20308	1105.0	1.04
183.18587	10524.4	9.89
187.40630	1063.1	1.00
192.64403	1020.8	0.96
214.26910	1051.5	0.99
226.40774	1052.3	0.99
230.12887	1667.0	1.57
231.11267	44953.1	42.23
238.66797	1191.8	1.12
257.27058	2321.1	2.18
288.17136	12901.3	12.12
318.93377	1109.8	1.04
327.21840	4362.7	4.10
336.09434	1058.0	0.99
345.22823	14295.5	13.43
412.30578	22350.2	21.00
430.31709	39732.0	37.33



NL: 8.35E5
 Pbirulai#2707 RT: 6.78
 AV: 1 T: FTMS + p ESI
 Full lock ms
 [100.00-1500.00]

NL: 1.04E5
 Pbirulai#2697-2720 RT:
 6.76-6.80 AV: 4 F: FTMS
 + p ESI d Full ms2
 489.39@hcd35.00
 [50.00-515.00]