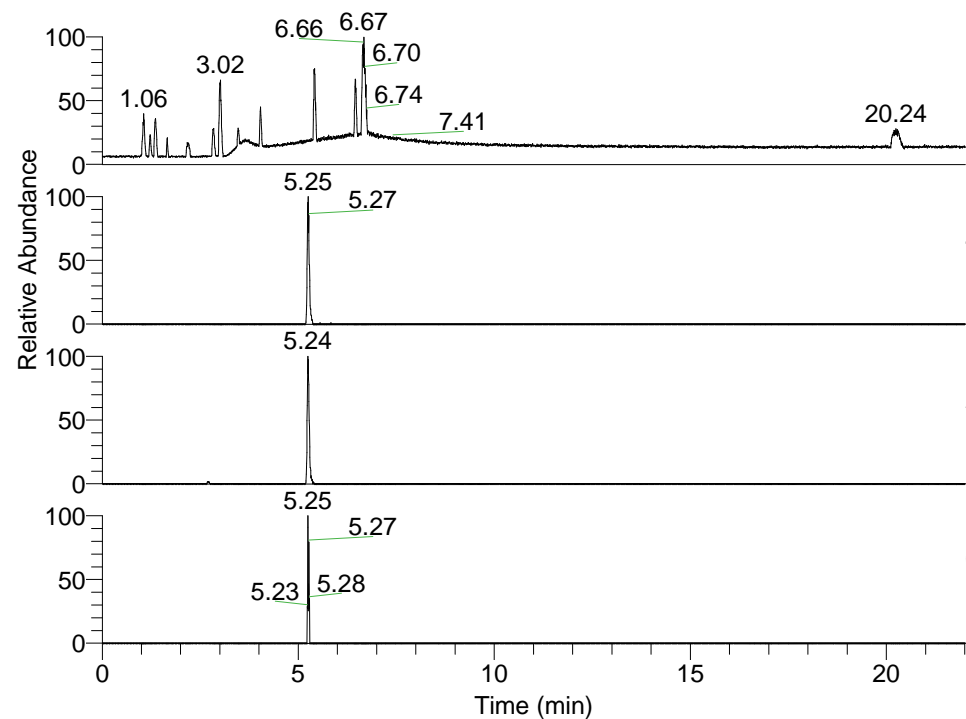


RT: 0.00 - 22.01



NL: 1.25E8  
 Base Peak m/z=  
 100.00000-1500.00000 F: FTMS + p  
 ESI Full ms [100.00-1500.00] MS  
 Pluctuosa\_HDX

NL: 4.02E5  
 Base Peak m/z=  
 487.39957-487.40445 F: FTMS + p  
 ESI Full ms [100.00-1500.00] MS  
 Pluctuosa\_HDX

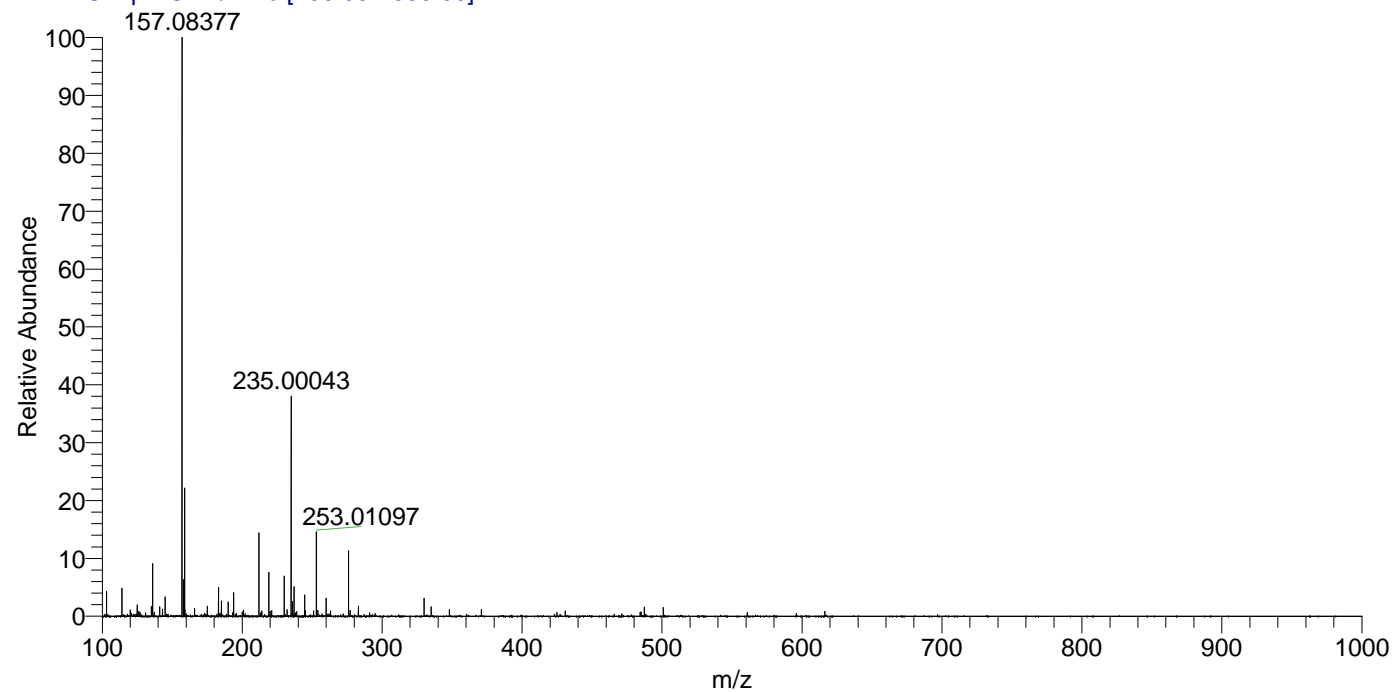
NL: 9.33E5  
 Base Peak m/z=  
 244.70684-244.70928 F: FTMS + p  
 ESI Full ms [100.00-1500.00] MS  
 Pluctuosa\_HDX

NL: 1.26E4  
 Base Peak m/z=  
 602.39815-602.40417 F: FTMS + p  
 ESI Full ms [100.00-1500.00] MS  
 Pluctuosa\_HDX

Pluctuosa\_HDX#828 RT: 5.25  
 T: FTMS + p ESI Full ms [100.00-1500.00]  
 m/z= 487.00000-488.00000

m/z	Intensity	Relative	Delta (ppm)	Composition
487.40210	344536.8	100.00	1.30	C <sub>25</sub> H <sub>43</sub> <sup>2</sup> H <sub>5</sub> O <sub>4</sub> N <sub>5</sub>
			-1.87	C <sub>25</sub> H <sub>45</sub> <sup>2</sup> H <sub>4</sub> O <sub>4</sub> N <sub>5</sub>
			4.48	C <sub>25</sub> H <sub>41</sub> <sup>2</sup> H <sub>6</sub> O <sub>4</sub> N <sub>5</sub>

Pluctuosa\_HDX #828 RT: 5.25 AV: 1 NL: 2.20E7  
 T: FTMS + p ESI Full ms [100.00-1500.00]



Pluctuosa\_HDX #828 RT: 5.25 AV: 1 NL: 3.42E5  
 T: FTMS + p ESI Full ms [100.00-1500.00]

