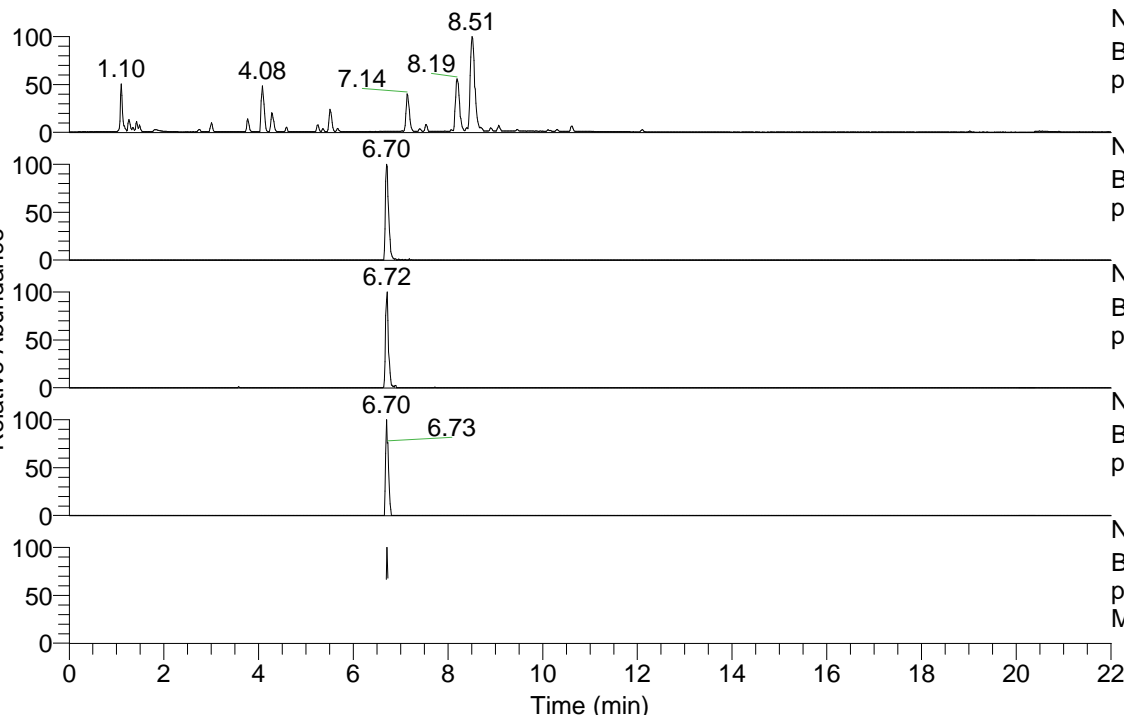


RT: 0.00 - 22.01



NL: 7.88E7
 Base Peak m/z= 100.00000-1500.00000 F: FTMS + p ESI Full ms [100.00-1500.00] MS Pbirulai

NL: 2.96E5
 Base Peak m/z= 482.36822-482.37304 F: FTMS + p ESI Full ms [100.00-1500.00] MS Pbirulai

NL: 1.64E5
 Base Peak m/z= 241.68802-241.69044 F: FTMS + p ESI Full ms [100.00-1500.00] MS Pbirulai

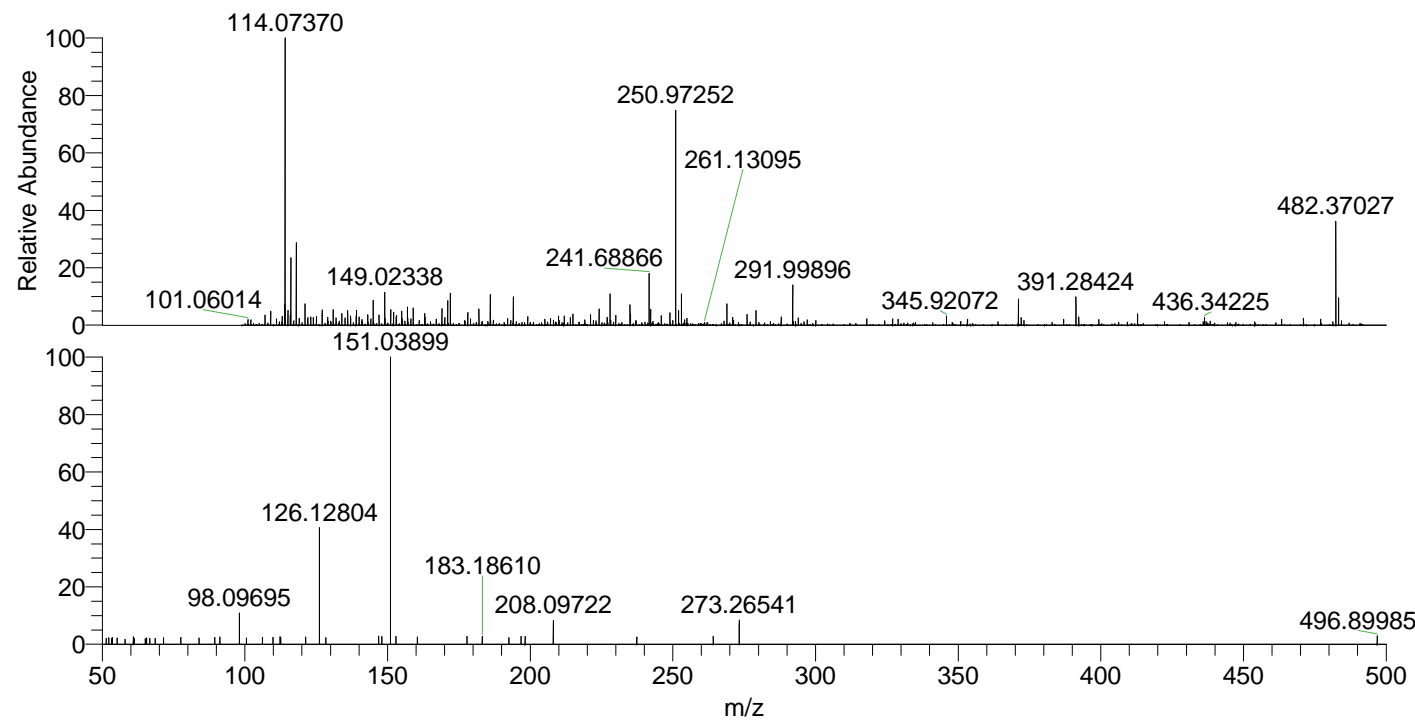
NL: 1.68E4
 Base Peak m/z= 596.36051-596.36647 F: FTMS + p ESI Full ms [100.00-1500.00] MS Pbirulai

NL: 4.85E4
 Base Peak m/z= 50.00000-1500.00000 F: FTMS + p ESI Full ms2 241.69@hcd35.00 [50.00-510.00] MS Pbirulai

Pbirulai#2676-2688 RT: 6.70-6.73 AV: 3

F: FTMS + p ESI d Full ms2 241.69 ...
 m/z= 50.00000-1000.00000

m/z	Intensity	Relative
51.36477	781.8	2.10
52.28115	851.8	2.29
53.27844	733.9	1.97
53.57180	895.9	2.41
55.17367	812.5	2.18
58.06584	661.5	1.78
60.88365	958.8	2.58
61.23617	772.5	2.08
65.05592	730.6	1.96
65.56824	790.2	2.12
66.69614	771.4	2.07
68.54091	781.2	2.10
71.53501	863.1	2.32
77.54817	890.6	2.39
83.89990	831.1	2.23
89.41302	914.7	2.46
91.22220	929.0	2.50
98.09695	4168.3	11.20
100.51015	801.0	2.15
106.12624	879.3	2.36
109.84121	917.3	2.46
112.27840	988.9	2.66
112.56852	886.7	2.38
121.28749	951.9	2.56
126.12804	15114.7	40.61
128.35553	864.9	2.32
146.87429	1044.1	2.81
147.97809	1038.4	2.79
151.03899	37219.5	100.00
152.92485	1009.7	2.71
160.42788	922.1	2.48
177.81693	1032.6	2.77
183.18610	1047.1	2.81
192.54248	862.4	2.32
196.82742	1028.9	2.76
198.21267	1024.7	2.75
208.09722	3088.3	8.30
237.36060	948.3	2.55
264.16939	1015.3	2.73
273.26541	3228.2	8.67
496.89985	1099.4	2.95



NL: 8.18E5
 Pbirulai#2677 RT: 6.70
 AV: 1 T: FTMS + p ESI
 Full lock ms
 [100.00-1500.00]

NL: 3.70E4
 Pbirulai#2583-2771 RT:
 6.70-6.73 AV: 3 F: FTMS
 + p ESI d Full ms2
 241.69@hcd35.00
 [50.00-510.00]