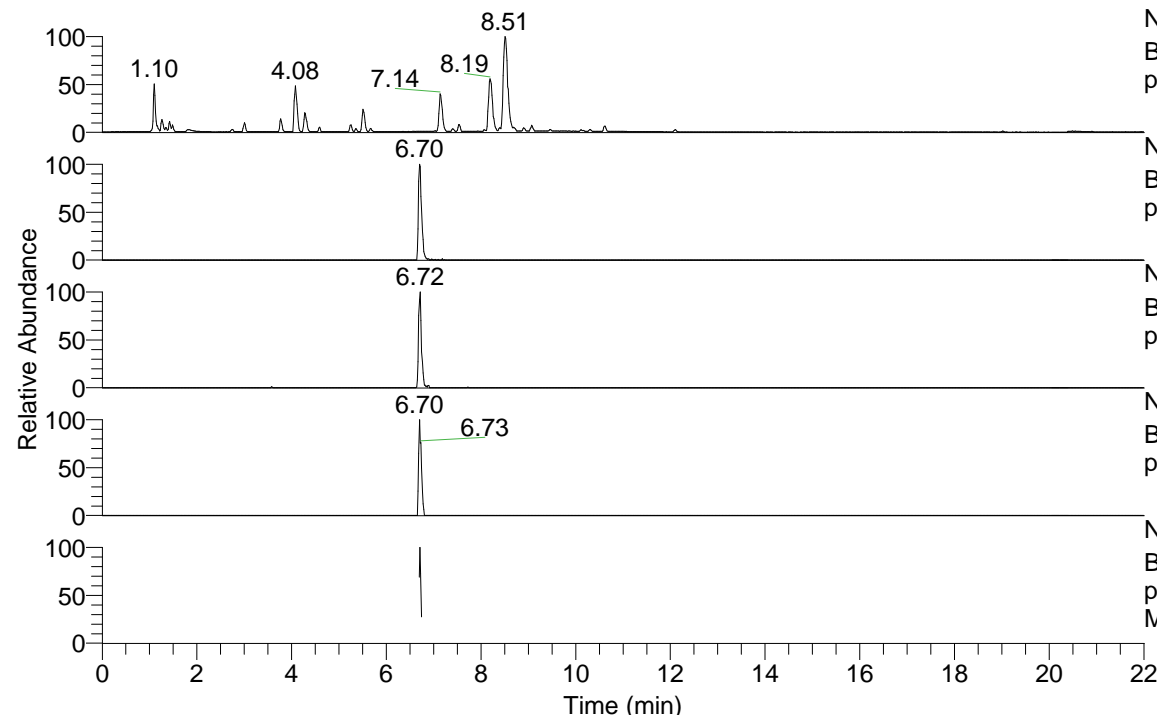


RT: 0.00 - 22.01



NL: 7.88E7  
 Base Peak m/z= 100.00000-1500.00000 F: FTMS + p ESI Full ms [100.00-1500.00] MS Pbirulai

NL: 2.96E5  
 Base Peak m/z= 482.36822-482.37304 F: FTMS + p ESI Full ms [100.00-1500.00] MS Pbirulai

NL: 1.64E5  
 Base Peak m/z= 241.68802-241.69044 F: FTMS + p ESI Full ms [100.00-1500.00] MS Pbirulai

NL: 1.68E4  
 Base Peak m/z= 596.36051-596.36647 F: FTMS + p ESI Full ms [100.00-1500.00] MS Pbirulai

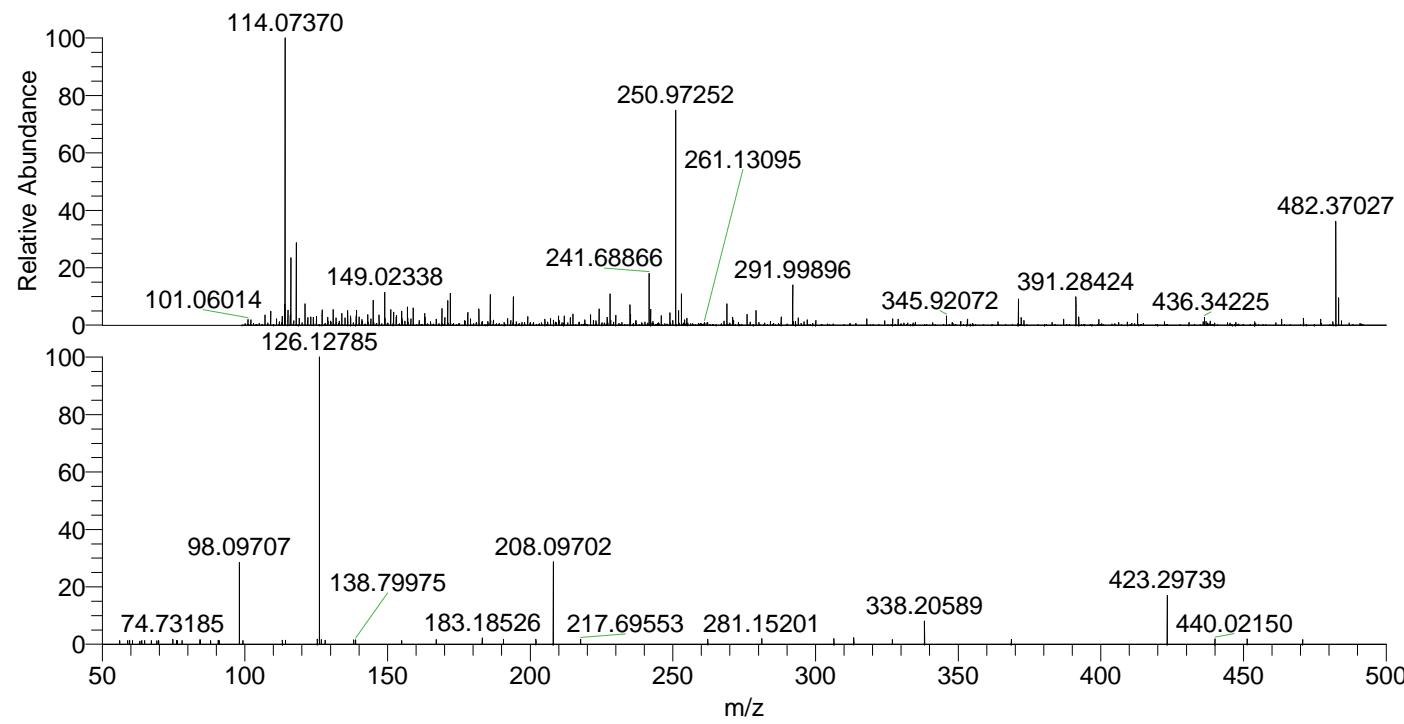
NL: 1.08E5  
 Base Peak m/z= 50.00000-1500.00000 F: FTMS + p ESI d Full ms2 482.37@hcd35.00 [50.00-510.00] MS Pbirulai

Pbirulai#2674-2693 RT: 6.69-6.74 AV: 4

F: FTMS + p ESI d Full ms2 482.37 ...

m/z= 50.00000-1000.00000

m/z	Intensity	Relative
56.14523	948.2	1.35
58.97247	870.7	1.24
59.55862	969.4	1.38
60.58237	866.7	1.24
63.14528	740.2	1.06
63.85668	868.1	1.24
64.90742	935.7	1.33
67.21105	904.0	1.29
69.17996	867.5	1.24
69.69162	918.5	1.31
69.82764	785.0	1.12
74.73185	1191.9	1.70
76.05168	906.7	1.29
76.29173	891.7	1.27
77.96469	922.1	1.31
84.25395	1112.3	1.59
84.39571	1013.4	1.44
87.95704	904.4	1.29
90.66680	1013.8	1.45
90.96012	884.5	1.26
98.09707	20218.4	28.82
99.28437	884.5	1.26
113.16090	951.0	1.36
114.23407	973.7	1.39
125.39242	1264.5	1.80
126.12785	70146.7	100.00
126.76662	1146.9	1.64
128.13919	992.6	1.42
138.13478	1068.3	1.52
138.79975	1072.4	1.53
154.92691	923.8	1.32
167.04203	1106.7	1.58
183.18526	1520.6	2.17
190.60943	1215.0	1.73
202.01465	1218.0	1.74
208.09702	20116.5	28.68
217.69553	1210.7	1.73
262.25504	1207.1	1.72
281.15201	1403.3	2.00
306.45422	1363.4	1.94
313.41607	1602.6	2.28
326.92608	1104.2	1.57
338.20589	5644.5	8.05
368.64761	1173.1	1.67
423.29739	11904.6	16.97
440.02150	1292.0	1.84
451.29833	1281.6	1.83
470.76217	1138.6	1.62



NL: 8.18E5  
 Pbirulai#2677 RT: 6.70  
 AV: 1 T: FTMS + p ESI  
 Full lock ms  
 [100.00-1500.00]

NL: 7.00E4  
 Pbirulai#2669-2700 RT:  
 6.69-6.74 AV: 4 F: FTMS  
 + p ESI d Full ms2  
 482.37@hcd35.00  
 [50.00-510.00]