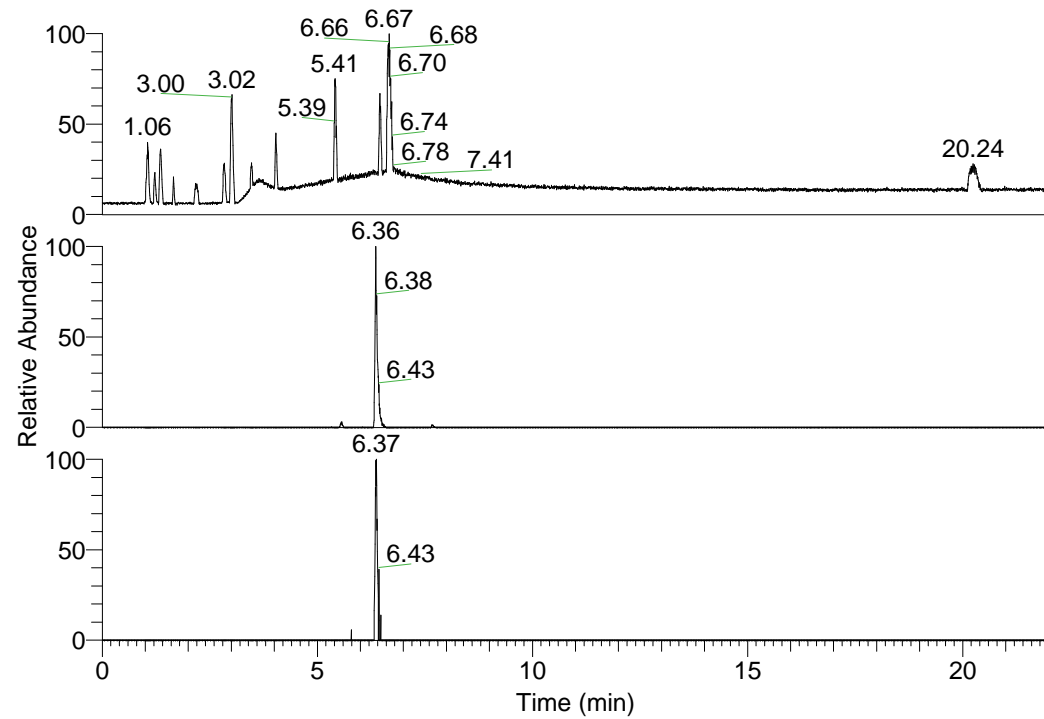


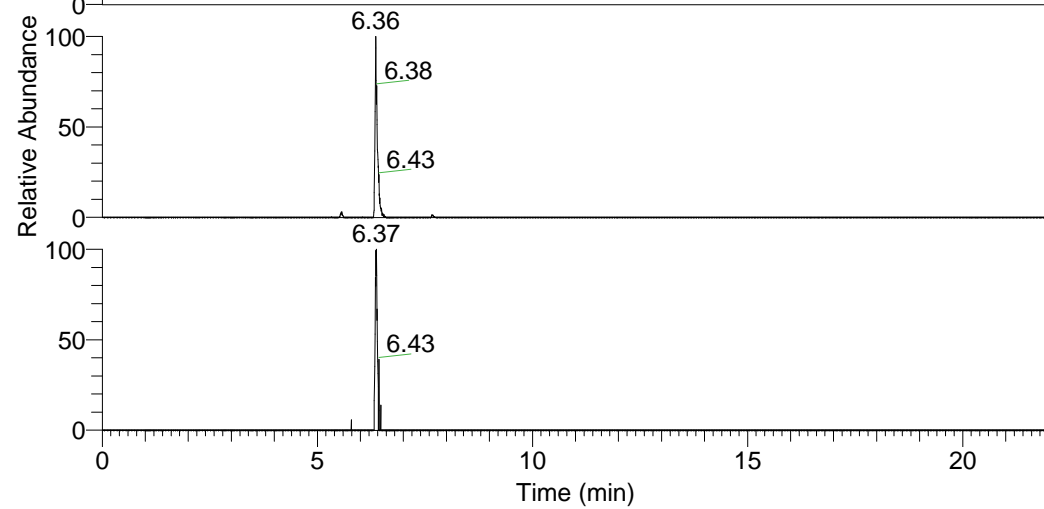
RT: 0.00 - 22.01



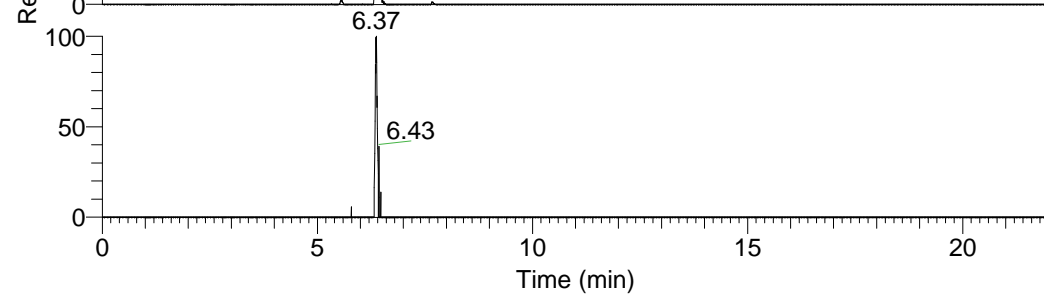
NL: 1.25E8
 Base Peak m/z=
 100.00000-1500.00000 F:
 FTMS + p ESI Full ms
 [100.00-1500.00] MS
 Pluctuosa_HDX

Pluctuosa_HDX#1013 RT: 6.36
 T: FTMS + p ESI Full ms [100.00-1500.00]
 m/z= 485.00000-486.00000

m/z	Intensity	Relative	Delta (ppm)	Composition
485.40558	1143211.6	100.00	1.23	C ₂₅ H ₃₇ ² H ₈ O ₃ N ₆
			-1.96	C ₂₅ H ₃₉ ² H ₇ O ₃ N ₆
			4.42	C ₂₅ H ₃₅ ² H ₉ O ₃ N ₆

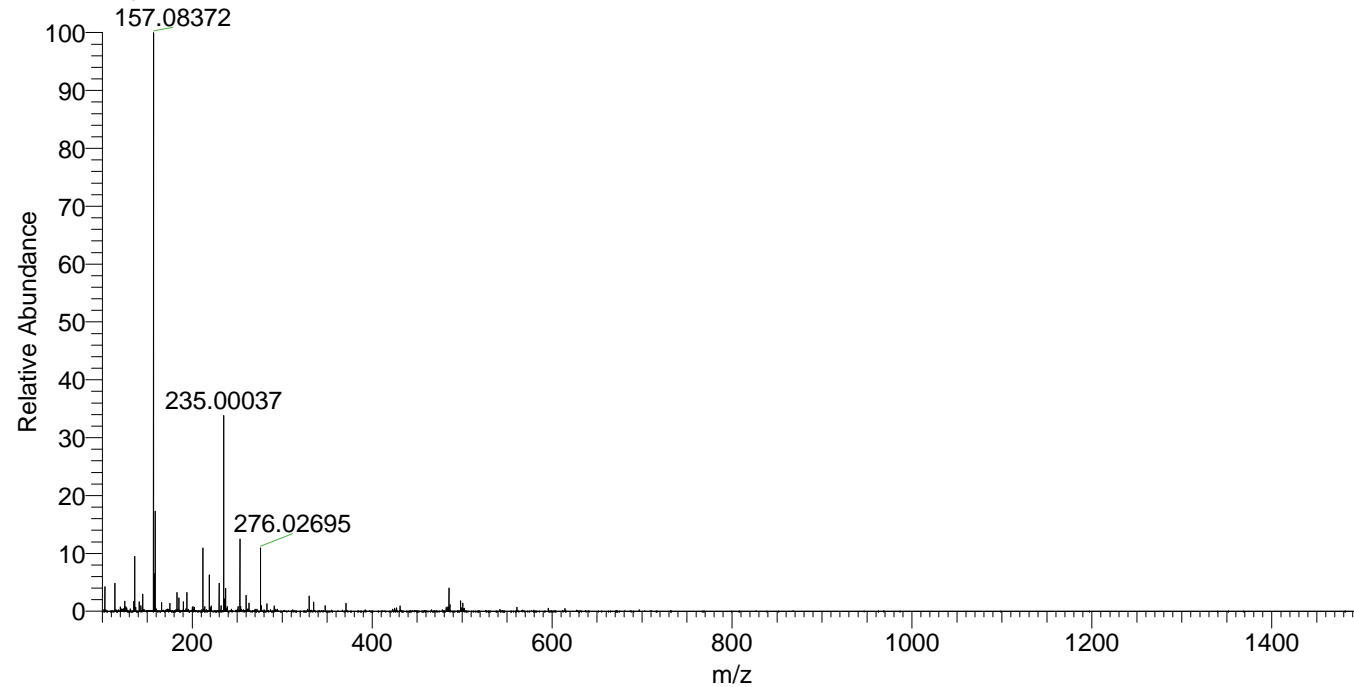


NL: 1.14E6
 Base Peak m/z=
 485.40310-485.40796 F:
 FTMS + p ESI Full ms
 [100.00-1500.00] MS
 Pluctuosa_HDX



NL: 9.76E4
 Base Peak m/z=
 243.70860-243.71104 F:
 FTMS + p ESI Full ms
 [100.00-1500.00] MS
 Pluctuosa_HDX

Pluctuosa_HDX #1013 RT: 6.36 AV: 1 NL: 2.84E7
 T: FTMS + p ESI Full ms [100.00-1500.00]



Pluctuosa_HDX #1013 RT: 6.36 AV: 1 NL: 1.13E6
 T: FTMS + p ESI Full ms [100.00-1500.00]

