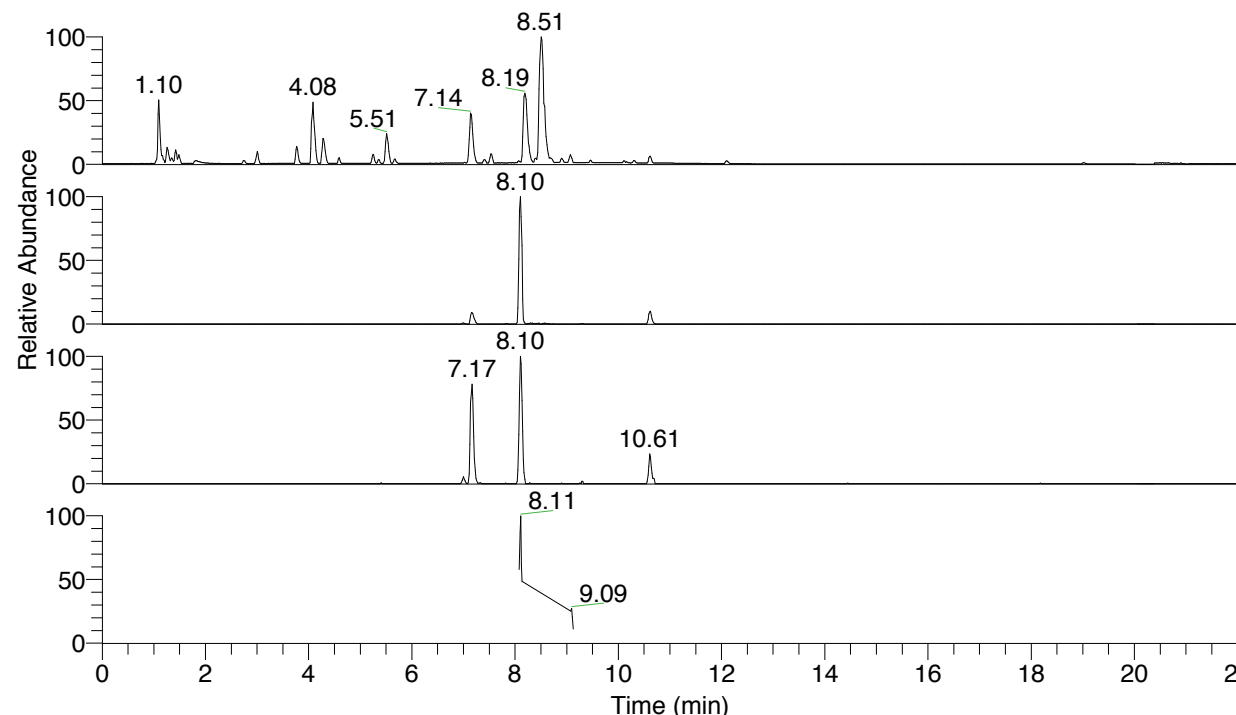


RT: 0.00 - 22.01



NL: 7.88E7
 Base Peak m/z= 100.00000-1500.00000 F:
 FTMS + p ESI Full ms [100.00-1500.00]
 MS Pbirulai

NL: 1.78E6
 Base Peak m/z= 477.35292-477.35770 F:
 FTMS + p ESI Full ms [100.00-1500.00]
 MS Pbirulai

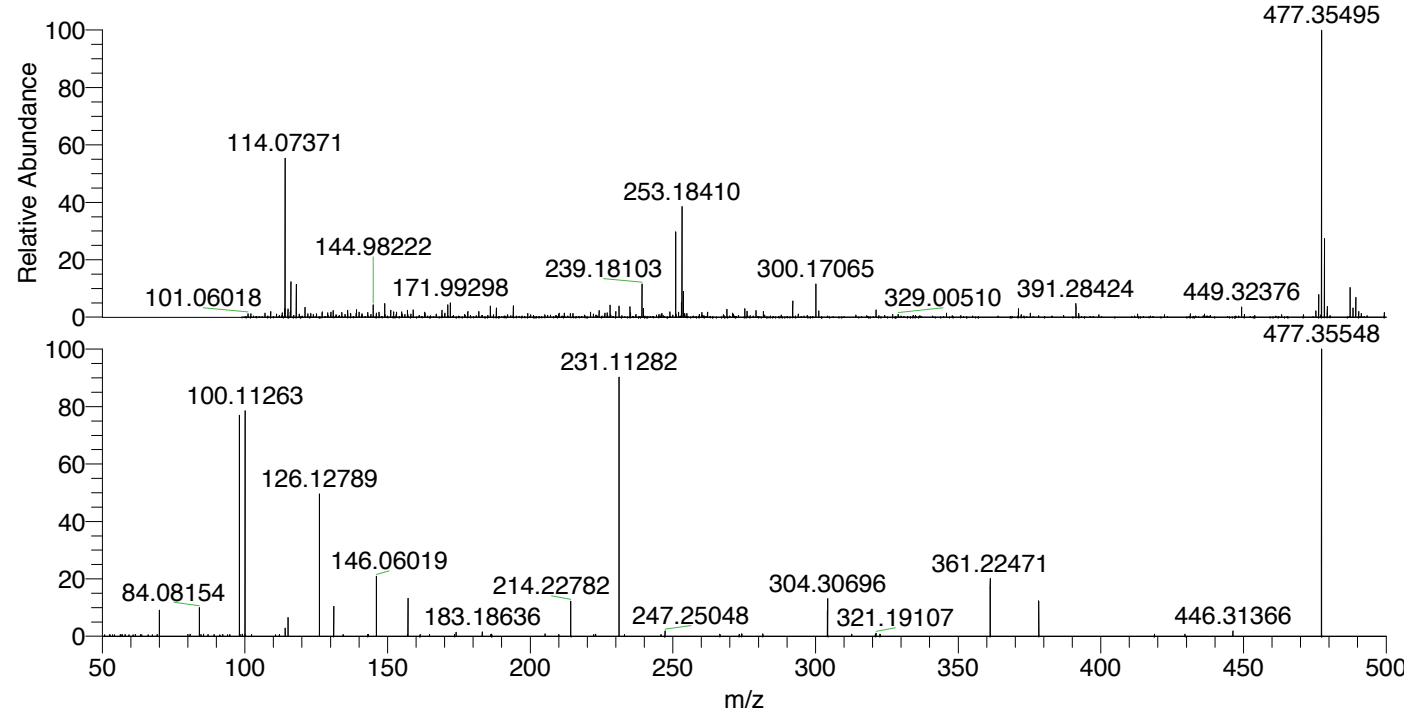
NL: 2.14E5
 Base Peak m/z= 239.18037-239.18277 F:
 FTMS + p ESI Full ms [100.00-1500.00]
 MS Pbirulai

NL: 2.03E5
 Base Peak m/z= 50.00000-1500.00000 F:
 FTMS + p ESI d Full ms2
 477.32@hcd35.00 [50.00-505.00] MS
 Pbirulai

Pbirulai#3227-3248 RT: 8.08-8.14 AV: 5

F: FTMS + p ESI d Full ms2 477.32 ...
 m/z= 50.00000-1000.00000

m/z	Intensity	Relative
63.38921	869.4	0.64
69.22033	889.0	0.66
70.06591	12370.0	9.16
80.77796	913.4	0.68
84.08154	13892.9	10.29
85.46674	958.7	0.71
92.27961	794.1	0.59
94.73669	819.0	0.61
98.09096	1293.3	0.96
98.09704	103364.3	76.58
99.10044	981.2	0.73
99.95931	837.7	0.62
100.11263	108658.8	80.50
102.33864	885.9	0.66
114.09180	3889.5	2.88
115.12354	8749.0	6.48
126.12789	67078.3	49.70
131.11824	14095.5	10.44
134.41985	801.5	0.59
143.11856	871.5	0.65
143.32186	845.9	0.63
146.06019	27959.6	20.71
157.01948	821.4	0.61
157.17013	17928.0	13.28
161.41056	890.8	0.66
164.75838	858.9	0.64
173.51221	807.9	0.60
174.05464	1867.3	1.38
183.18636	1950.7	1.45
186.53165	992.6	0.74
205.20392	1111.7	0.82
210.02252	856.9	0.63
214.22782	16788.6	12.44
222.23586	830.4	0.62
222.96127	933.4	0.69
231.11282	120561.0	89.32
233.06398	878.5	0.65
245.85622	820.5	0.61
247.25048	2402.7	1.78
266.52310	914.6	0.68
273.26324	806.7	0.60
274.15580	1062.5	0.79
281.55424	1052.1	0.78
304.16561	12354.2	9.15
304.30696	18152.8	13.45
312.68394	912.7	0.68
320.97620	952.9	0.71
321.19107	1477.5	1.09
322.62323	911.2	0.68
361.22471	26897.1	19.93
378.24958	16490.4	12.22
418.80329	990.3	0.73
429.50281	961.3	0.71
446.31366	2472.5	1.83
477.35548	134976.4	100.00



NL: 1.78E6
 Pbirulai#3235 RT: 8.10
 AV: 1 T: FTMS + p ESI
 Full lock ms
 [100.00-1500.00]

NL: 1.33E5
 Pbirulai#3224-3248 RT:
 8.08-8.14 AV: 5 F: FTMS
 + p ESI d Full ms2
 477.32@hcd35.00
 [50.00-505.00]

Pbirulai#3227-3248 RT: 8.08-8.14 AV: 5

F: FTMS + p ESI d Full ms2 477.32@hcd35.00 [50.00-505.00]

m/z= 50.00000-1000.00000

m/z	Intensity	Relative
50.86960	704.9	0.52
52.54934	693.4	0.51
52.71120	676.4	0.50
56.33225	789.3	0.58
56.54098	739.6	0.55
57.03909	791.3	0.59
58.06595	790.9	0.59
60.87723	697.8	0.52
61.58475	791.5	0.59
63.38921	869.4	0.64
63.85143	741.5	0.55
66.05374	748.1	0.55
67.59109	675.4	0.50
69.22033	889.0	0.66
70.06591	12370.0	9.16
79.97721	765.6	0.57
80.77796	913.4	0.68
84.08154	13892.9	10.29
84.59642	762.0	0.56
85.46674	958.7	0.71
87.09252	765.6	0.57
89.19651	764.4	0.57
91.20828	683.8	0.51
92.27961	794.1	0.59
93.94237	686.2	0.51
94.73669	819.0	0.61
98.09096	1293.3	0.96
98.09704	103364.3	76.58
98.30187	761.0	0.56
99.10044	981.2	0.73
99.95931	837.7	0.62
100.11263	108658.8	80.50
102.33864	885.9	0.66
110.73537	724.4	0.54
112.11354	778.6	0.58
114.09180	3889.5	2.88
115.12354	8749.0	6.48
126.12789	67078.3	49.70
131.11824	14095.5	10.44

Pbirulai#3227-3248 RT: 8.08-8.14 AV: 5

F: FTMS + p ESI d Full ms2 477.32@hcd35.00 [50.00-505.00]

m/z= 50.00000-1000.00000

m/z	Intensity	Relative
134.41985	801.5	0.59
143.11856	871.5	0.65
143.32186	845.9	0.63
146.06019	27959.6	20.71
157.01948	821.4	0.61
157.17013	17928.0	13.28
161.41056	890.8	0.66
164.75838	858.9	0.64
173.51221	807.9	0.60
174.05464	1867.3	1.38
183.18636	1950.7	1.45
186.12553	783.1	0.58
186.53165	992.6	0.74
205.20392	1111.7	0.82
210.02252	856.9	0.63
214.22782	16788.6	12.44
222.23586	830.4	0.62
222.96127	933.4	0.69
231.11282	120561.0	89.32
233.06398	878.5	0.65
245.85622	820.5	0.61
247.25048	2402.7	1.78
266.52310	914.6	0.68
273.26324	806.7	0.60
274.15580	1062.5	0.79
281.55424	1052.1	0.78
304.16561	12354.2	9.15
304.30696	18152.8	13.45
312.68394	912.7	0.68
320.97620	952.9	0.71
321.19107	1477.5	1.09
322.62323	911.2	0.68
361.22471	26897.1	19.93
378.24958	16490.4	12.22
418.80329	990.3	0.73
429.50281	961.3	0.71
446.31366	2472.5	1.83
477.35548	134976.4	100.00