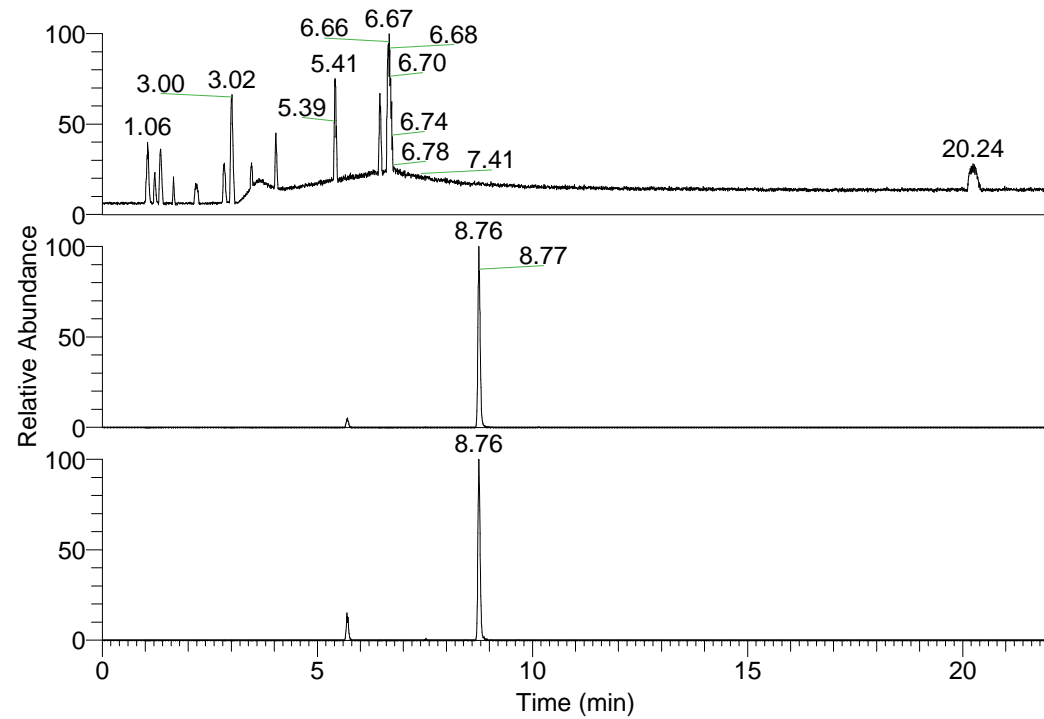


RT: 0.00 - 22.01



NL: 1.25E8
 Base Peak m/z=
 100.00000-1500.00000 F:
 FTMS + p ESI Full ms
 [100.00-1500.00] MS
 Pluctuosa_HDX

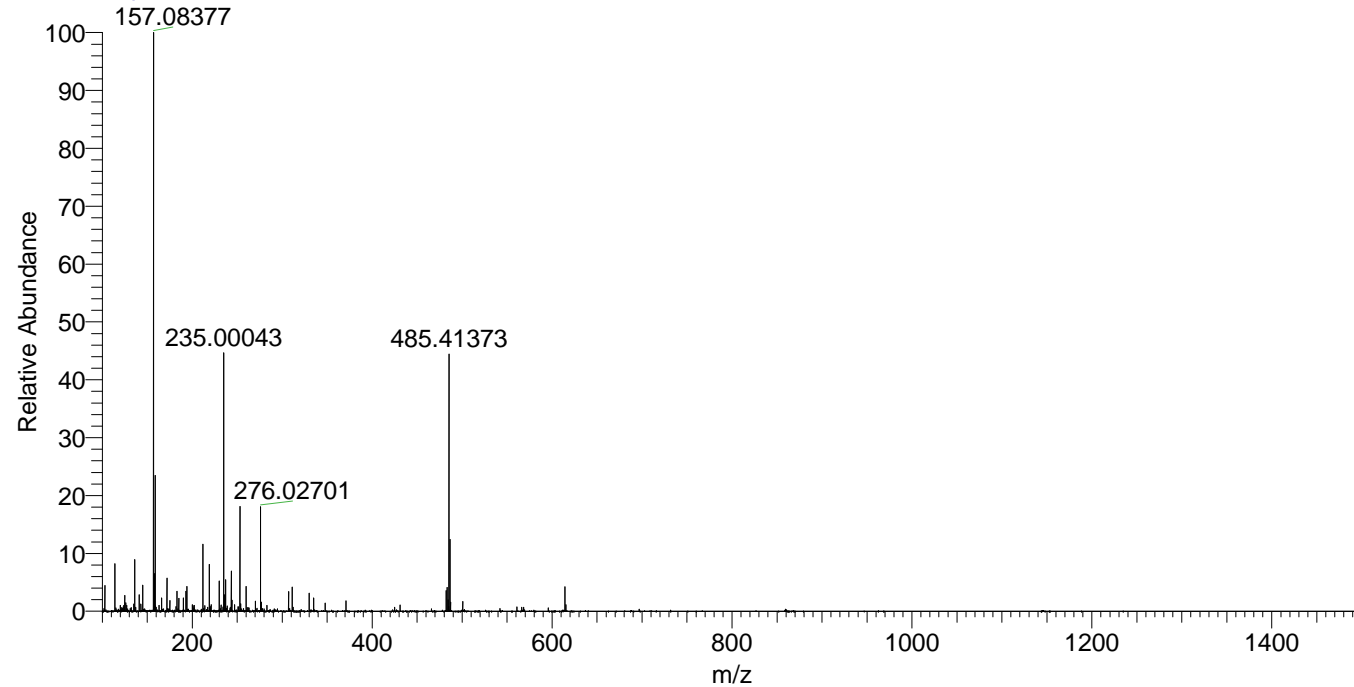
NL: 1.16E7
 Base Peak m/z=
 485.41124-485.41610 F:
 FTMS + p ESI Full ms
 [100.00-1500.00] MS
 Pluctuosa_HDX

NL: 1.77E6
 Base Peak m/z=
 243.71266-243.71510 F:
 FTMS + p ESI Full ms
 [100.00-1500.00] MS
 Pluctuosa_HDX

Pluctuosa_HDX#1414 RT: 8.76
 T: FTMS + p ESI Full ms [100.00-1500.00]
 m/z= 485.00000-486.00000

m/z	Intensity	Relative	Delta (ppm)	Composition
485.41373	9926203.0	100.00	1.26	C ₂₄ H ₃₃ ² H ₁₀ O ₂ N ₈
			-1.93	C ₂₄ H ₃₅ ² H ₉ O ₂ N ₈
			4.45	C ₂₄ H ₃₁ ² H ₁₁ O ₂ N ₈

Pluctuosa_HDX #1414 RT: 8.76 AV: 1 NL: 2.15E7
 T: FTMS + p ESI Full ms [100.00-1500.00]



Pluctuosa_HDX #1414 RT: 8.76 AV: 1 NL: 9.57E6
 T: FTMS + p ESI Full ms [100.00-1500.00]

