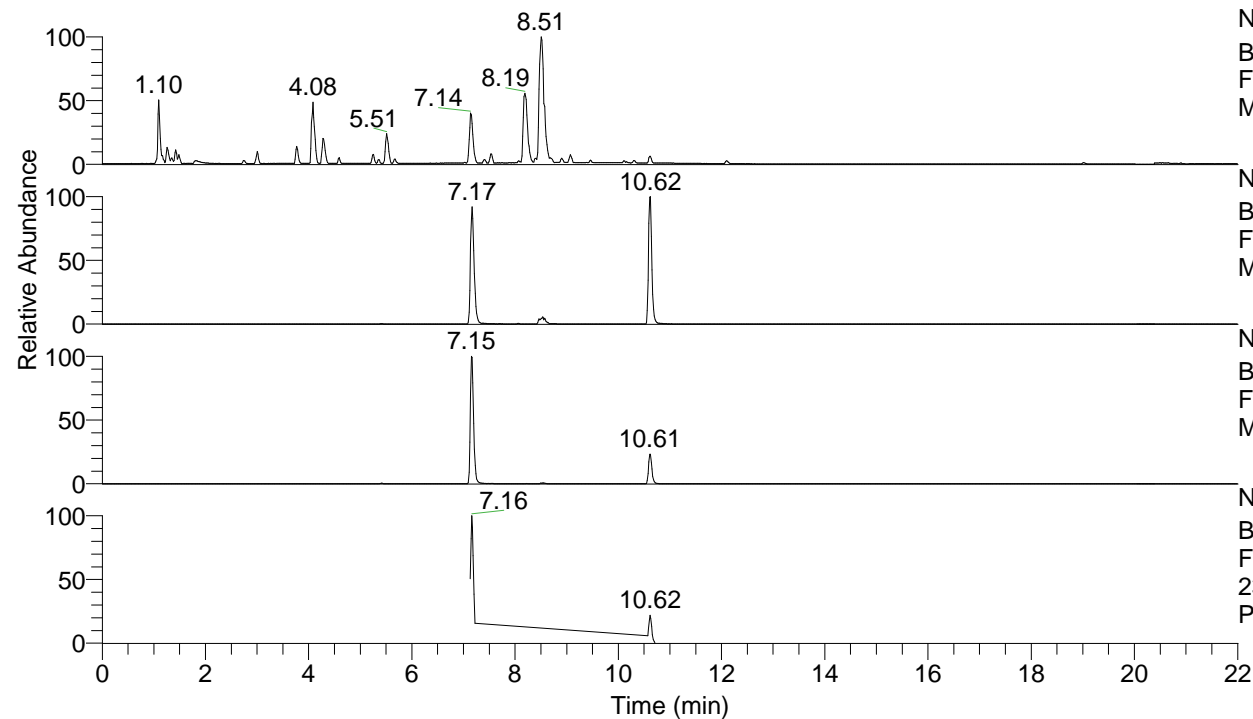


RT: 0.00 - 22.01



NL: 7.88E7  
 Base Peak m/z= 100.00000-1500.00000 F:  
 FTMS + p ESI Full ms [100.00-1500.00]  
 MS Pbirulai

NL: 5.08E6  
 Base Peak m/z= 475.34852-475.35328 F:  
 FTMS + p ESI Full ms [100.00-1500.00]  
 MS Pbirulai

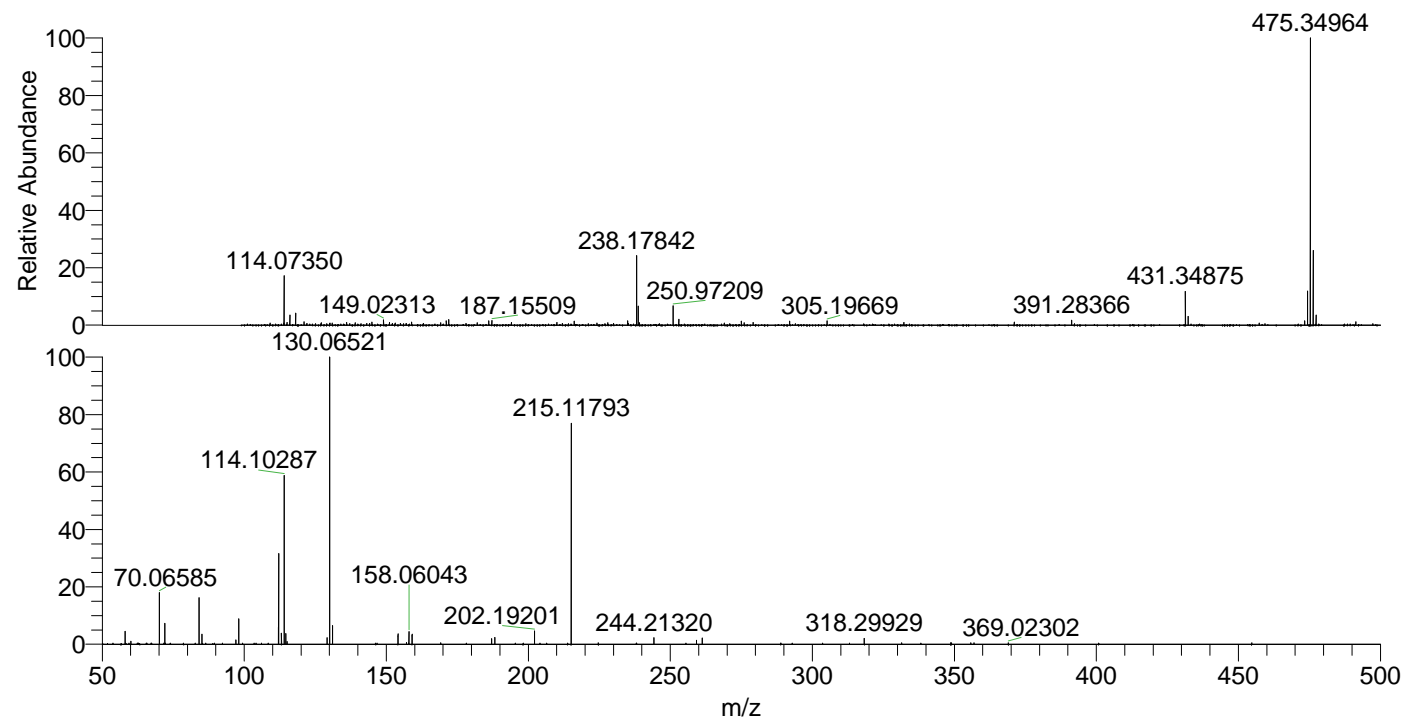
NL: 5.58E6  
 Base Peak m/z= 238.17817-238.18055 F:  
 FTMS + p ESI Full ms [100.00-1500.00]  
 MS Pbirulai

NL: 9.14E5  
 Base Peak m/z= 50.00000-1500.00000 F:  
 FTMS + p ESI d Full ms2  
 238.18@hcd35.00 [50.00-505.00] MS  
 Pbirulai

Pbirulai#4230-4257 RT: 10.57-10.64

F: FTMS + p ESI d Full ms2 238.18 ...  
 m/z= 50.00000-1000.00000

m/z	Intensity	Relative
58.06591	5402.3	4.19
60.05648	1292.9	1.00
70.06585	23372.7	18.12
72.08155	8805.7	6.83
84.08138	21248.0	16.47
85.07665	4112.8	3.19
97.07647	1861.9	1.44
98.09706	11102.4	8.61
112.08739	7245.1	5.62
112.11246	39653.0	30.74
113.10772	4625.8	3.59
114.10286	73337.2	56.86
114.61313	4363.9	3.38
115.12351	1176.3	0.91
129.13892	2699.6	2.09
130.06523	128987.6	100.00
131.11817	7696.4	5.97
131.12930	766.2	0.59
154.13410	4258.7	3.30
157.14452	698.5	0.54
158.06047	5330.1	4.13
159.09194	4152.0	3.22
187.08698	2295.2	1.78
188.18755	2886.9	2.24
202.19205	5452.1	4.23
215.11789	97913.9	75.91
244.21319	2672.4	2.07
259.25016	1691.4	1.31
261.24033	3282.7	2.54
318.29933	2448.8	1.90
348.77792	738.3	0.57



NL: 5.03E6  
 Pbirulai#4249 RT: 10.62  
 AV: 1 T: FTMS + p ESI  
 Full lock ms  
 [100.00-1500.00]

NL: 1.42E5  
 Pbirulai#4231-4262 RT:  
 10.58-10.64 AV: 5 F:  
 FTMS + p ESI d Full ms2  
 238.18@hcd35.00  
 [50.00-505.00]