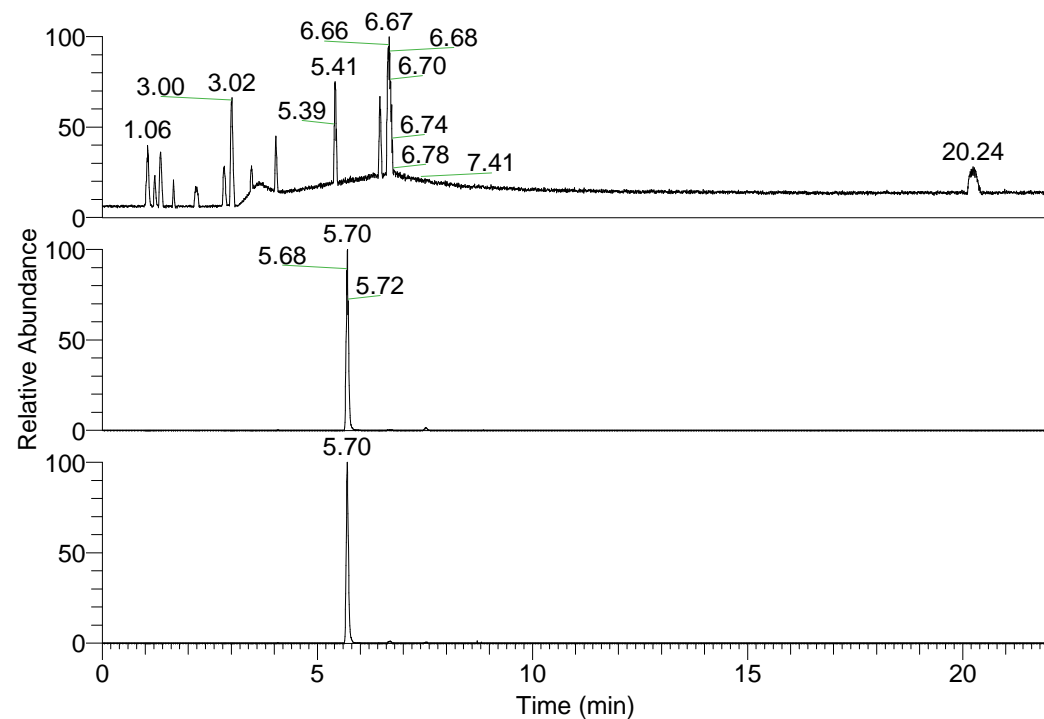


RT: 0.00 - 22.01



NL: 1.25E8
 Base Peak m/z=
 100.00000-1500.00000 F:
 FTMS + p ESI Full ms
 [100.00-1500.00] MS
 Pluctuosa_HDX

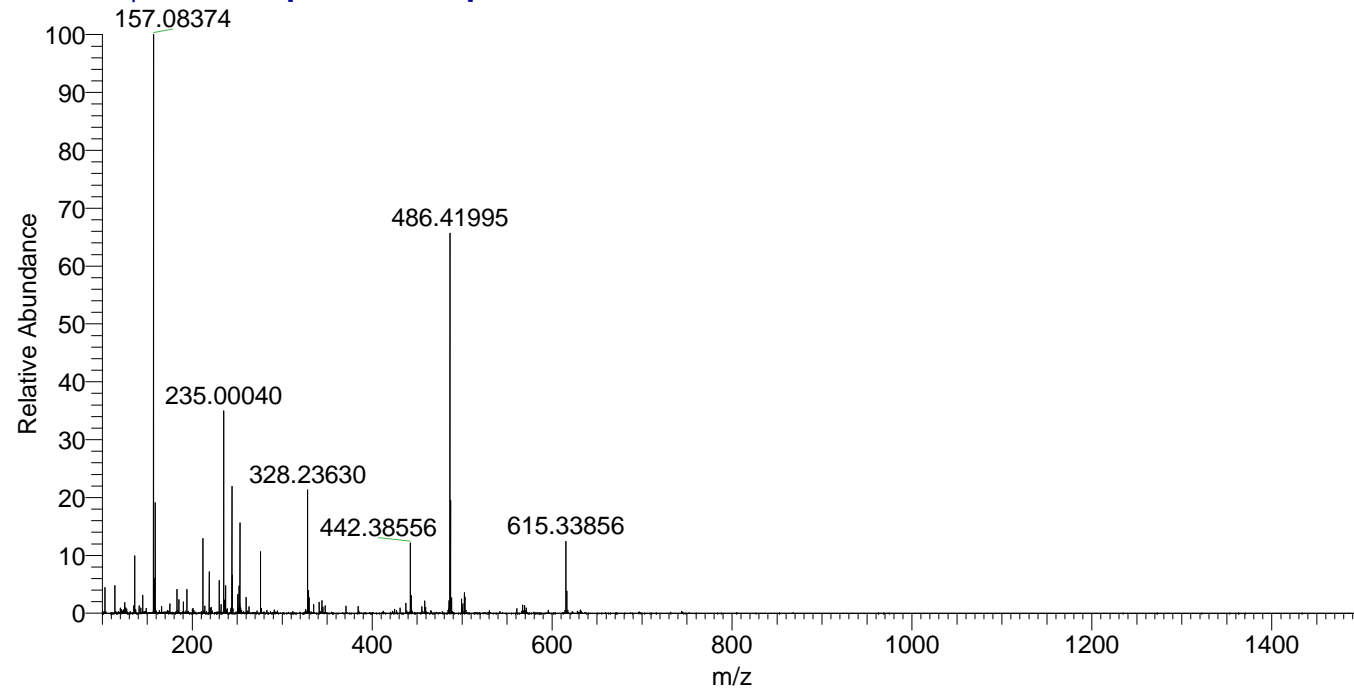
NL: 1.82E7
 Base Peak m/z=
 486.41751-486.42237 F:
 FTMS + p ESI Full ms
 [100.00-1500.00] MS
 Pluctuosa_HDX

NL: 6.36E6
 Base Peak m/z=
 244.21580-244.21824 F:
 FTMS + p ESI Full ms
 [100.00-1500.00] MS
 Pluctuosa_HDX

Pluctuosa_HDX#904 RT: 5.70
 T: FTMS + p ESI Full ms [100.00-1500.00]
 m/z= 486.00000-487.00000

m/z	Intensity	Relative	Delta (ppm)	Composition
486.41995	18173522.0	100.00	1.15	C ₂₄ H ₃₂ ² H ₁₁ O ₂ N ₈
			-2.03	C ₂₄ H ₃₄ ² H ₁₀ O ₂ N ₈
			4.33	C ₂₄ H ₃₀ ² H ₁₂ O ₂ N ₈

Pluctuosa_HDX #904 RT: 5.70 AV: 1 NL: 2.65E7
 T: FTMS + p ESI Full ms [100.00-1500.00]



Pluctuosa_HDX #904 RT: 5.70 AV: 1 NL: 1.74E7
 T: FTMS + p ESI Full ms [100.00-1500.00]

