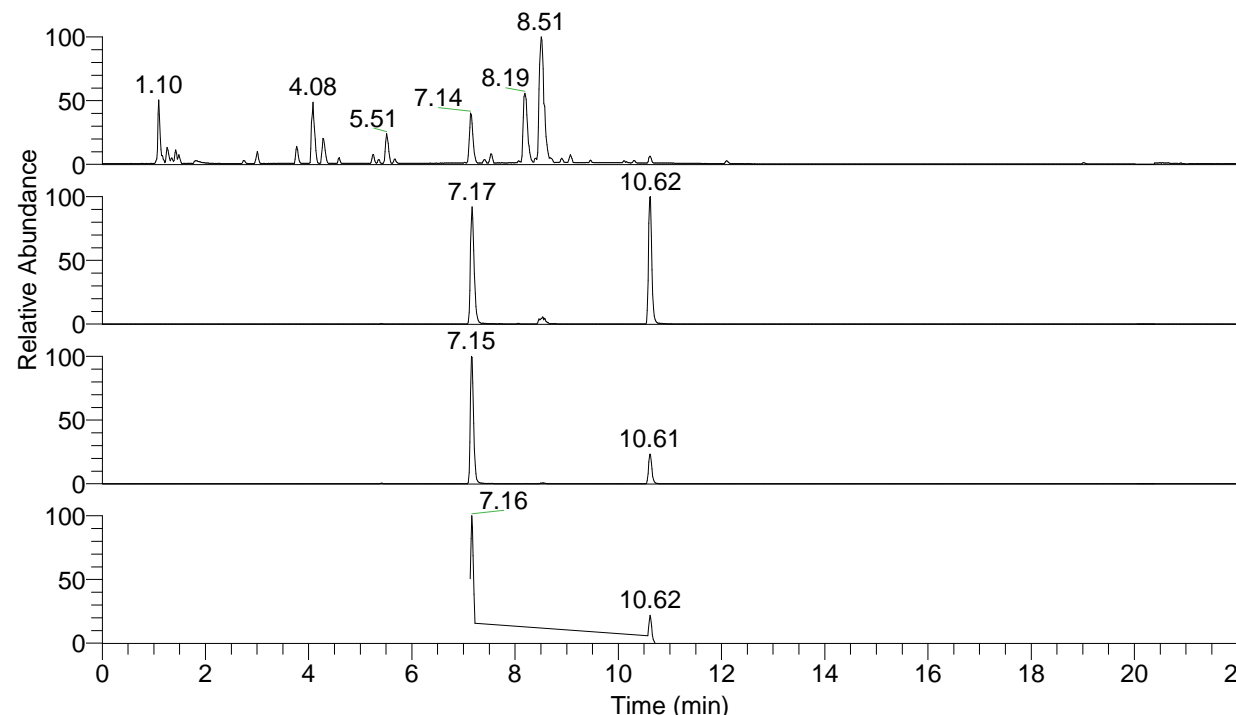


RT: 0.00 - 22.01



NL: 7.88E7
 Base Peak m/z= 100.00000-1500.00000 F:
 FTMS + p ESI Full ms [100.00-1500.00]
 MS Pbirulai

NL: 5.08E6
 Base Peak m/z= 475.34852-475.35328 F:
 FTMS + p ESI Full ms [100.00-1500.00]
 MS Pbirulai

NL: 5.58E6
 Base Peak m/z= 238.17817-238.18055 F:
 FTMS + p ESI Full ms [100.00-1500.00]
 MS Pbirulai

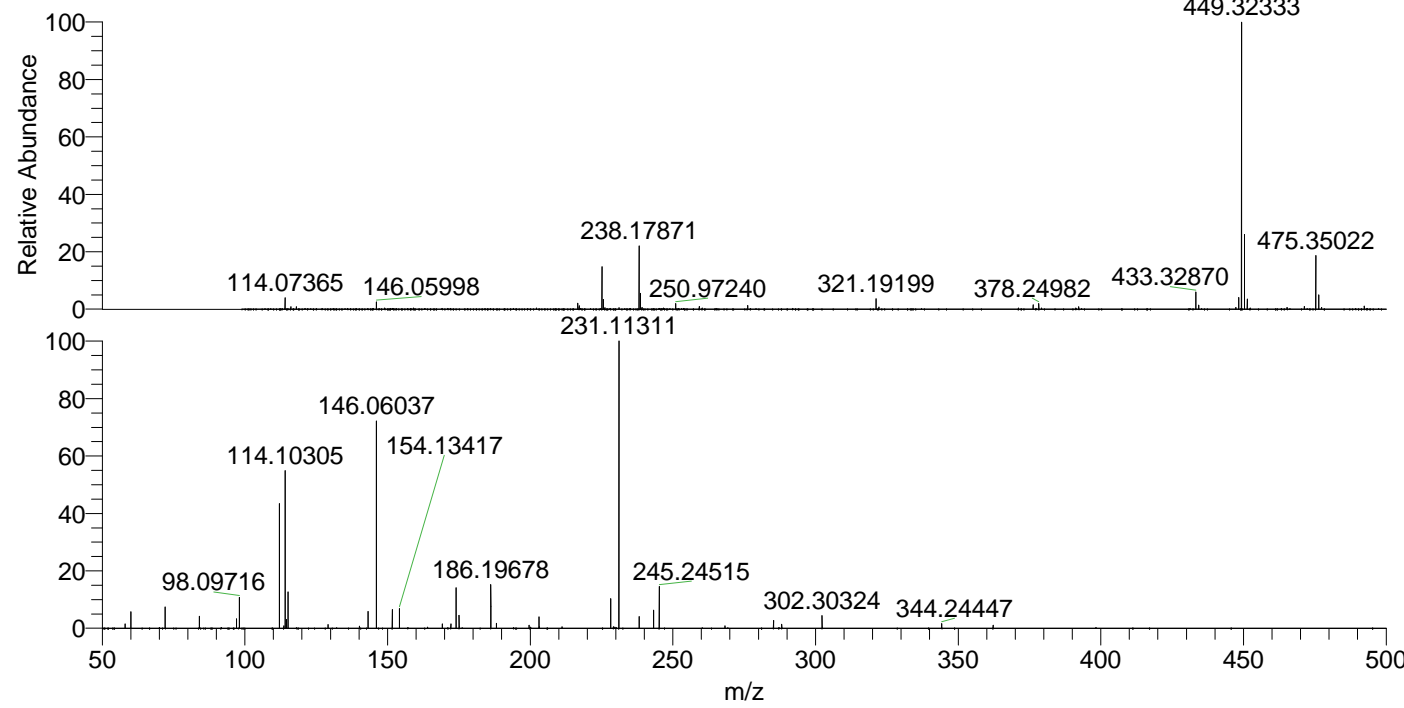
NL: 9.14E5
 Base Peak m/z= 50.00000-1500.00000 F:
 FTMS + p ESI d Full ms2
 238.18@hcd35.00 [50.00-505.00] MS
 Pbirulai

Pbirulai#2848-2877 RT: 7.13-7.20 AV: 6

F: FTMS + p ESI d Full ms2 238.18 ...

m/z= 50.00000-1000.00000

m/z	Intensity	Relative
58.06600	9483.5	1.54
60.05656	35251.7	5.72
72.08169	45900.0	7.44
84.08151	26108.0	4.23
97.07673	20550.0	3.33
98.09716	67212.3	10.90
112.11267	268158.0	43.48
113.61796	5243.7	0.85
114.10305	340440.8	55.20
114.61332	18562.4	3.01
115.12355	78286.3	12.69
129.13897	8245.4	1.34
140.11834	4360.2	0.71
143.14212	37589.3	6.09
146.06037	448931.4	72.79
151.65523	40508.3	6.57
154.13417	42159.4	6.84
169.16998	9122.6	1.48
172.18131	9241.9	1.50
174.05513	86887.2	14.09
175.08692	28867.3	4.68
186.19678	94008.4	15.24
188.18714	11098.8	1.80
199.64967	6254.6	1.01
203.08233	25308.4	4.10
203.22316	3101.9	0.50
211.19202	3392.1	0.55
228.21871	65559.7	10.63
229.17346	3213.4	0.52
231.11311	616737.0	100.00
238.17968	25455.4	4.13
243.25477	39476.1	6.40
245.24515	89900.5	14.58
268.24980	5046.8	0.82
285.27631	17354.9	2.81
288.17131	8872.3	1.44
302.30324	27959.7	4.53
344.24447	10214.8	1.66
362.25532	6535.0	1.06



NL: 2.44E7
 Pbirulai#2863 RT: 7.17
 AV: 1 T: FTMS + p ESI
 Full ms [100.00-1500.00]

NL: 6.17E5
 Pbirulai#2846-2880 RT:
 7.13-7.20 AV: 6 F: FTMS
 + p ESI d Full ms2
 238.18@hcd35.00
 [50.00-505.00]