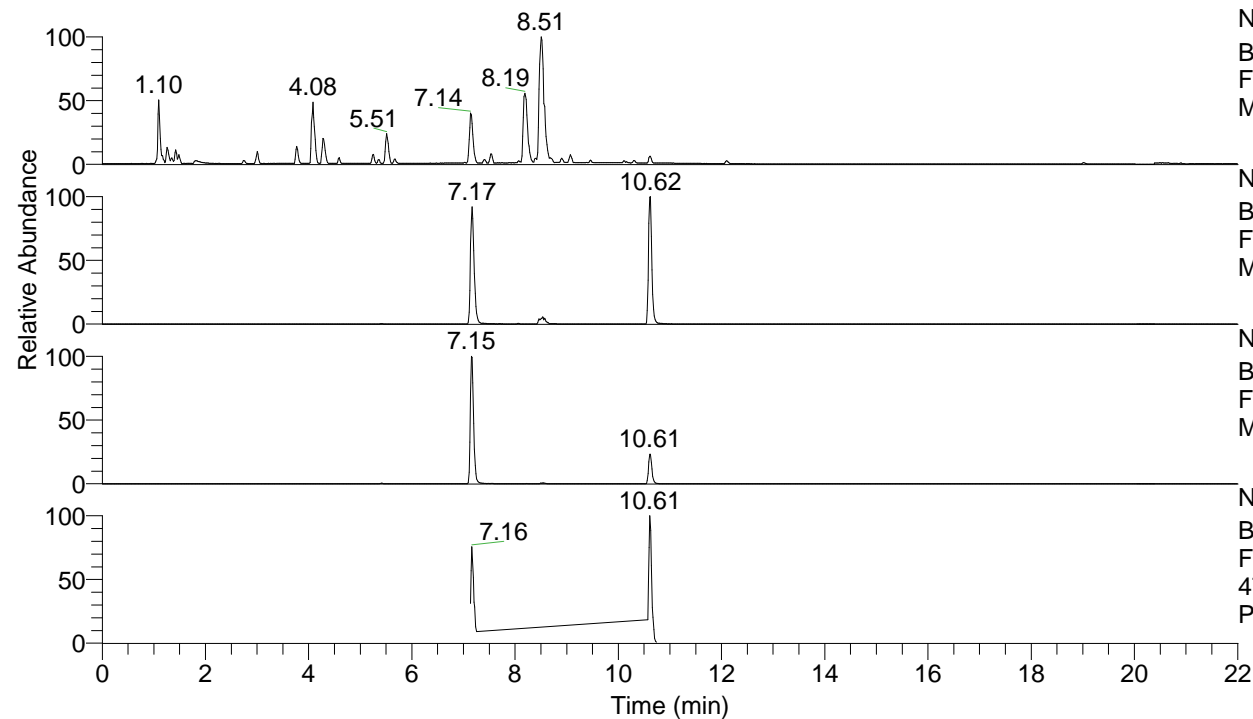


RT: 0.00 - 22.01



NL: 7.88E7
 Base Peak m/z= 100.00000-1500.00000 F:
 FTMS + p ESI Full ms [100.00-1500.00]
 MS Pbirulai

NL: 5.08E6
 Base Peak m/z= 475.34852-475.35328 F:
 FTMS + p ESI Full ms [100.00-1500.00]
 MS Pbirulai

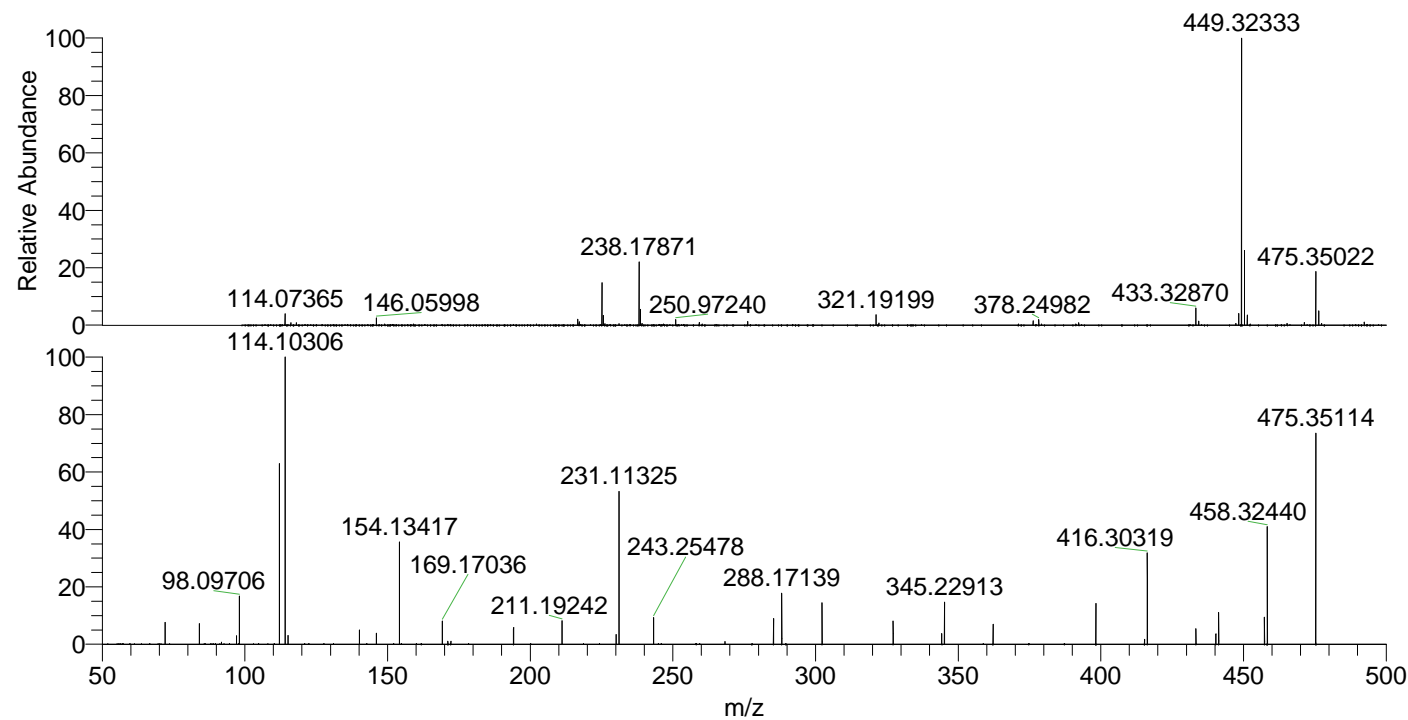
NL: 5.58E6
 Base Peak m/z= 238.17817-238.18055 F:
 FTMS + p ESI Full ms [100.00-1500.00]
 MS Pbirulai

NL: 5.71E5
 Base Peak m/z= 50.00000-1500.00000 F:
 FTMS + p ESI d Full ms2
 475.35@hcd35.00 [50.00-505.00] MS
 Pbirulai

Pbirulai#2849-2878 RT: 7.13-7.20 AV: 6

F: FTMS + p ESI d Full ms2 475.35 ...
 m/z= 50.00000-1000.00000

m/z	Intensity	Relative
72.08161	22383.4	7.92
84.08156	20350.7	7.20
91.75279	1980.4	0.70
97.07672	8349.7	2.95
98.09706	49055.8	17.36
112.11262	179835.6	63.63
114.10306	282610.0	100.00
114.11078	4641.7	1.64
115.12362	8682.4	3.07
140.11851	14387.6	5.09
146.06058	10957.6	3.88
154.13417	100880.8	35.70
169.17036	22972.2	8.13
171.16055	2902.4	1.03
172.18125	2939.7	1.04
194.16594	16701.3	5.91
211.19242	23189.8	8.21
230.12942	9718.4	3.44
231.11325	150607.6	53.29
243.25478	26494.6	9.37
268.25137	2822.7	1.00
285.27672	25760.4	9.12
288.17139	50834.3	17.99
302.30300	41226.9	14.59
327.21860	22720.3	8.04
344.24498	10500.0	3.72
345.22913	41323.6	14.62
362.25502	20401.9	7.22
398.29231	41205.5	14.58
415.31872	5003.1	1.77
416.30319	90710.0	32.10
433.32988	15268.8	5.40
440.31472	10580.1	3.74
441.29844	32027.3	11.33
457.34116	27194.6	9.62
458.32440	119563.4	42.31
475.35114	209560.0	74.15



NL: 2.44E7
 Pbirulai#2863 RT: 7.17
 AV: 1 T: FTMS + p ESI
 Full ms [100.00-1500.00]

NL: 2.82E5
 Pbirulai#2849-2880 RT:
 7.13-7.20 AV: 6 F: FTMS
 + p ESI d Full ms2
 475.35@hcd35.00
 [50.00-505.00]