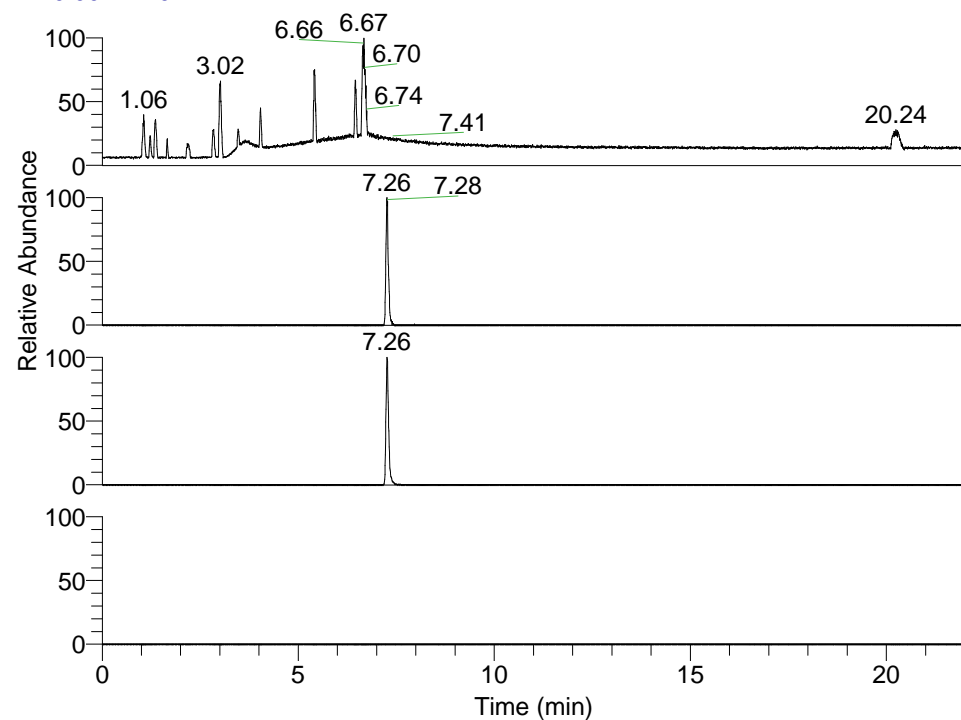


RT: 0.00 - 22.01



NL: 1.25E8  
 Base Peak m/z=  
 100.00000-1500.00000 F: FTMS + p  
 ESI Full ms [100.00-1500.00] MS  
 Pluctuosa\_HDX

NL: 4.26E5  
 Base Peak m/z=  
 478.42578-478.43056 F: FTMS + p  
 ESI Full ms [100.00-1500.00] MS  
 Pluctuosa\_HDX

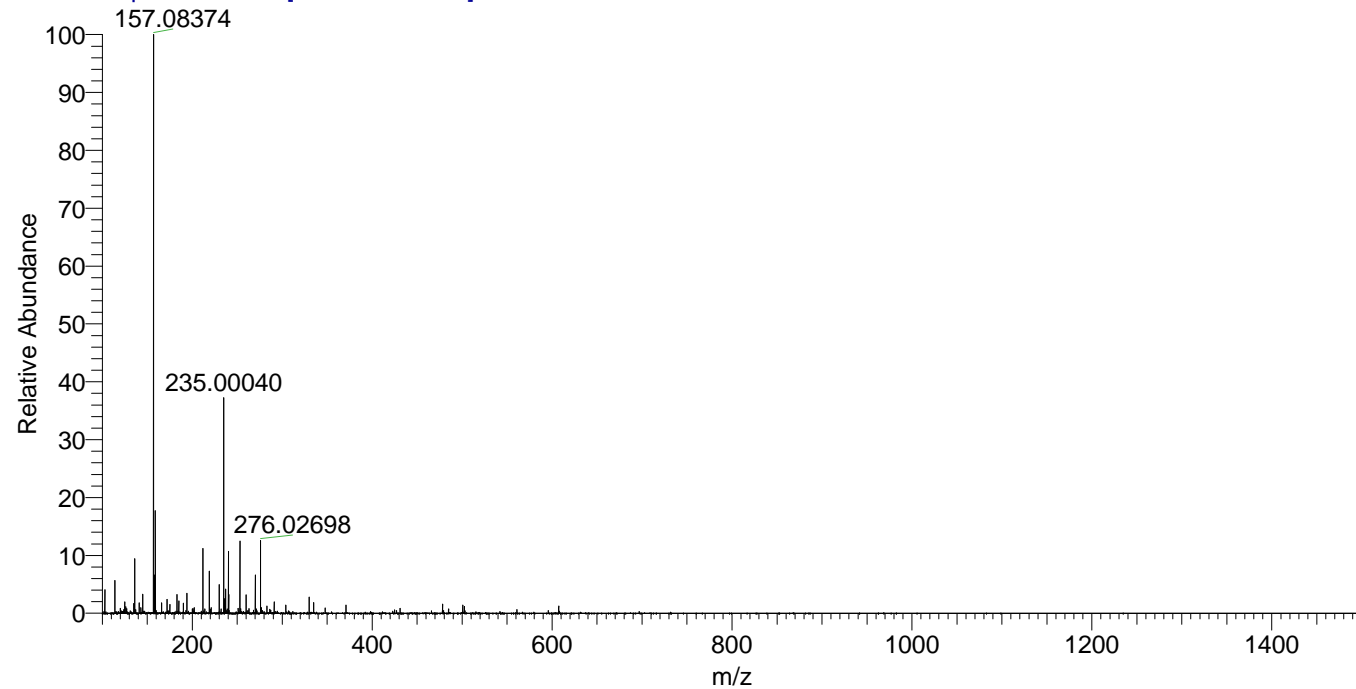
NL: 2.99E6  
 Base Peak m/z=  
 240.21994-240.22234 F: FTMS + p  
 ESI Full ms [100.00-1500.00] MS  
 Pluctuosa\_HDX

NL: 0  
 Base Peak m/z=  
 593.42434-593.43028 F: FTMS + p  
 ESI Full ms [100.00-1500.00] MS  
 Pluctuosa\_HDX

Pluctuosa\_HDX#1168 RT: 7.26  
 T: FTMS + p ESI Full ms [100.00-1500.00]  
 m/z= 478.00000-479.00000

m/z	Intensity	Relative	Delta (ppm)	Composition
478.42825	426199.3	100.00	1.32	C <sub>27</sub> H <sub>44</sub> <sup>2</sup> H <sub>5</sub> O <sub>6</sub> N <sub>6</sub>
			-1.91	C <sub>27</sub> H <sub>46</sub> <sup>2</sup> H <sub>4</sub> O <sub>6</sub> N <sub>6</sub>
			4.56	C <sub>27</sub> H <sub>42</sub> <sup>2</sup> H <sub>6</sub> O <sub>6</sub> N <sub>6</sub>

Pluctuosa\_HDX #1168 RT: 7.26 AV: 1 NL: 2.68E7  
 T: FTMS + p ESI Full ms [100.00-1500.00]



Pluctuosa\_HDX #1168 RT: 7.26 AV: 1 NL: 4.19E5  
 T: FTMS + p ESI Full ms [100.00-1500.00]

