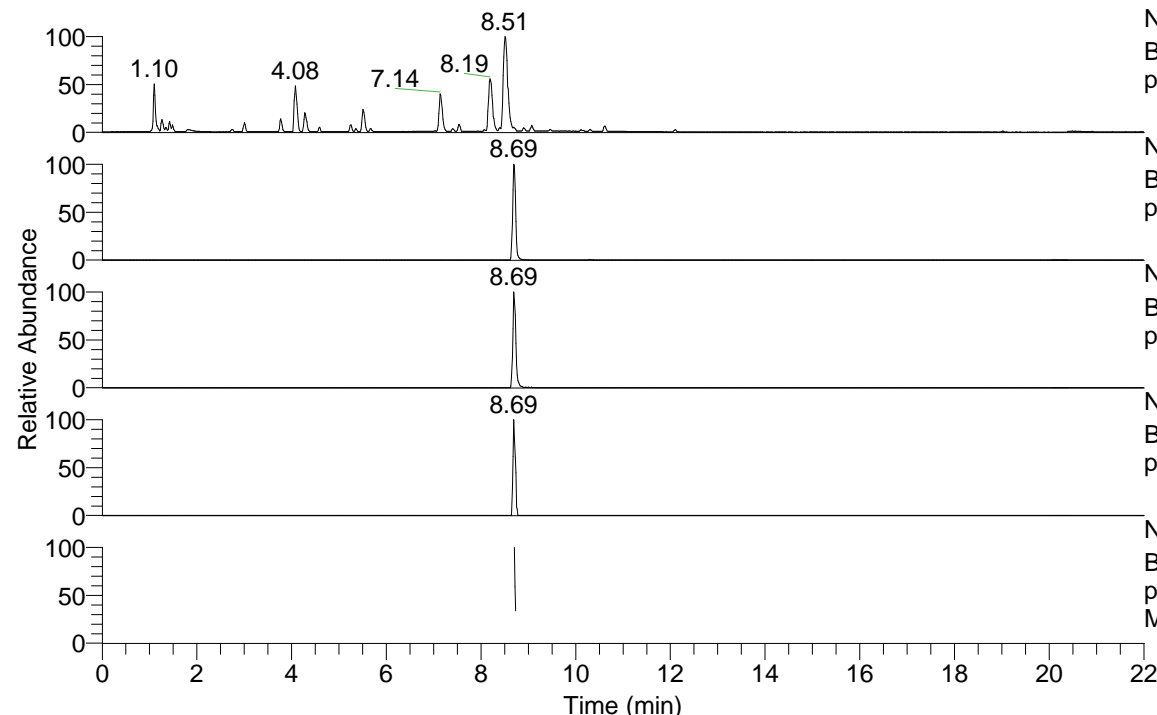


RT: 0.00 - 22.01



NL: 7.88E7
 Base Peak m/z= 100.00000-1500.00000 F: FTMS +
 p ESI Full ms [100.00-1500.00] MS Pbirulai

NL: 1.12E6
 Base Peak m/z= 473.39442-473.39916 F: FTMS +
 p ESI Full ms [100.00-1500.00] MS Pbirulai

NL: 5.46E5
 Base Peak m/z= 237.20112-237.20350 F: FTMS +
 p ESI Full ms [100.00-1500.00] MS Pbirulai

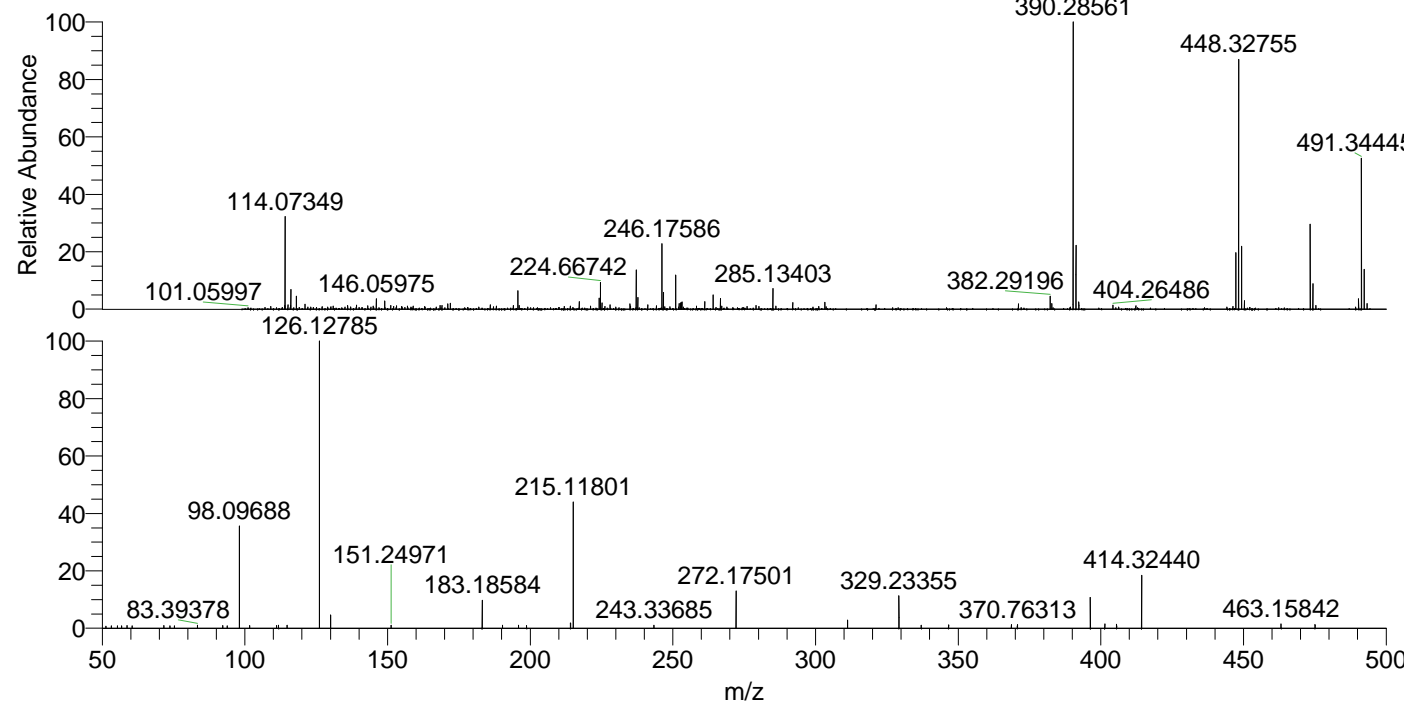
NL: 1.74E4
 Base Peak m/z= 587.38671-587.39259 F: FTMS +
 p ESI Full ms [100.00-1500.00] MS Pbirulai

NL: 2.25E5
 Base Peak m/z= 50.00000-1500.00000 F: FTMS +
 p ESI d Full ms2 473.40@hcd35.00 [50.00-500.00]
 MS Pbirulai

Pbirulai#3486-3498 RT: 8.70-8.73 AV: 3

F: FTMS + p ESI d Full ms2 473.40 ...
 m/z= 50.00000-1000.00000

m/z	Intensity	Relative
51.28050	1029.9	0.76
53.17111	1116.5	0.83
55.30674	1132.9	0.84
56.82638	1161.3	0.86
58.65724	1299.1	0.96
60.54197	1142.3	0.85
71.60573	1197.4	0.89
73.77527	1177.9	0.87
75.34110	1152.0	0.85
83.39378	1402.0	1.04
92.28618	1327.7	0.98
93.83588	1184.2	0.88
98.09688	48356.9	35.80
101.63212	1352.1	1.00
111.08755	1299.9	0.96
111.81313	1370.6	1.01
114.79968	1380.3	1.02
126.12785	135057.3	100.00
130.06507	6273.6	4.65
151.24971	1386.5	1.03
183.18584	13364.5	9.90
190.28335	1421.9	1.05
195.92656	1422.9	1.05
198.75386	1296.0	0.96
214.13480	2398.4	1.78
215.11801	58785.4	43.53
243.33685	1429.0	1.06
272.17501	17893.7	13.25
311.22147	3994.7	2.96
329.23355	15761.0	11.67
337.07143	1432.3	1.06
346.64691	1534.4	1.14
368.66208	1690.8	1.25
370.76313	1713.5	1.27
396.31221	14296.5	10.59
401.41536	1996.0	1.48
405.52342	1957.2	1.45
414.32440	25398.0	18.81
463.15842	1986.3	1.47
475.09249	1679.3	1.24



NL: 3.79E6
 Pbirulai#3481 RT: 8.69
 AV: 1 T: FTMS + p ESI
 Full lock ms
 [100.00-1500.00]

NL: 1.33E5
 Pbirulai#3472-3506 RT:
 8.70-8.73 AV: 3 F: FTMS
 + p ESI d Full ms2
 473.40@hcd35.00
 [50.00-500.00]