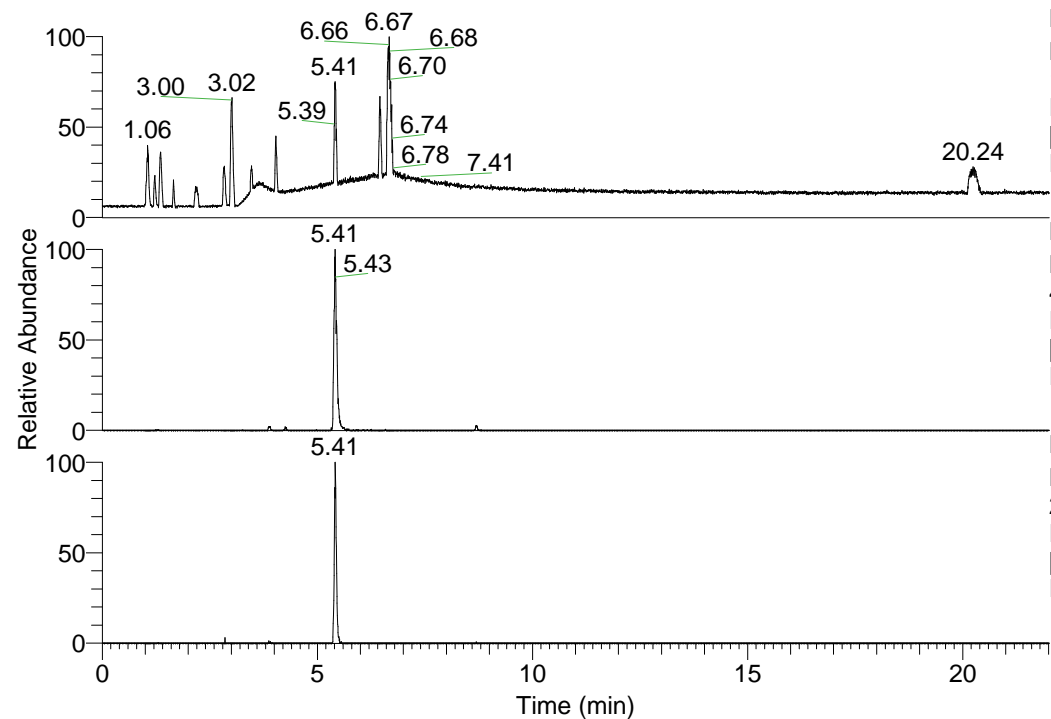


RT: 0.00 - 22.01



NL: 1.25E8
 Base Peak m/z=
 100.00000-1500.00000 F:
 FTMS + p ESI Full ms
 [100.00-1500.00] MS
 Pluctuosa_HDX

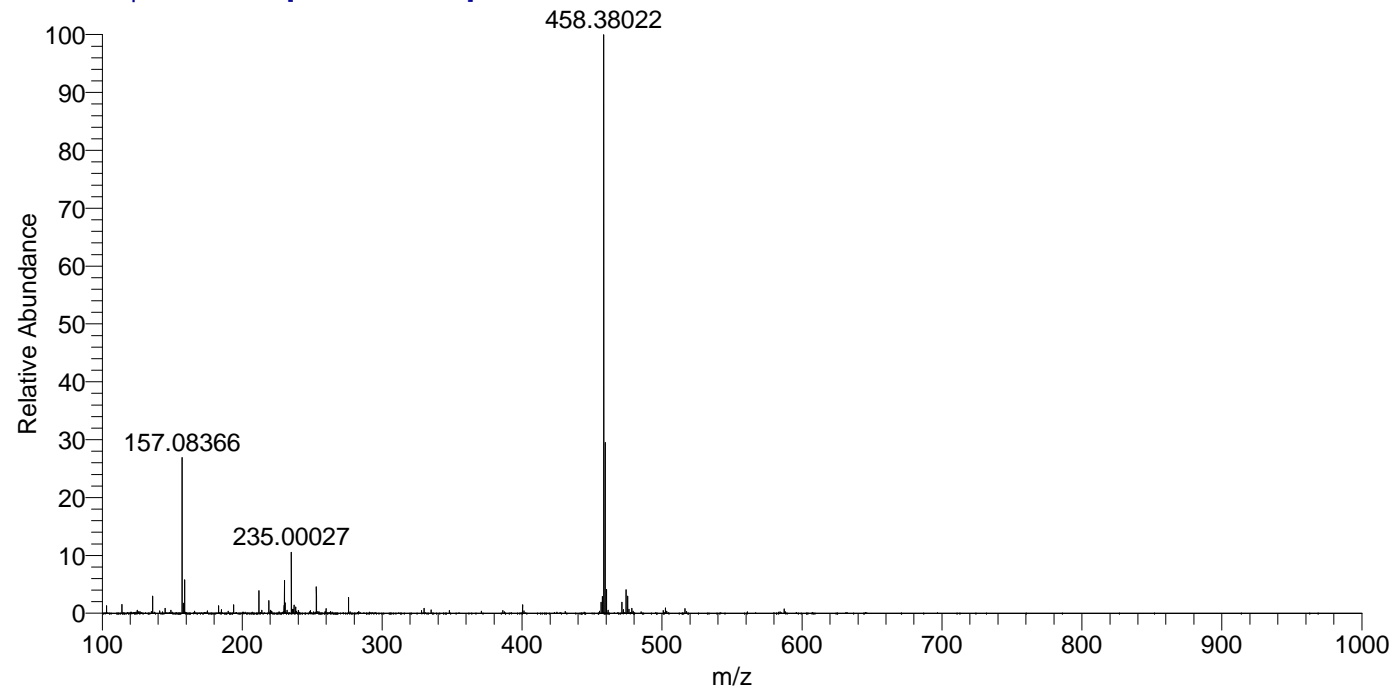
NL: 9.03E5
 Base Peak m/z=
 478.39021-478.39499 F:
 FTMS + p ESI Full ms
 [100.00-1500.00] MS
 Pluctuosa_HDX

NL: 5.22E5
 Base Peak m/z=
 240.20215-240.20455 F:
 FTMS + p ESI Full ms
 [100.00-1500.00] MS
 Pluctuosa_HDX

Pluctuosa_HDX#855 RT: 5.41
 T: FTMS + p ESI Full ms [100.00-1500.00]
 m/z = 478.00000-479.00000

m/z	Intensity	Relative	Delta (ppm)	Composition
478.39224	770064.5	100.00	0.41	C ₂₂ H ₃₂ ² H ₁₀ O ₄ N ₇
			-2.83	C ₂₂ H ₃₄ ² H ₉ O ₄ N ₇
			3.65	C ₂₂ H ₃₀ ² H ₁₁ O ₄ N ₇

Pluctuosa_HDX #855 RT: 5.41 AV: 1 NL: 8.71E7
 T: FTMS + p ESI Full ms [100.00-1500.00]



Pluctuosa_HDX #855 RT: 5.41 AV: 1 NL: 3.53E6
 T: FTMS + p ESI Full ms [100.00-1500.00]

